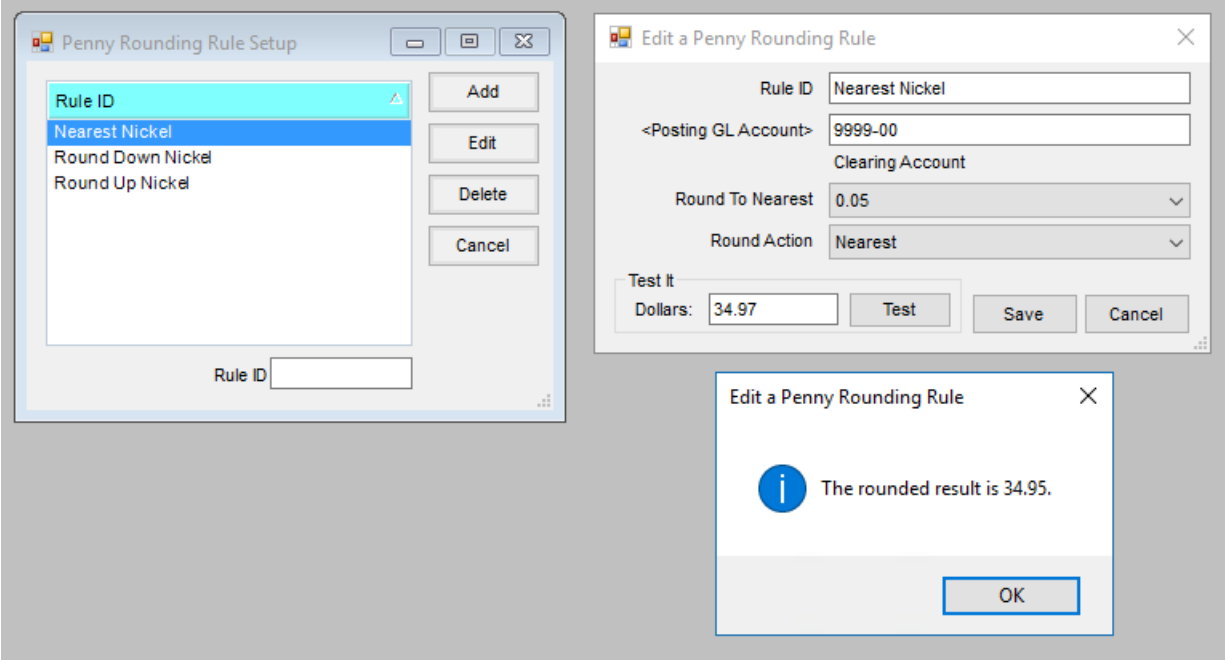


Penny Rounding Rules Setup

Last Modified on 06/22/2026 8:25 am CDT

Penny Rounding Rules are used to determine how and when to round cash-only Payment amounts.

These Rules are maintained at *Accounting / Setup / A/R / Penny Rounding Rules*. Entering an amount in the *Dollars* field and selecting **Test** provides the rounded result which is the amount the Customer would owe.



Once Rules are set up here, they can be set on the Location's *G/L Posting* tab and will be the default Rule used for *Payments on Accounts* and *Quick Tickets* (for cash-only Payments).