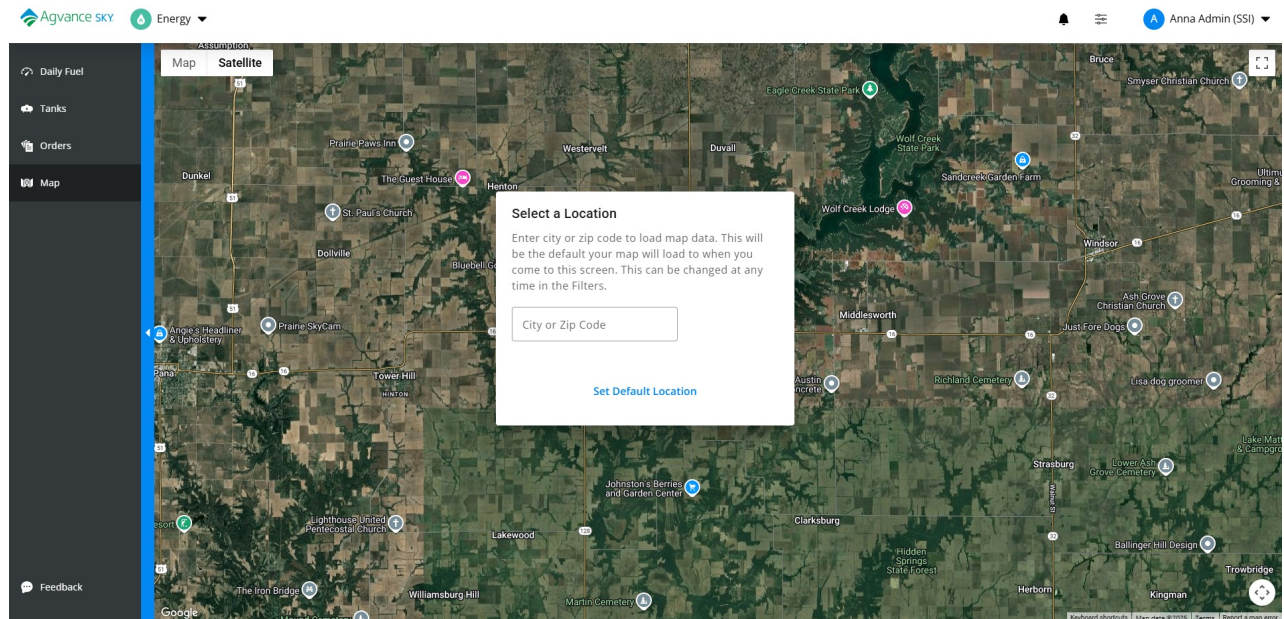



Map - SKY Energy



Last Modified on 12/08/2025 3:58 pm CST

A visual of all tanks is available in SKY Energy. Enter a *City or Zip Code* in the *Select a Location* window and select **Set Default Location** to load map data.



This is the default location the map loads to when opening the *Map* tab, but can be changed by selecting the **Filters** button. Additionally, filter the view based on *Delivery Types* and select **Apply Filters** to see the results on the map.



 **James McPherson** (774) 

General ▼

Map Default City or Zip Code

62565

Set Default Location

Delivery Types ▼

☒ All

☒ Calendar Days

☒ Scheduled

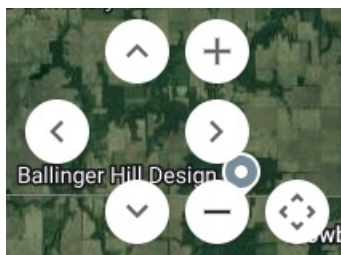
☒ Will Call

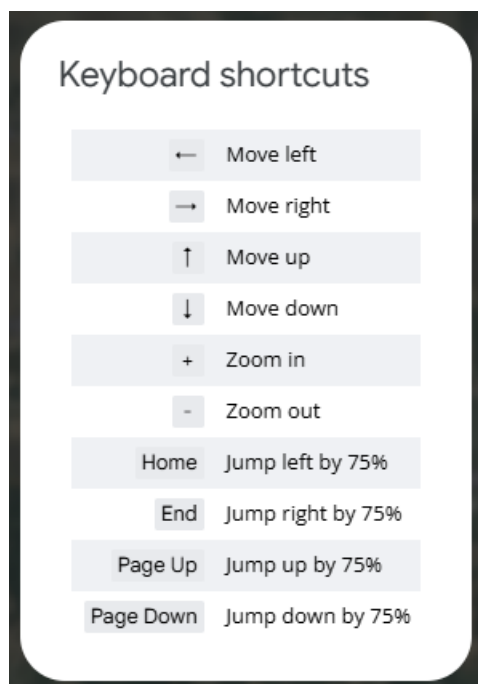
Apply Filters

Reset Filters

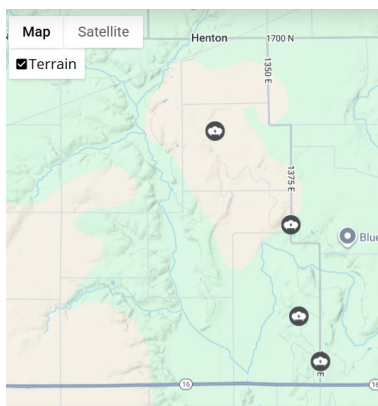
In the bottom right corner are *Map Camera Controls* and a link to view *Keyboard Shortcuts* for navigating the map by mouse or keyboard.

Note: Current markers stay and new are added when moving around the map and when zooming in or out.

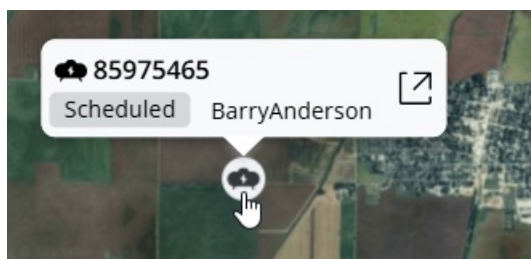




Optionally check *Labels* under *Satellite* to show imagery with street names on the map and *Terrain* under *Map* to incorporate a representation of the Earth's surface elevation, creating a more realistic and detailed view.



Select a **Tank** icon on the Energy Map to see a more detailed card with the tank *Serial Number*, *Delivery/Tank type*, and *Customer Name*. Select the detail card to redirect to the Tank Information page in a new browser tab.



- If multiple tanks exist at the same address, the tanks will show with a stack indicator showing how many have the same location. Expand the information panel to show details for each tank at the location.
- If multiple tanks exist at a location, the tank icon will have a number indicating how many are at that location.

Click the icon and scroll to view the additional tanks on the list.

