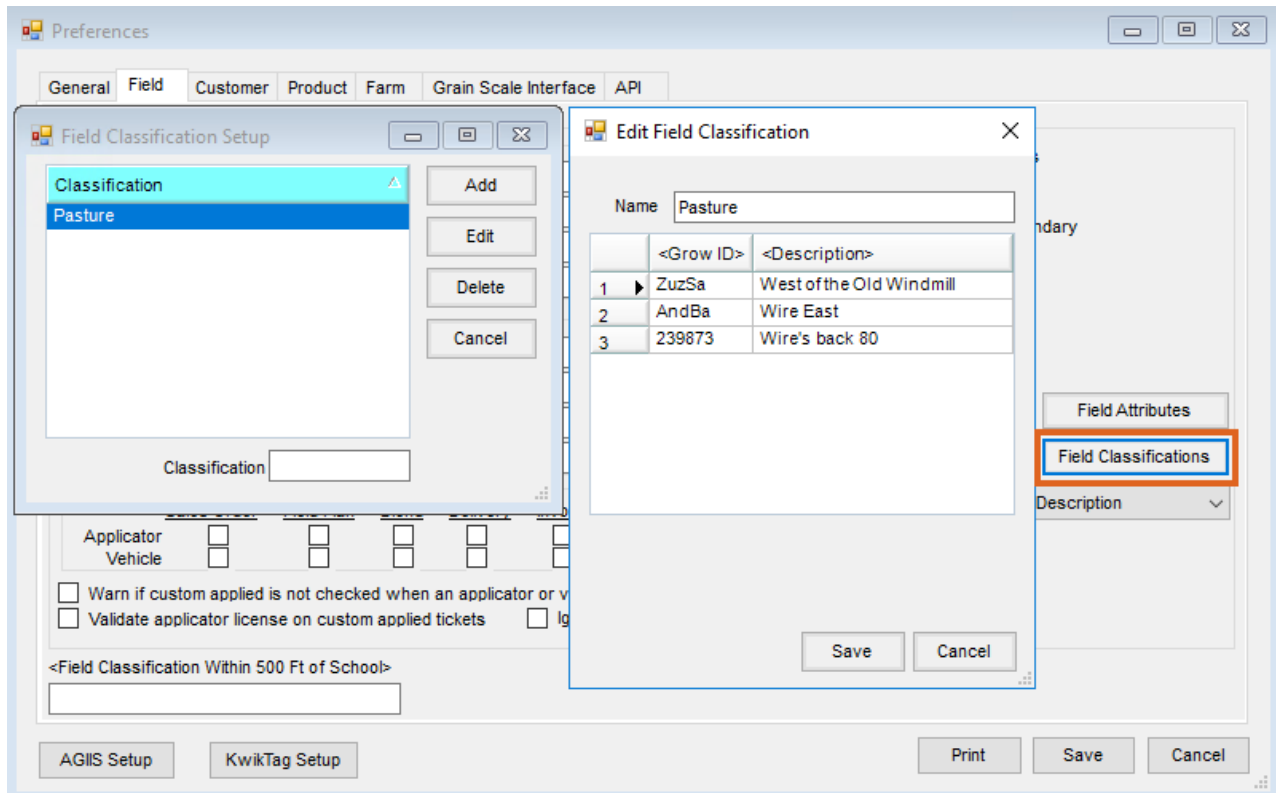


Field Classifications - SKY Mapping

Last Modified on 12/16/2024 10:21 am CST

Field Classifications give the ability to group Fields with a unique name. Classifications can then be used in SKY Mapping as a filtering tool in the *Fields* panel and in reports.

Field **Classifications** are set up in Agvance at *Hub / Setup / Company Preferences*. On the *Field* tab, select **Field Classifications**.



After adding the desired Classifications, go to SKY Mapping and navigate to the Field where the new Field Classification should be applied. Select the Ellipsis to the right of the Field name and choose Edit Field. SKY Mapping will zoom to the Field location and display the General Information panel.

Choose the *Classification* from the drop-down, then select **Save**.

North
Barry Anderson
252.04 acres

i General Information
General

* Field Name: North

Farm Name Certified Organic

Irrigated Drainage Tile

Field Classification

Advance Billable Area:
252.041

Directions

Field Notes