

Kentucky Motor Fuel

Last Modified on 08/19/2024 7:39 am CDT

General information regarding Motor Fuel can be found [here](#).

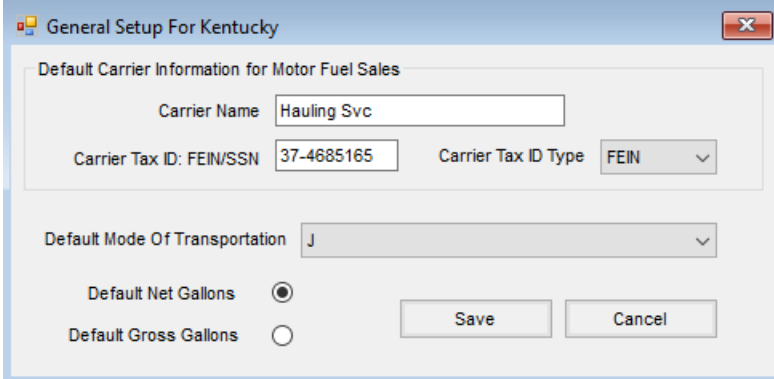
Modes of Transportation

- J - Truck
- R - Rail
- B - Barge
- S - Ship
- PL - Pipeline
- BA - Book Adjustment
- ST - Stationary Transfer

State of Kentucky Setup

General Setup for Kentucky

Set up the default information at *Motor Fuel / Setup / Setup Uniformity State Defaults*.

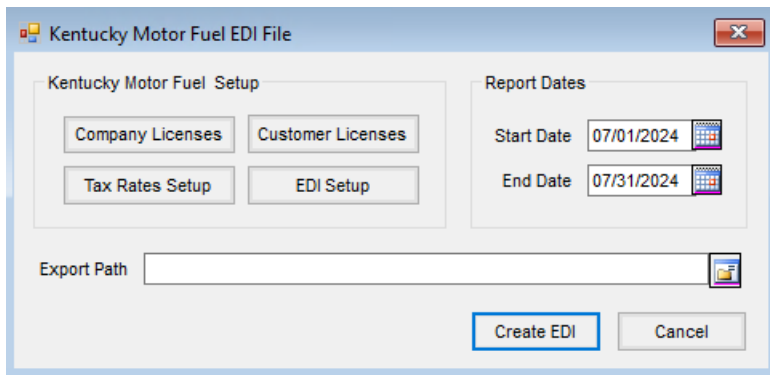


The screenshot shows a dialog box titled "General Setup For Kentucky". It contains the following fields and controls:

- Carrier Name:
- Carrier Tax ID: FEIN/SSN:
- Carrier Tax ID Type:
- Default Mode Of Transportation:
- Default Net Gallons:
- Default Gross Gallons:
- Buttons: Save, Cancel

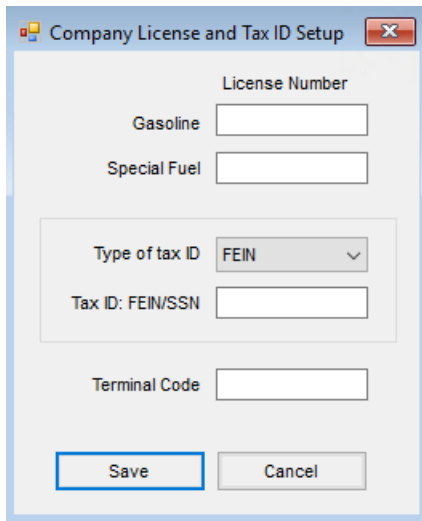
Kentucky Motor Fuel Setup

Setup specific to the state of Kentucky can be found at *Motor Fuel / Reports / Kentucky*.



Company Licenses

Choose **Company Licenses** to enter the *License Number* for *Gasoline* and *Special Fuel*, choose the *Type of tax ID* and enter the *Tax ID: FEIN/SSN*, and enter the *Terminal Code*.



Customer Licenses

Choose **Customer Licenses** to open the *Customer Licenses Setup* window. Double-click the *Customer Name* header to select a Customer then enter the *Customer License* number.

Customer Licenses Setup

	<Customer Name>	Customer License
1	Barry Anderson	
2	Larry Baker	
3	Abby Laken	

Save Cancel

Tax Rates Setup

Enter tax rate information for *Gasoline* and *Special Fuel*.

Kentucky Motor Fuel Tax Rates

	Gasoline	Special Fuel
Tax Rate, \$/gal	<input type="text"/>	<input type="text"/>
Non-highway Dealer Credits Rate, \$/gal (Schedule 10A, 10I, etc.)	<input type="text"/>	<input type="text"/>
Dealer Compensation Allowance Rate, \$/gal (filing on time)	<input type="text"/>	<input type="text"/>
Environmental Assurance Fee Rate, \$/gal	<input type="text"/>	<input type="text"/>

Save Cancel

EDI Setup

Choose **EDI Setup** to establish information about the business that will be transferred along with the tax reports filed using EDI. The fields will default to information entered during the initial Agvance setup.

Kentucky EDI Setup

Taxpayer's Name: Software Solutions Company

Taxpayer's Physical Address

Address 1: 123 Any Street
 Address 2:
 City: Hometown
 State: KY | Zip: | Country: US

Taxpayer's Mailing Address if different than physical

Name:
 Address 1:
 Address 2:
 City:
 State: | Zip: | Country:

General Contact Person Information

Name:
 Phone Number:
 Fax Number:
 E-Mail Address:

EDI Contact Person Information

Name:
 Phone Number:
 Fax Number:
 E-Mail Address:

Usage Indicator: Production Data | Acknowledgement Required

Original Return | No Activity Gasoline
 Supplemental Return | No Activity Special Fuel

Save **Cancel**

Schedule Types

Return	Tax Type	Schedule Type	Description
Gasoline	GD	1	Gallons received, tax paid
Gasoline	GD	2	Gallons received from licensed Motor Fuel distributor, tax unpaid
Gasoline	GD	2A	Gallons received from terminals, origin tax unpaid
Gasoline	GD	2B	Gallons received, tax unpaid blendable stock
Gasoline	GD	3	Gallons imported from another state, tax-free
Gasoline	GD	5D	Gallons sold, tax collected for import from
Gasoline	GD	6	Gallons delivered to licensed Motor Fuel distributors, tax not collected
Gasoline	GD	7	Gallons exported to the state of
Gasoline	GD	8	Gallons delivered to the US Government, tax-exempt
Gasoline	GD	10I	Gallons delivered, tax-exempt for farming
Special Fuel	SF	1	Gallons received, tax paid

Special Fuel	SF	2	Gallons received from licensed Motor Fuel distributor, tax unpaid
Special Fuel	SF	2A	Gallons received from terminals, origin tax unpaid
Special Fuel	SF	2B	Gallons received, tax unpaid blendable stock
Special Fuel	SF	3	Gallons imported from another state, tax-free
Special Fuel	SF	5D	Gallons sold, tax collected for import from
Special Fuel	SF	6	Gallons delivered to licensed Motor Fuel distributors, tax not collected
Special Fuel	SF	7	Gallons exported to the state of
Special Fuel	SF	8	Gallons delivered to the US Government, tax-exempt
Special Fuel	SF	9	Gallons delivered to state and local government, tax-exempt
Special Fuel	SF	10A	Gallons sold for non-highway use
Special Fuel	SF	10G	Gallons delivered to non-profit religious, charitable, or educational organizations
Special Fuel	SF	10I	Gallons delivered, tax-exempt for farming
Special Fuel	SF	10J	Gallons delivered, tax-exempt for residential heating
Special Fuel	SF	10Y	Gallons delivered, tax-exempt to railroads
Terminal Operator	TO	15A	Total receipts net gallons
Terminal Operator	TO	15B	Total disbursements net gallons
Liquefied Petroleum Gas	LP	5	Taxable gallons
Liquefied Petroleum Gas	LP	10	Tax-exempt gallons
Transporter	TR	14	Transporter's Delivery Schedule

Product Codes

Return	Product Group	Product Code	Description
Gasoline	GA	061	Natural Gasoline
Gasoline	GA	065	Gasoline
Gasoline	GA	071	Gasoline MTBE
Gasoline	GA	092	Undefined Products (Transmix)

Gasoline	GA	122	Blending Components
Gasoline	GA	123	Alcohol
Gasoline	GA	124	Gasohol
Gasoline	GA	125	Aviation Gasoline
Gasoline	GA	280	Marine Gas Oil
Gasoline	GA	E00	Ethanol (100%)
Gasoline	GA	E01-E99	Percentage of Ethanol
Gasoline	GA	M00	Methanol (100%)
Gasoline	GA	M01-M99	Percentage of Methanol
Special Fuel	SF	072	Kerosene - Dyed
Special Fuel	SF	073	Low Sulfur Kerosene - Dyed
Special Fuel	SF	074	High Sulfur Kerosene - Dyed
Special Fuel	SF	090	Additive Miscellaneous (Blending)
Special Fuel	SF	100	Transmix
Special Fuel	SF	142	Kerosene - Undyed
Special Fuel	SF	145	Low Sulfur Kerosene - Undyed
Special Fuel	SF	147	High Sulfur Kerosene - Undyed
Special Fuel	SF	150	No. 1 Fuel Oil - Undyed
Special Fuel	SF	152	Heating Oil
Special Fuel	SF	160	Diesel Fuel - Undyed
Special Fuel	SF	161	Low Sulfur Diesel #1 - Undyed
Special Fuel	SF	167	Low Sulfur Diesel #2 - Undyed
Special Fuel	SF	224	Compressed Natural Gas (CNG)
Special Fuel	SF	225	Liquid Natural Gas (LNG)
Special Fuel	SF	226	High Sulfur Diesel - Dyed
Special Fuel	SF	227	Low Sulfur Diesel - Dyed
Special Fuel	SF	228	Diesel Fuel - Dyed
Special Fuel	SF	231	No. 1 Fuel Oil - Dyed
Special Fuel	SF	279	Marine Diesel Oil
Special Fuel	SF	283	#2 High Sulfur Diesel - Undyed
Special Fuel	SF	B00	Biodiesel - Undyed (100%)
Special Fuel	SF	B01-B99	Percentage of Biodiesel - Undyed
Special Fuel	SF	D00	Biodiesel - Dyed (100%)
Special Fuel	SF	D01-D99	Percentage of Biodiesel - Dyed

Liquefied Petroleum Gas	LP	054	Propane
----------------------------	----	-----	---------