

# STLM Open Storage - Hold

Last Modified on 05/03/2023 10:38 am CDT

In STLM, changing the *Hold* status on an Open Storage Scale Ticket split line will cause the schedules to be replaced based on the Open Storage or Open Storage-Hold defaults that are set up. Only Open Storage split lines may be placed on Hold. When the *Hold* flag is turned on or off, any pre-existing storage/service charges will be removed along with the Charge Start Date override on the split line. Mass Edit utilities will follow this same logic. Any split lines marked as *Hold* will be excluded from the Reshrink and Lock Utilities.

## Rules

- **Adding a Scale Ticket in Grain or Transferring a Scale Ticket from Grain Scale Interface**
  - Adding a Scale Ticket uses the default schedules of *Open Storage - Hold* when *Hold* is checked.
    - *Hold* can only be checked when the DPR is *Open Storage*.
- **Grain Scale Interface**
  - On the Scale Ticket, dock and shrink will use the default schedules of *Open Storage - Hold* when *Hold* is checked.
- **Transferring a Scale Ticket from Grain Scale Interface**
  - Auto Transfer/Review and Transfer
    - Transferring a Scale Ticket will use the default schedule of *Open Storage - Hold* when *Hold* is checked
- **Editing a Scale Ticket to Check *Hold***
  - DPR must be *Open Storage*.
  - When *Hold* is checked, the Scale Ticket will use default schedules for *Open Storage - Hold*, clear out any pre-existing storage/service charges that have been accrued, and the *Charge Start Override Date* will be blank.
- **Editing a Scale Ticket to Uncheck *Hold***
  - The schedules will change to the default schedule of the disposition on the Scale Ticket.
  - Any pre-existing storage/service charges will be removed and the *Charge Start Override Date* will be blank.
  - When changing the DPR of a split line to something other than *Open Storage*, *Hold* will be unchecked.
- **Editing a Scale Ticket and Splitting a Line Set to *On Hold* with Settled Units**
  - The *Hold* status of the line will go to the new split line.
- **Lock Scale Tickets and Reshrink Utility**
  - When a Scale Ticket split has a DPR of *Open Storage* and *Hold* is checked, the Scale Ticket split will not be set as *Reshrunk*.
- **Mass Edit Split Values Utility**
  - If the DPR selection is not set to *Open Storage*, *Hold* cannot be checked.

- If there is a mixture on Scale Ticket splits selected with different *Hold* statuses, only the splits with the DPR set to *Open Storage* can be set to *Hold*.
- Checking *Hold*
  - If the Scale Ticket split record had *Reshrunk* checked, it will be unchecked.
  - Set schedules on Scale Ticket splits to *Open Storage - Hold* defaults.
  - Any pre-existing storage/service charges are cleared out.
- Unchecking *Hold*
  - Set schedules on Scale Ticket splits to default schedules of the disposition.
  - Any pre-existing storage/service charges will be removed and the Charge Start Date will be set to the Scale Ticket's date.
- **Mass Edit Ownership Values Utility**
  - When split lines are set to *Open Storage - Hold*, the Open Storage - Hold default schedules will be used.
- **Mass Edit Transfer Units**
  - If a Scale Ticket split has the *DPR* set to *Open Storage* with *Hold* checked, the transfer Scale Ticket split line will also have *Hold* checked and options to select a DPR and Purchase Contract are disabled.

## Open Storage - Hold Defaults

In Grain STLM, there is the ability to set default Charge, Shrink, Dock, and Drying schedules by Commodity/Location for Scale Tickets in Open Storage that are set to on *Hold*.

Charges are set up by editing/adding a Commodity at *Grain / Setup / Commodities* and selecting **Setup Charges**.

Commodity Location Charges

Commodity: Barley  
Location: 00MAIN

Select the Service Charge Schedule or Storage Charge Schedule that will be applied to settlements when they are created. Specify how pre-existing and initial charges should be handled. Specify which Invoice Item should be used if Charges are invoiced.

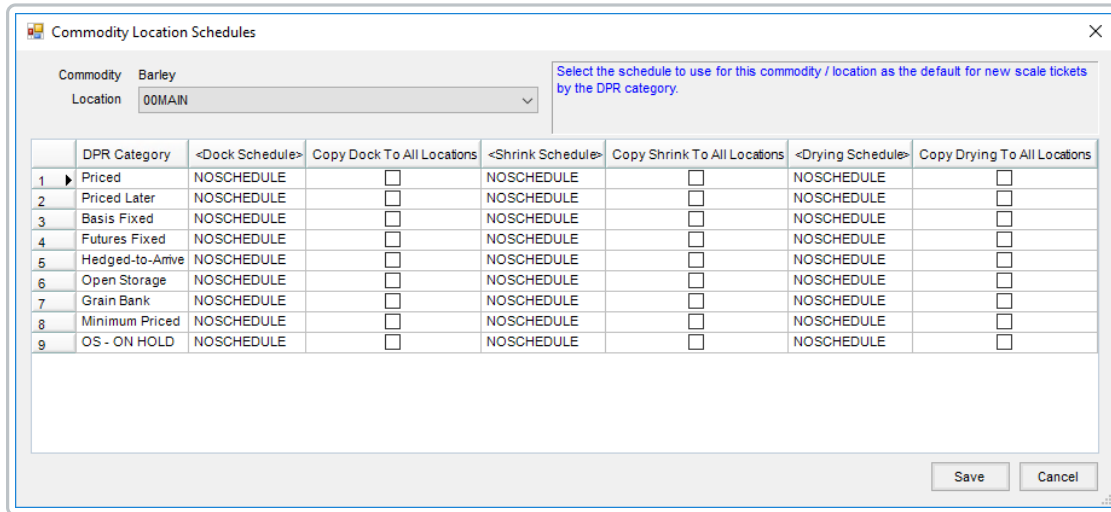
	DPR Category	Charge Schedule	Settlement Action
1	Priced	No Charge	Deduct from Settlement
2	Priced Later	No Charge	Roll Over to New Settlement
3	Installment Sale	No Charge	Deduct from Settlement
4	Basis Fixed	No Charge	Roll Over to New Settlement
5	Futures Fixed	No Charge	Roll Over to New Settlement
6	Hedged to Arrive	No Charge	Roll Over to New Settlement
7	Minimum Priced	No Charge	Roll Over to New Settlement
8	Warehouse Receipt	No Charge	Roll Over to New Settlement
9	CCC	No Charge	Roll Over to New Settlement
10	Grain Bank	StgChOther	Roll Over to New Settlement
11	Redelivered	No Charge	Invoice
12	Non-Non-Warehouse Receipt	No Charge	Roll Over to New Settlement

<Service Item>

<Storage Item>

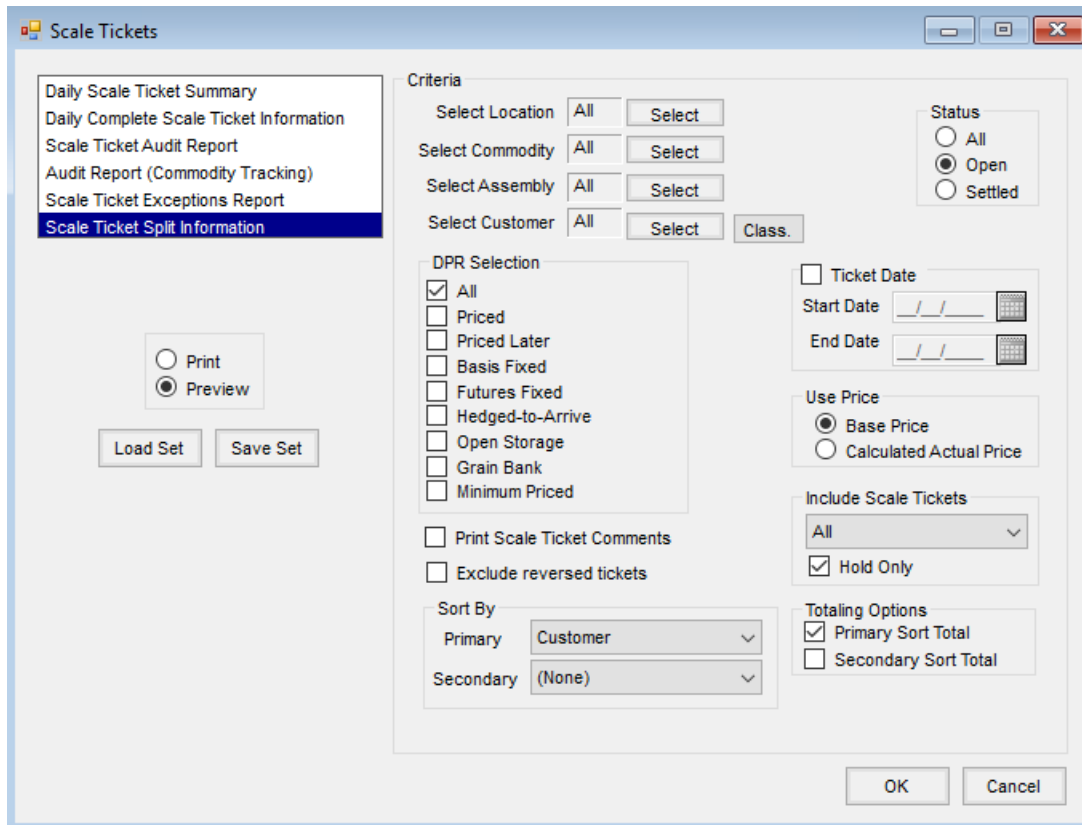
Save Cancel

Schedules are set up by editing/adding a Commodity at *Grain / Setup / Commodities* and selecting **Schedules**.



## Scale Ticket Split Information Report

When running the Scale Ticket Split Information report at *Grain Reports / Scale Tickets*, a checkbox is available to only show Scale Tickets on *Hold*.



When the report is run with the *Hold Only* option checked, the header of the report will be changed to reflect the filter.

# **Scale Ticket Split Information Report**

by Base Price

Posted Status: Open

DPR Status: All

On Hold Tickets Only