

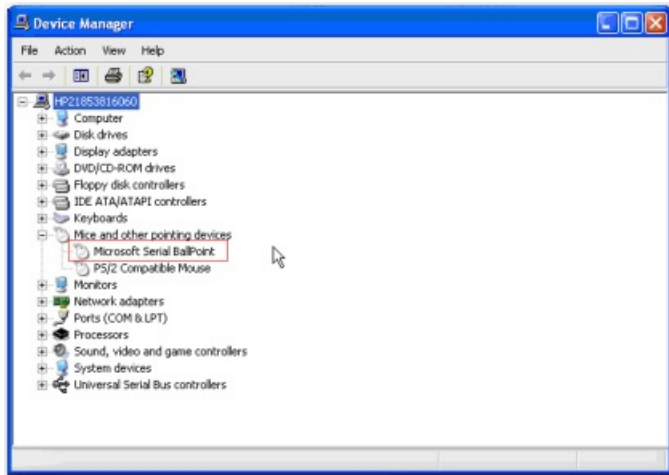
# Capturing Weight Using Scale Interface - 'Run-time error '8005'. Port already open'

Last Modified on 12/20/2022 9:45 am CST

Q. While trying to capture the weight using the Scale Interface, why does the following error message display?

Run-time error '8005'. Port already open

A. Check *Device Manager* for a serial mouse, which will look similar to the following screen shot:



If a serial mouse is listed but not being used, the issue is that the operating system thinks the scale is a serial mouse. Right-click the serial mouse in *Device Manager* and choose the *Disable* option.