

Uncheck Automatically Detect Settings with a Logon Script Using Group Policy Editor

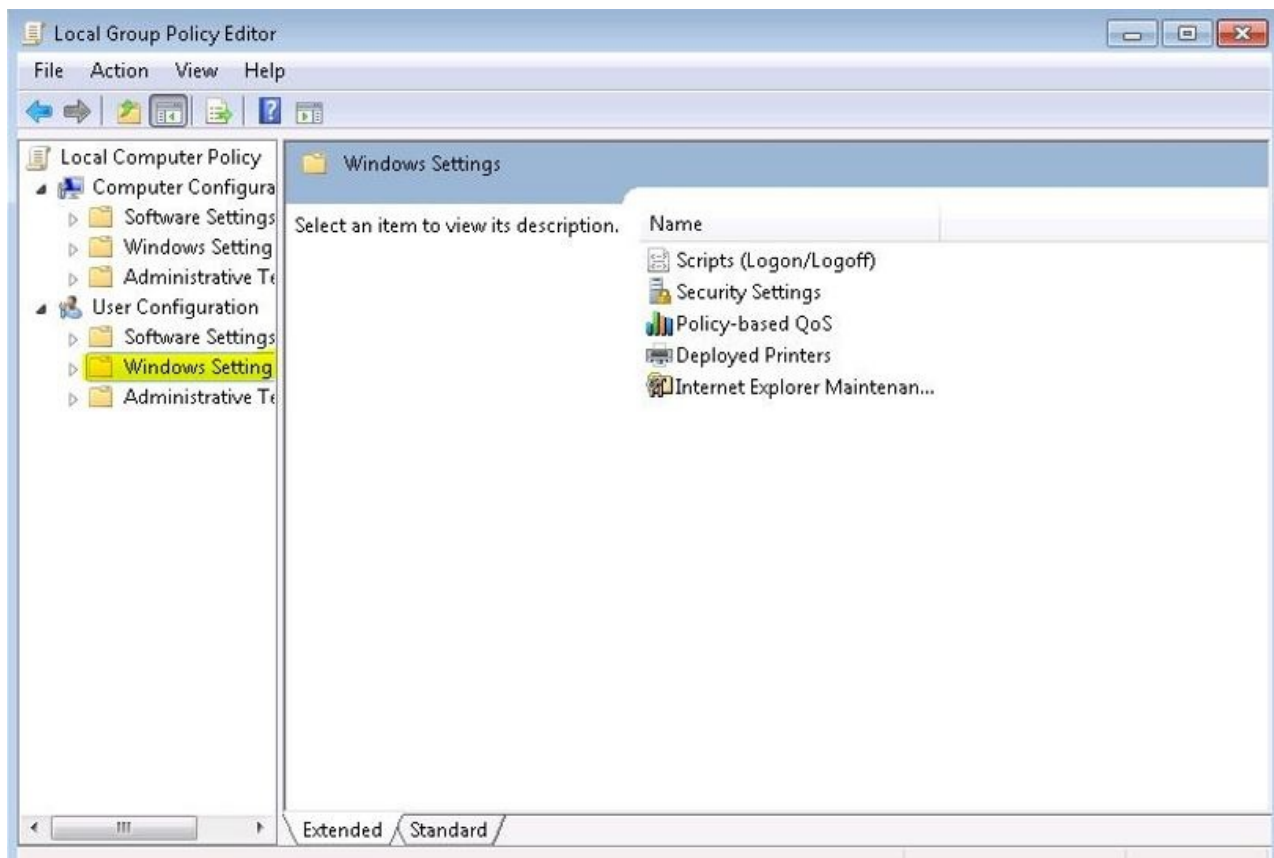
Last Modified on 01/09/2023 2:22 pm CST

In some cases, if the Internet LAN Settings are configured to automatically detect proxy settings, the Agvance modules may take an extra 10 or 15 seconds to open.

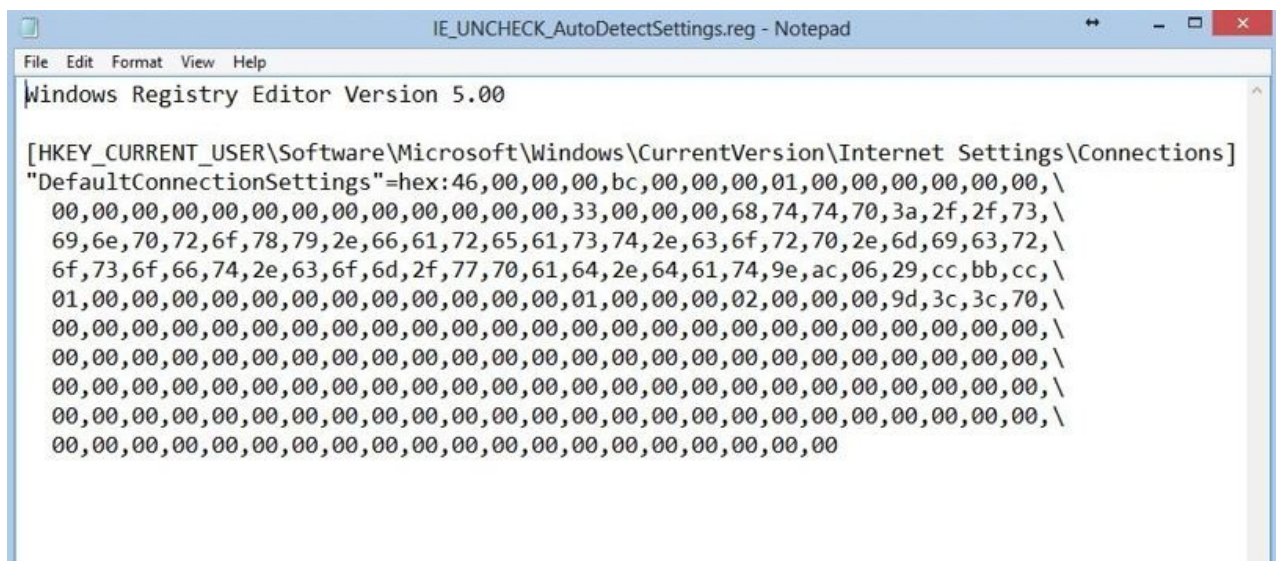
This setting can be turned off (unchecked) by setting up a logon script in Group Policy Editor.

1. Select **Start**. Type `gpedit.msc` in the *Search* field and press **Enter**.

Expand *User Configuration* and select *Windows Settings*.



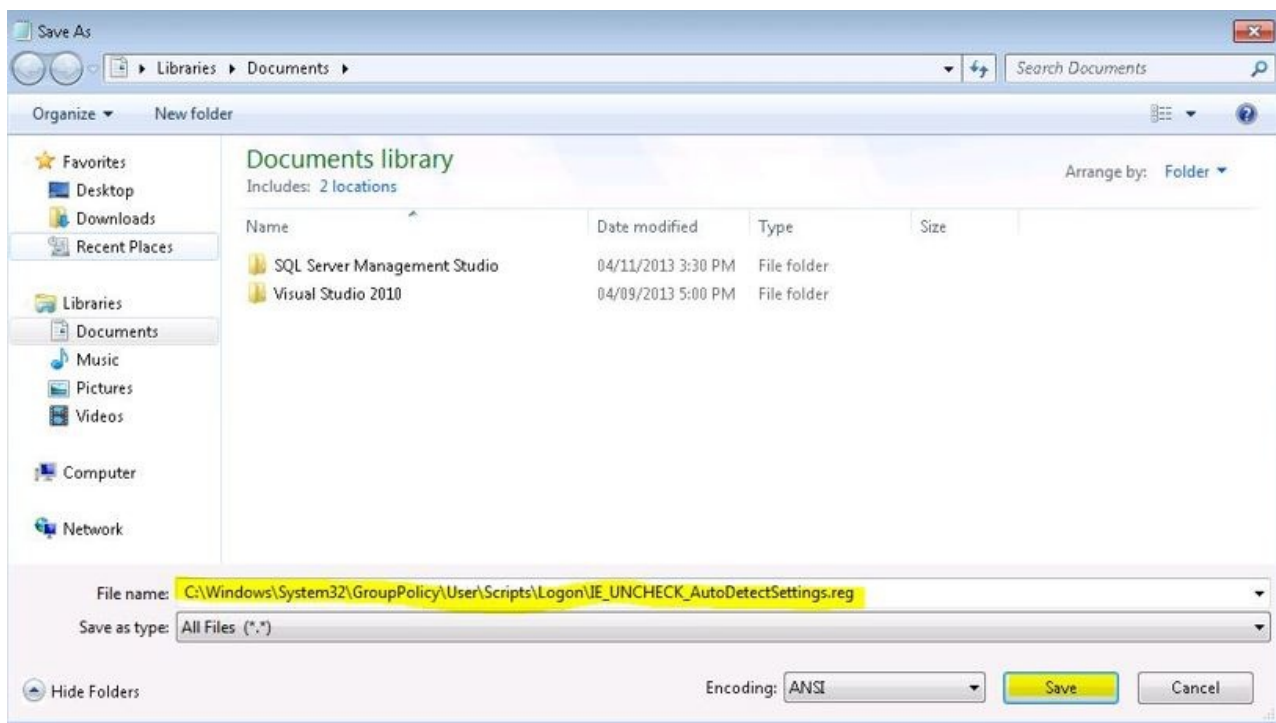
2. Right-click **Notepad** and choose *Run as administrator*.



4. Go to *File / Save as* and copy and paste the line below into the *File Name* field. Make sure *All Files* is selected as the type.

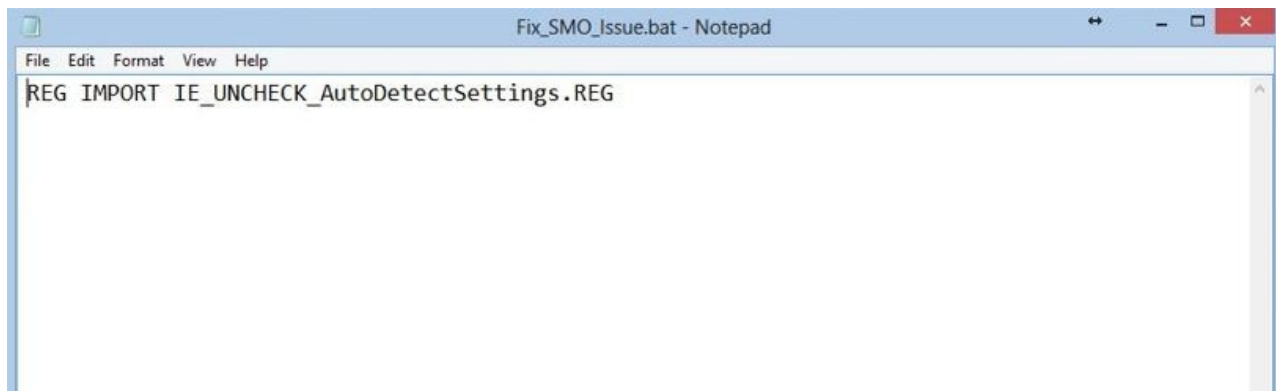
```
C:\Windows\System32\GroupPolicy\User\Scripts\Logon\IE_UNCHECK_AutoDetectSettings.reg
```

Choose **Save**.



5. Copy and paste the following text into a new text document: (Make sure Notepad is being run as administrator.)

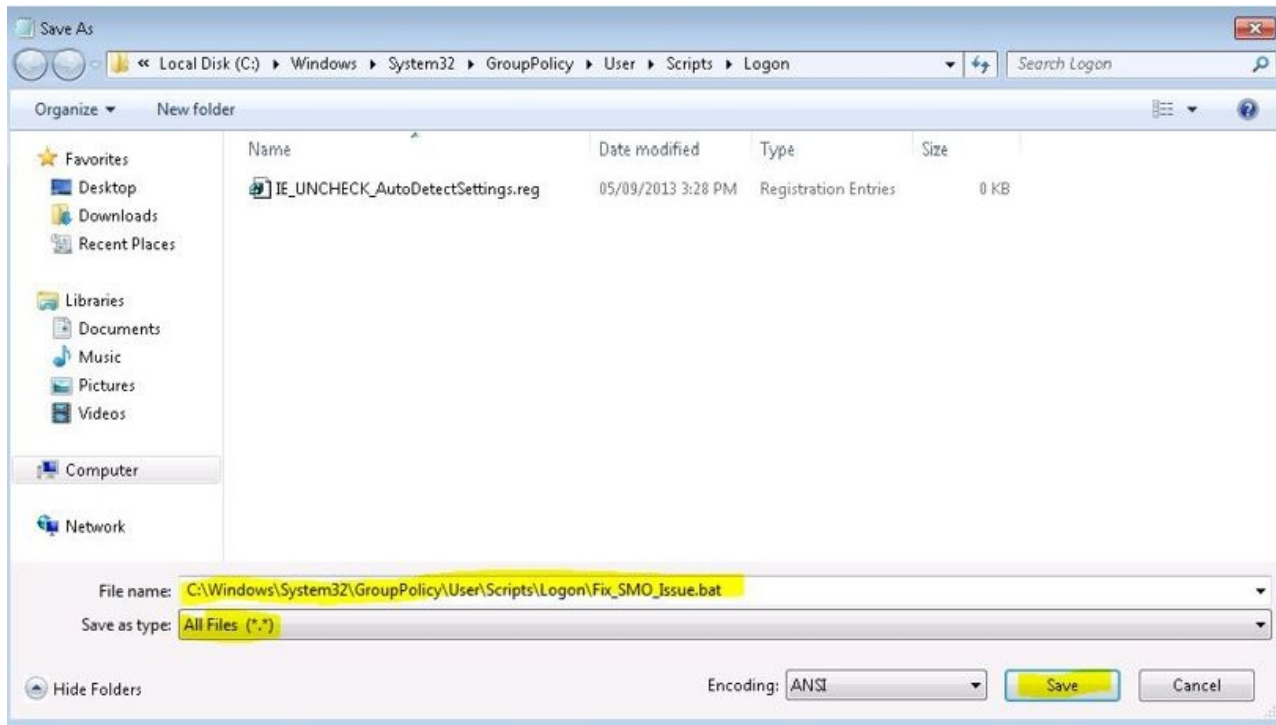
```
REG IMPORT IE_UNCHECK_AutoDetectSettings.REG
```



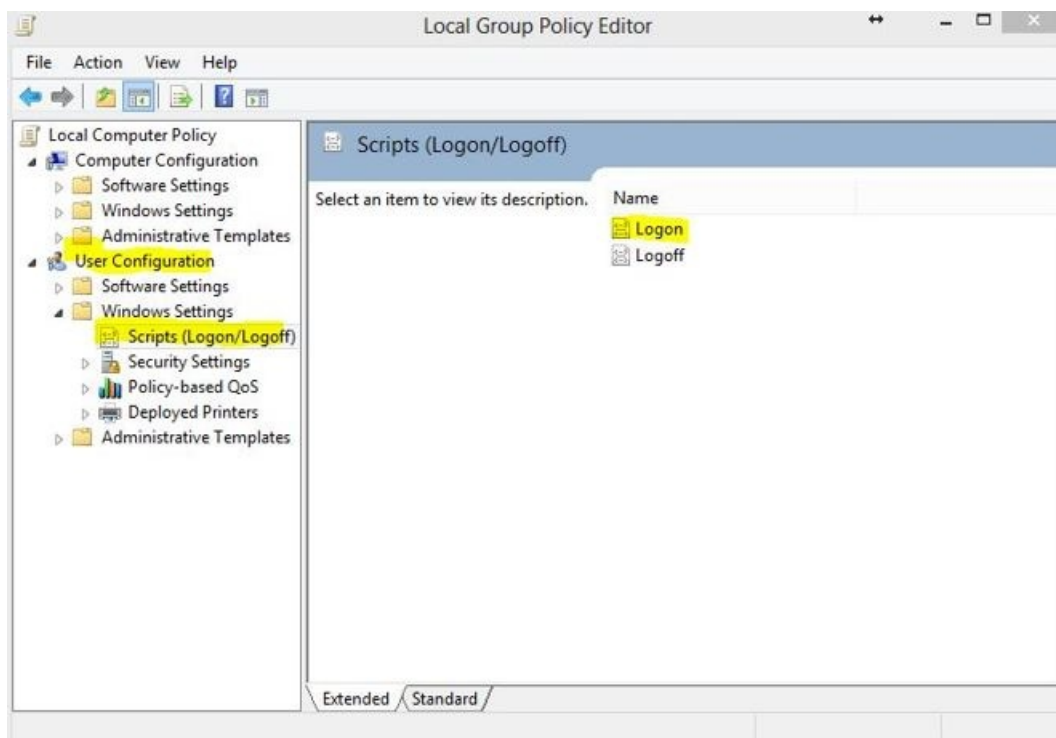
6. Go to *File / Save as* and copy and paste the line below into the *File Name* field. Make sure *All Files* is selected as the type.

`C:\Windows\System32\GroupPolicy\User\Scripts\Logon\Fix_SMO_Issue.bat`

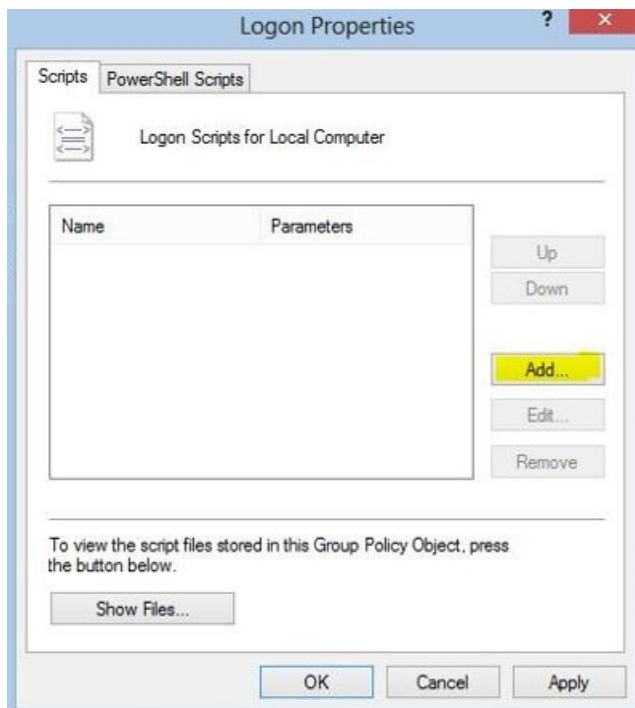
Select **Save**.



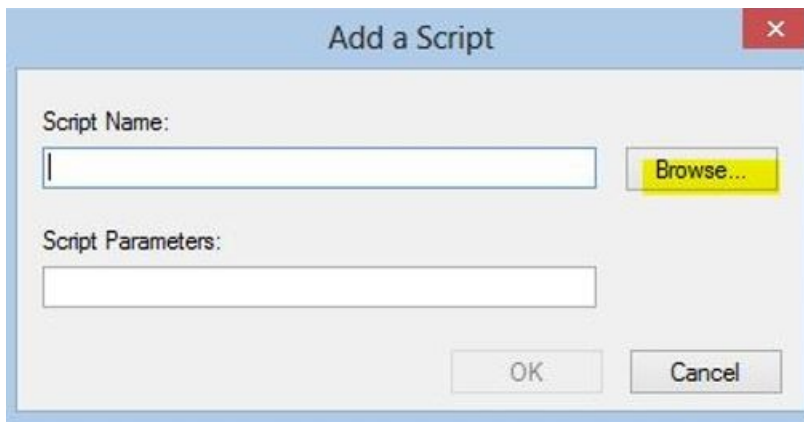
7. Double-click **Logon**.



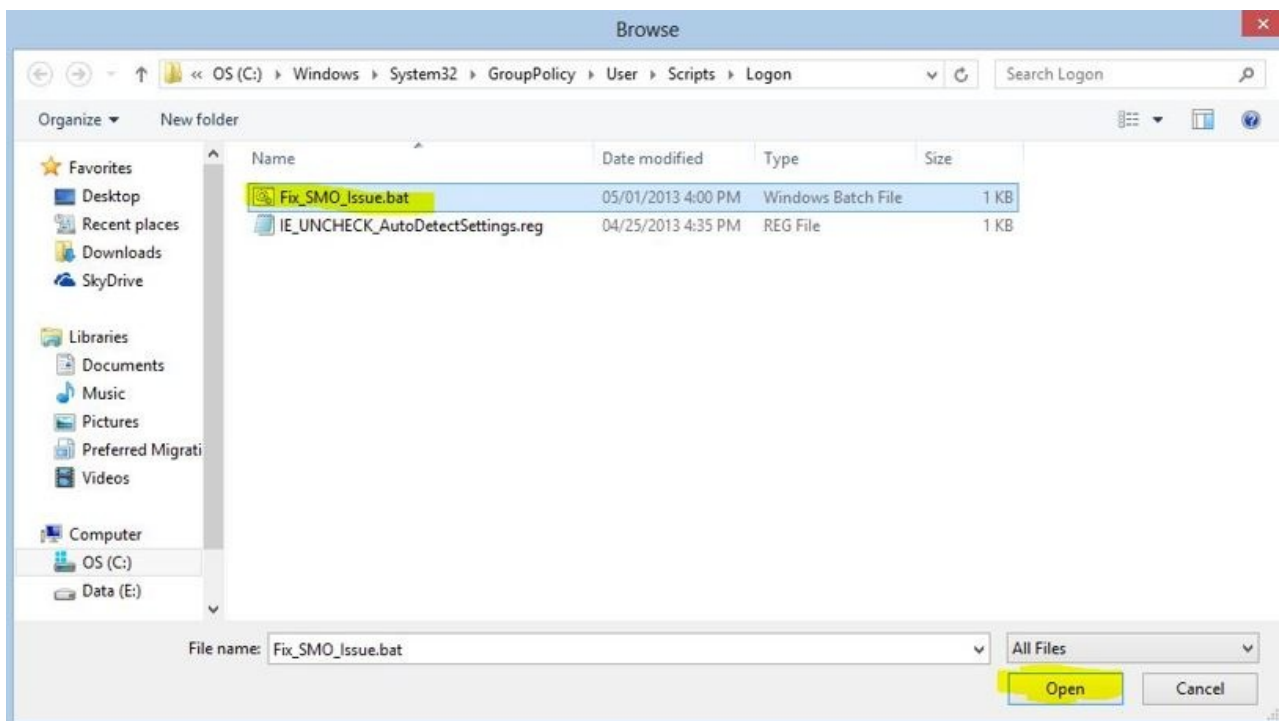
8. Select **Add**.



9. Choose **Browse**.



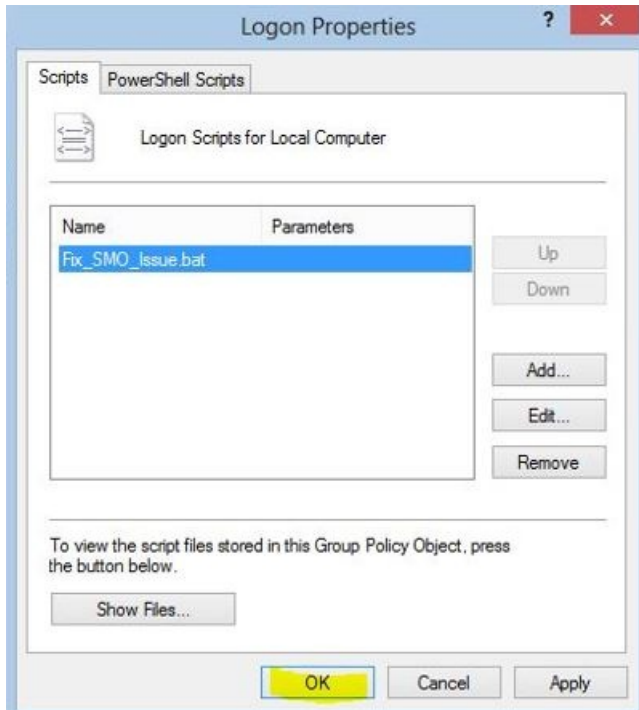
10. Select *Fix_SMO_Issue.bat* and then **Open**.



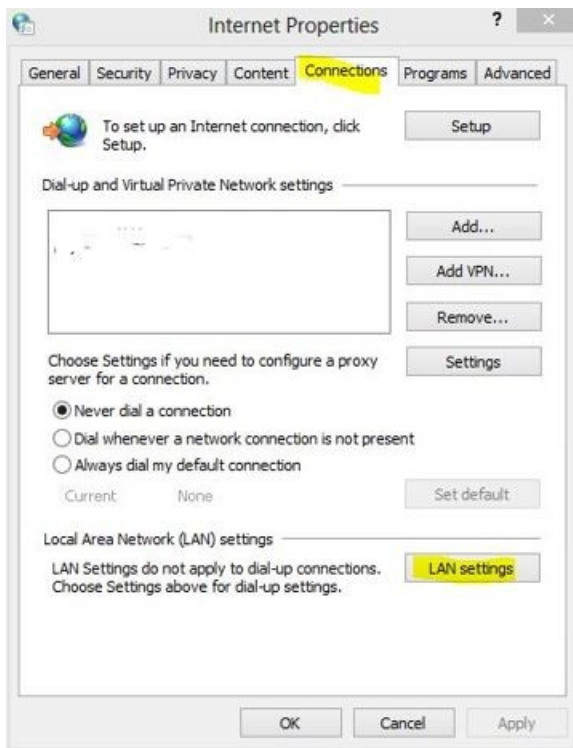
11. Choose **OK**.



12. Choose **OK**.



13. To test the logon script, open *Internet Options* in the Control Panel.



14. Check the options shown below and choose **OK**.



15. Log out of the Remote Desktop session and log back in. Check the settings in *Internet Options*. All the options should be cleared if the logon script is working.

