

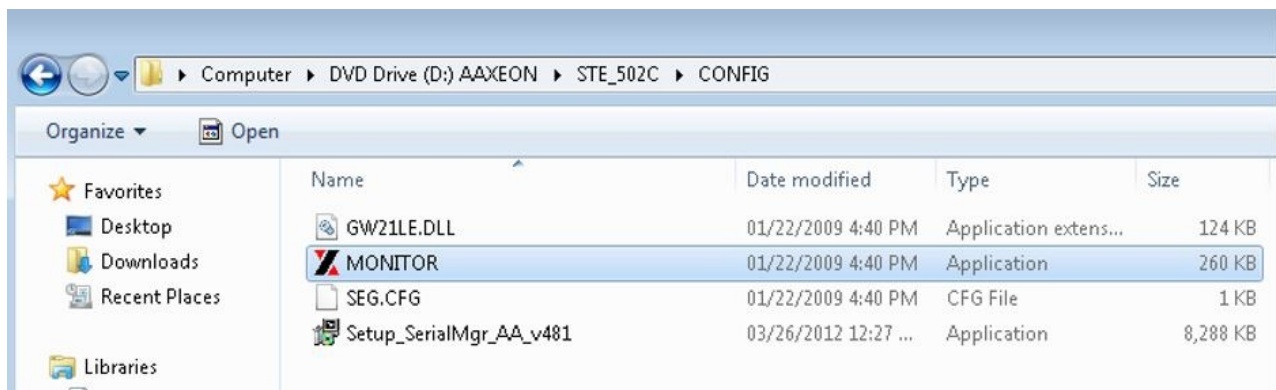
Serial Over IP Device STE-502C Serial-Ethernet Server Setup

Last Modified on 06/24/2025 10:43 am CDT

This document describes how to setup and configure the STE-502C Serial-Ethernet Server. This information can also be used as a general guide when setting up other Serial-Ethernet Server models. Also refer to the STE-502C User's Manual which is available on the CD included with the device.

Setup

Once the device is plugged into the network, insert the DVD. Open the folder for the appropriate brand of Devolinx or Antaria device and navigate to the *CONFIG* folder. Double-click **MONITOR**.



Select the device and choose **Config**.



Edit the information and designate fields as desired to match the domain's network.

Dialog

MAC addr. 00:60:E9:0B:93:CC

IP address 10.0.50.100 ☐ Auto IP

GateWay 10.0.0.254

Mask 255.255.0.0

User ID admin

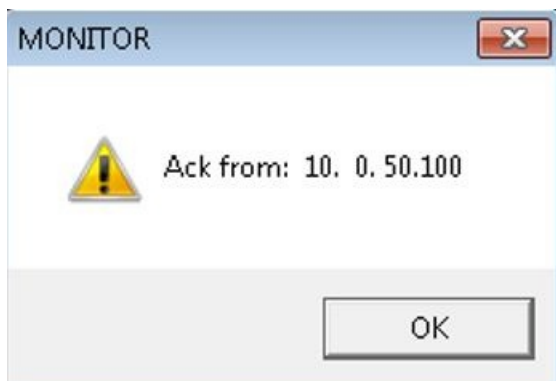
Password

Host Name name

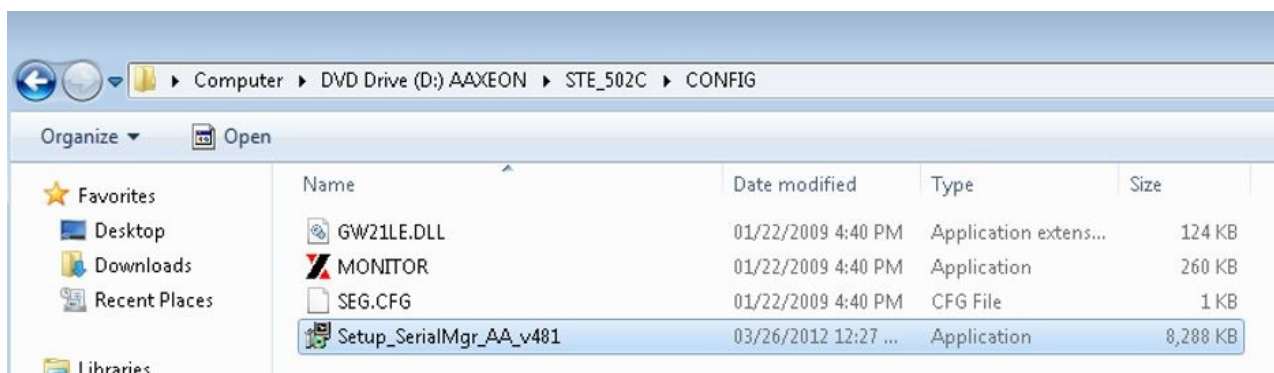
Config Now

Cancel

The Devolinx or Antaria device will beep several times and the window below will appear to show changes have been made.



In the CONFIG folder, run the *Setup_SerialMgr_AA_v481* application as shown below.



Log into the web configuration of the serial server using the static IP address previously assigned.

Setup using a Cardinal Model 205 Scale is as follows:

☐ TCP Server ☒ TCP Client ☐ UDP

Enable VirtualCOM for Serial/IP	<input checked="" type="checkbox"/> Enable
Pair Connection	<input type="checkbox"/> Enable

Enable VirtualCOM Authentication (Note: An empty password will fail to authenticate)	<input type="checkbox"/> Enable
Local Listening Port	4660
IP Filter	<input type="checkbox"/> Enable, Source IP : 0.0.0.0
Idle Time Before Sending TCP Alive Packet	4 *10 sec (0~255, 0:Disable)
TCP Inactivity Time Before Disconnect	0 sec (0~255, 0:Disable)

COM1

To configure COM port parameters.

Serial Interface	RS-232
Alias Name	COM 1
Baud Rate	9600 ▼
Parity	<input checked="" type="radio"/> None <input type="radio"/> Odd <input type="radio"/> Even <input type="radio"/> Mark <input type="radio"/> Space
Data Bits	<input type="radio"/> 7 bits <input checked="" type="radio"/> 8 bits
Stop Bits	<input checked="" type="radio"/> 1 bit <input type="radio"/> 2 bits
Flow Control	<input checked="" type="radio"/> None <input type="radio"/> RTS/CTS <input type="radio"/> DTR/DSR <input type="radio"/> Xon/Xoff

Empty Serial Buffer When TCP Connection is Established	<input checked="" type="radio"/> YES <input type="radio"/> No, (Default: Yes)
Data Packet Delimiter	<input checked="" type="radio"/> Inter-character Time Gap : 2 msec (0~30000, 0:Disable) <input type="radio"/> Characters : 0x0d ("0x" + Hex Code, e.g. "0x0d" or "0x0d0a")
COM Type Selection	<input checked="" type="radio"/> RS232 <input type="radio"/> RS485 <input type="radio"/> RS422

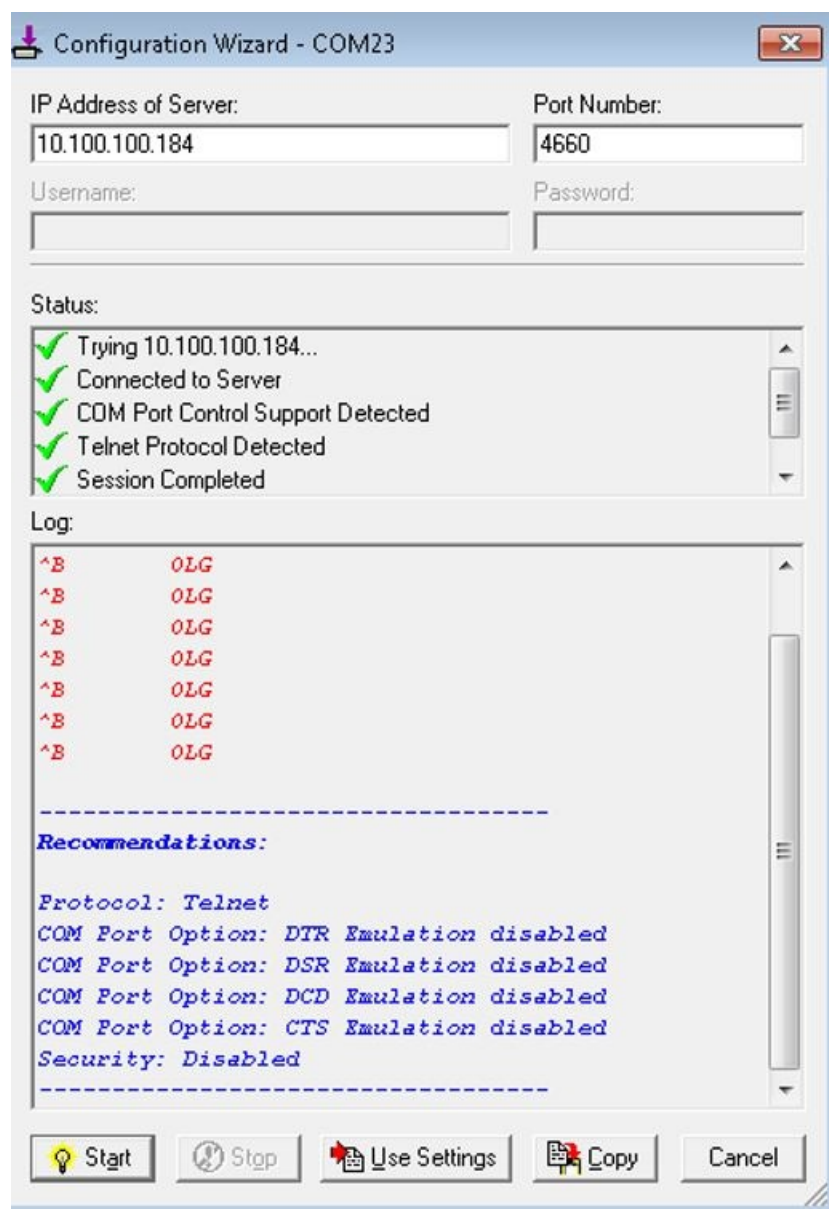
The *COM Type Selection* is based on the Scale used. Refer to the Scale Manual as to what type to select.

Open the *Serial/IP Control Panel* window.

Select the COM port to use and configure it using the static IP address and port number established in the web configuration. Make sure the *Restore Failed Connections* option is checked.



Select **Configuration Wizard** to confirm proper settings.



If the result is as shown above, choose **Use Settings**.

Change the COM port selection in Agvance to match the designated COM port selected above.