

Recalculating Scale Tickets

Last Modified on 03/02/2022 9:34 am CST

Overview

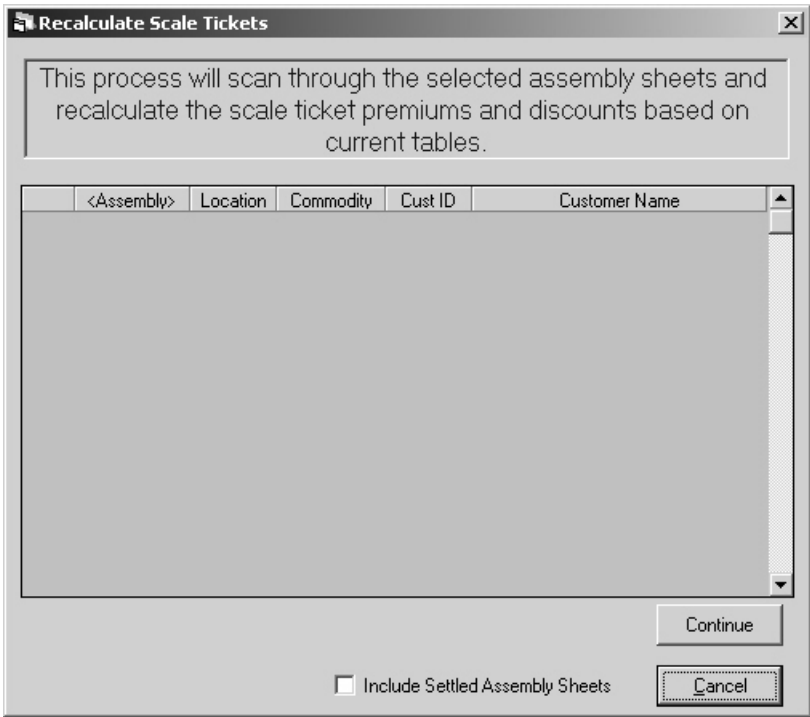
How do I recalculate premium/discounts on scale tickets?

Setup

When a premium/discount table that has been applied to an assembly sheet has been modified or changed, this process should be used to reflect the modifications or changes on related scale tickets.

To recalculate scale tickets:

Go to *Grain / Utilities / Recalculate Premium/Discount on Scale Tickets*.



Double click on the *Assembly* column heading.

Select the assembly(ies) that need the scale tickets recalculated. Click **Done** when all are selected.

Select Assembly Sheet Σ

This process will begin through the selected assembly sheets and

Assembly	Location	Commodity*	Cust ID	Customer Name	Contract	DPR	Comment	COF	Split %
1023	East	07	3BumJi	Bummer, Jimmy		Priced			50.0000
1019	Main	CN	3DneJu	O Neal, Justin		Grain Bank			100.0000
1019	East	CN	3BumJi	Bummer, Jimmy		Open Storage			100.0000
1021	East	CN	3BumLu	Bummer, Luke		Priced			33.3300
1022	East	CN	3BumJi	Bummer, Jimmy		Priced			100.0000
1024	East	CN	3SpeSa	Speaker, Sara	PL1001	Priced Later			100.0000
1025	East	CN	3SpeSa	Speaker, Sara	111	Priced		0	100.0000
11111	Main	CN	1AndBa	Anderson, Barry		Open Storage			100.0000
1020	East	WH	3BumLu	Bummer, Luke		Priced Later			100.0000

Commodity

Assembly Settled Filter

Open Assemblies dated:

Closed Assembly Location:

Assembly Partial Match:

Tagged



Click the **Continue** button to recalculate.