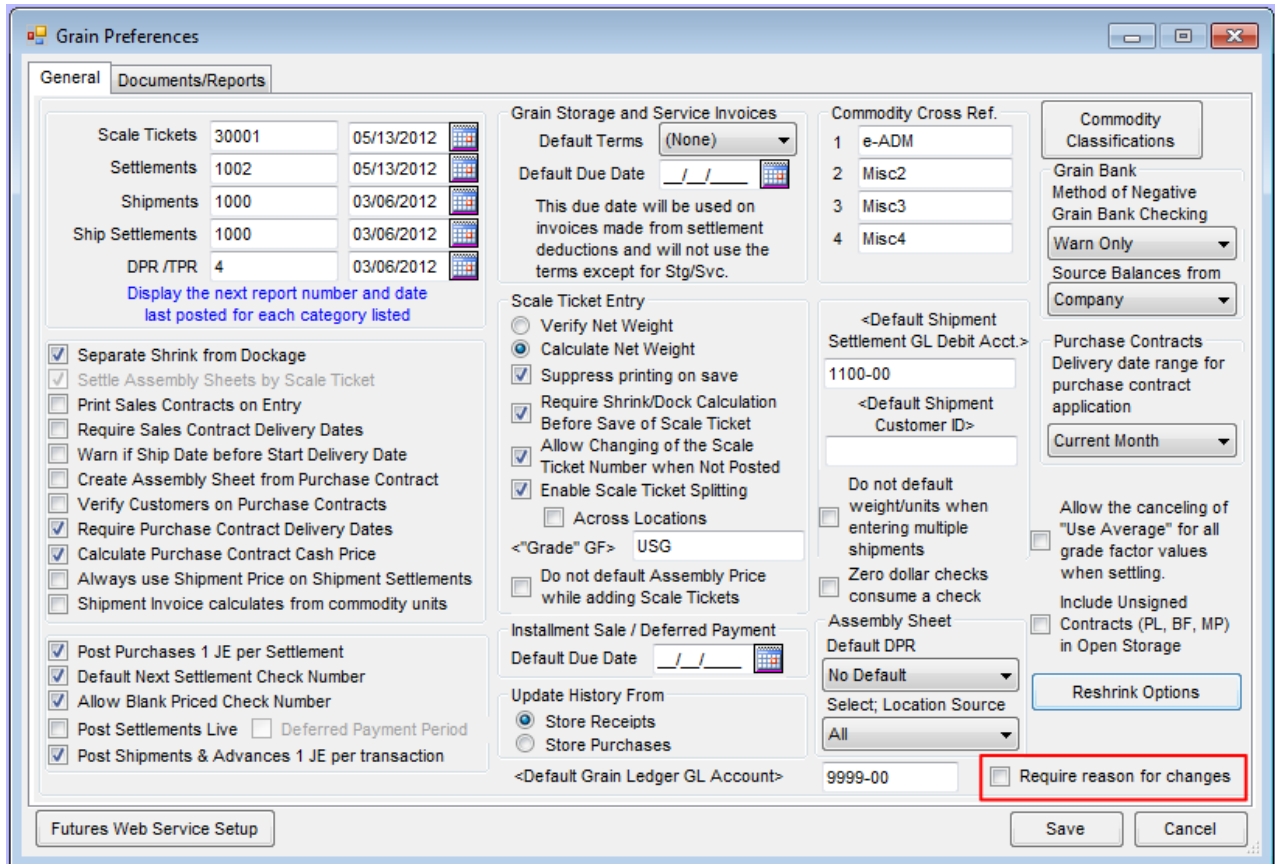


# Grain Change & Delete Log

Last Modified on 12/28/2022 4:18 pm CST

**Q.** Is there a function in Agvance Grain that shows what changes or deletions occur on various grain transactions and settlement deductions along with who made the changes?

**A.** A change/delete log automatically records changes and deletions that occur along with the identity of the user responsible for the change or deletion. A report is available showing these changes or deletions. A preference can be set to require a reason to be entered when changes or deletions are made.



\*\*The preference to require a reason is located in *Grain / Setup / Preferences / General*. If this option is not checked, a reason for the change is not required to save the transaction.