

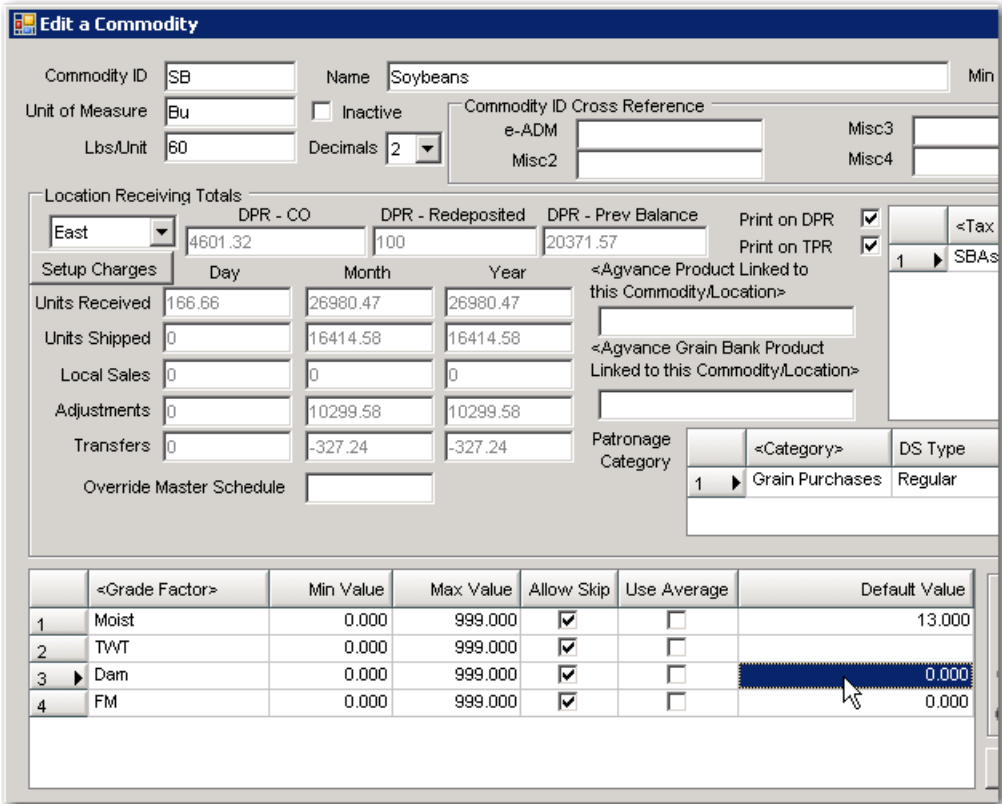
Default Grade Factor Values

Last Modified on 01/09/2023 1:16 pm CST

Q. How do I set up default grade factor values to default as the grade factor result when adding scale tickets in the Grain module and when adding scale tickets in Grain Scale Interface (including during the import process if commodity is changed)?

A. In the Grain module, go to *Setup/Commodities*. Select a commodity and for every grade factor that is set up for this commodity, optionally left-click in the *Default Value* field and enter a value that will automatically default when adding a scale ticket.

Note: These default values can be overwritten during the ADD of the scale ticket.



When adding a scale ticket in Grain, as soon as an assembly is selected and the commodity is known, the default values that have been set for a grade factor will populate the appropriate *Result* field. When adding a scale ticket in Scale Interface, as soon as an assembly or the commodity is selected, any default values that have been set up will populate the appropriate *Result* field.

Examples:

(Adding a scale ticket in Grain module)

Add a Scale Ticket

<Assembly #> 1053 ? New Assembly Sheet

Location East Commodity SB

Ticket # Not Posted

Ticket Date 06/04/2012 <Farm ID>

Base Price 10.0000 <Field ID>

Gross Weight Lot Num

Tare Weight

Net Weight

Dockage %

Shrink %

	Test	Result	
1	Moist	13.000	
2	TWT		
3	Dam	0.000	
4	FM	0.000	

(Adding a scale ticket in Scale Interface)

Add a Scale Ticket (Scale 1)

<Assembly #> New Assembly Change Scale To Use

<Location> East <Commodity> SB Soybeans

Ticket # (Auto) <Name> Share% Contract

Ticket Date 06/04/2012

Cash Price 6.1200

Gross Weight lb Add Customer Add Recent Customer

Tare Weight lb

Net Weight lb

Dockage %

Shrink %

	Test	Result	<Shrink Sched>
1	Moist	13.000	1
2	TWT		NOSCHEDULE
3	Dam	0.000	NOSCHEDULE
4	FM	0.000	NOSCHEDULE