

Monthly Summary DPR

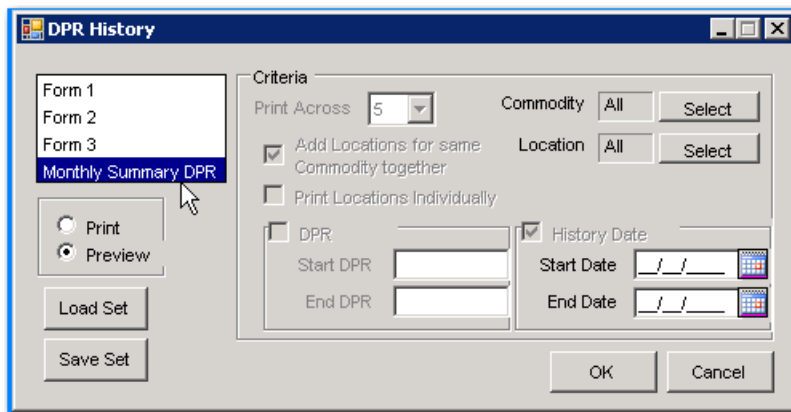
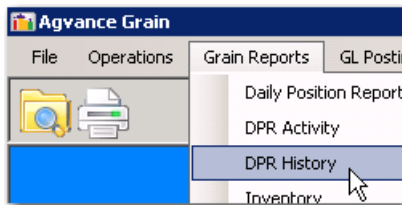
Last Modified on 03/01/2022 10:33 am CST

Overview

The Monthly Summary DPR was added to meet the minimum requirements of the rules and regulations of the state of Iowa. This format has been reviewed by warehouse staff at the Iowa Department of Ag and is acceptable for use by Iowa locations. This DPR is designed to be printed at the end of the month and kept on file for review by Iowa grain examiners. A more detailed DPR such as the Combined Daily Position Record should be used for daily use and saved to history so it will be available to examiners to review and see a more detailed breakdown of each day's position if needed.

Setup

The Monthly Summary DPR is available at: *Grain Reports / DPR History / Monthly Summary DPR*.



Select the Commodity(s) and Location(s) to be included in the report as well as the *Start Date* and *End Date* range for the month desired.

The following is a detailed description of each column in the report and what is included in each column:

Total Stock Column - reflects the increases, decreases, adjustments and ending balance for grain in approved storage space (a combination of grain in licensed elevator facilities plus re-deposited grain stored at other licensed grain warehouses, if any);

Open Storage Column - reflects the increases, decreases and ending balance for customer owned grain that is not on negotiable or non-negotiable warehouse receipt (typically, grain in open storage plus grain bank that is not on a non-neg W/R, plus Credit Sale (PL) grain which is not yet on a Credit Sale (PL) contract that has been signed by both buyer and seller);

Warehouse Received Column - reflects the increases, decreases and ending balance for grain that is on negotiable and/or non-negotiable warehouse receipt;

Unpaid Company Owned Column - reflects the increases, decreases and ending balance for grain on signed Credit Sale(PL) contract plus all grain settled to a status of Priced Not-Paid, Deferred Payment and Installment Sale for which final payment has not yet been made;

Paid Company Owned Column - reflects the increases, decreases and ending balance for grain in approved space (grain in licensed elevator facilities plus re-deposited grain) for which the seller has been paid;

Total Company Owned Column - represents the total amount that is 'unreceipted' company owned grain that is stored in-elevator facilities and/or redeposited for storage at another licensed warehouse;

Total Obligation Column - is basically a cross check column and is the sum of the Open Storage, Warehouse Receipted, Unpaid Company Owned and Paid Company Owned Balance columns. It should match the Total Stocks Balance column (May be off a couple bushels due to rounding of all numbers in this report to whole numbers. This has been approved by the Iowa Dept of Ag.).

Example of a Monthly Summary DPR

Note: Only the days that had a DPR saved to history are included in this report. If multiple DPRs were saved for a given date, the numbers listed in this report represent a compilation of all those DPRs' activity.

Monthly Summary DPR																		
History Date Range - 04/01/2012 thru 04/30/2012																		
Locations: All																		
Commodity - Corn (Com)																		
April 2012																		
Day	Total Stocks				Open Storage			Warehouse Receipted			Unpaid Company Owned			Paid Company Owned			Total Company Owned	Total Obligation Balance
	Increase	Decrease	Adjustment	Balance	Increase	Decrease	Balance	Increase	Decrease	Balance	Increase	Decrease	Balance	Increase	Decrease	Balance		
2	0	0	0	79306	0	0	22629	0	0	21221	0	0	0	0	0	35466	35466	79306
3	0	564	-5	78747	0	559	22070	0	0	21221	0	0	0	0	0	35466	35466	78747
4	0	0	0	78747	0	0	22070	0	0	21221	2958	0	2958	0	2958	32498	35466	78747
5	0	0	0	78747	0	0	22070	0	0	21221	0	0	2958	0	0	32498	35466	78747
6	0	142	0	78605	0	133	21937	0	0	21221	0	0	2958	0	9	32498	35447	78605
9	0	2353	0	76253	0	339	21598	0	0	21221	1671	0	4629	0	3684	28805	33434	76253
10	0	447	0	75806	1	429	21170	0	0	21221	0	0	4629	0	18	28787	33416	75807
11	0	3998	0	71808	0	0	21170	0	0	21221	0	0	4629	0	0	29417	29417	71808
12	0	4477	0	67330	-1	154	21015	0	0	21221	0	0	0	0	4323	25004	25004	67330
13	0	3277	-35	64019	0	341	20574	0	0	21221	0	0	0	0	2971	22123	22123	64018
16	0	5042	0	58978	0	0	20574	0	0	21221	0	0	0	0	5042	17081	17081	58978
17	0	3413	4	55568	0	336	20338	0	0	21221	0	0	0	0	3073	14008	14008	55567
18	0	-3	-3	55568	0	0	20338	0	0	21221	4033	0	4033	0	4033	9975	14008	55567
19	0	14	4	55558	0	0	20338	0	0	21221	1977	0	6010	0	1986	7989	13999	55558
20	0	0	0	55558	0	0	20338	0	0	21221	0	0	6010	0	0	7989	13999	55558
23	0	340	0	55218	1	340	19999	0	0	21221	1955	0	7965	0	1956	6033	13998	55218
24	0	252	0	54966	-1	252	19746	0	0	21221	0	0	7965	0	0	6033	13998	54966
25	98	338	0	54728	0	336	19410	0	0	21221	1076	0	9041	0	981	5052	14000	54724
26	0	3082	0	51643	0	0	19410	0	0	21221	1	98	8944	0	2984	2068	11000	543
30	0	339	-139	51165	1	338	19073	0	0	21221	0	8944	0	8803	0	10871	10000	166