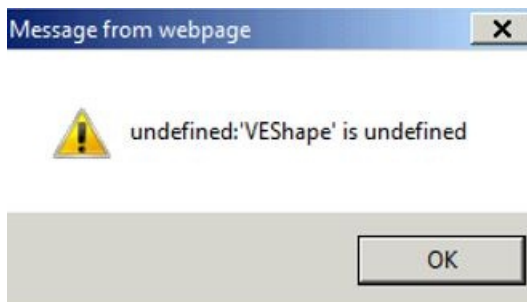
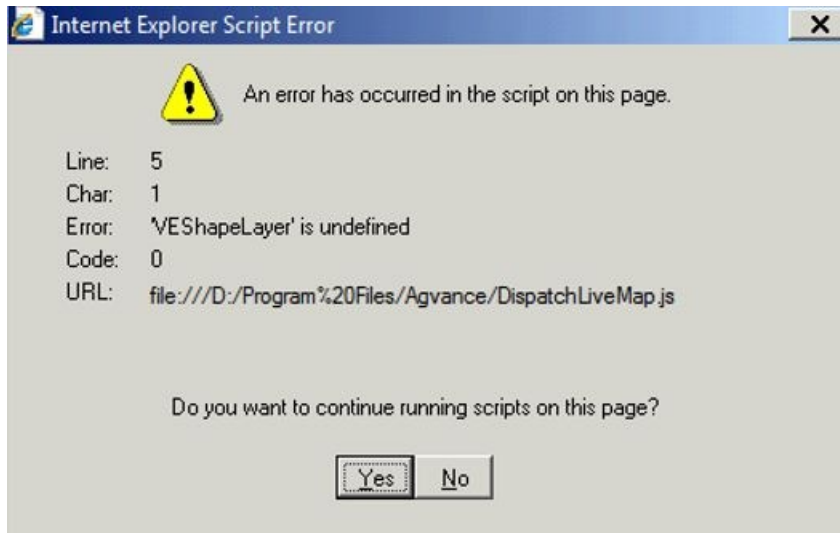


Unable to Access Imagery for Geocoding and Dispatch

Last Modified on 05/28/2025 10:45 am CDT

Q. An error occurred while receiving the HTTP response to <http://www.agvancemaps.com/MapLayers/AgvMaplayers.asmx>. One of the following error messages displayed.



A. The inability to access imagery is because JavaScript is turned off. JavaScript is required to be enabled to access the imagery.