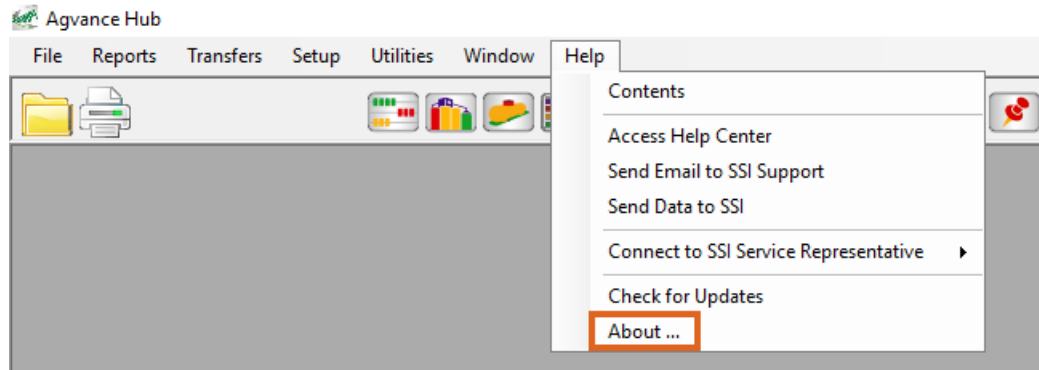


How to Find the Agvance SQL Server Version

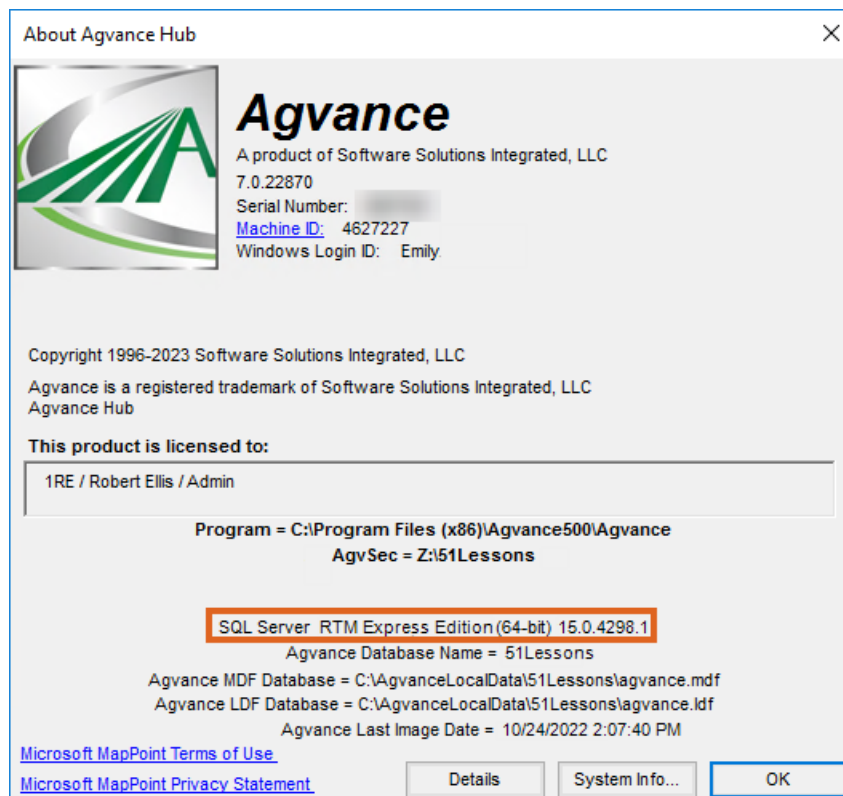
Last Modified on 05/06/2026 12:03 pm CDT

Agvance 7.0 requires SQL Server 2014 or higher.

From within one of the core Agvance modules, select *Help / About*.



The SQL Server version controlling the Agvance database displays on the *About Agvance Hub* window.



The internal version number, such as 15.0.4298.1, is the best way to accurately determine the SQL Server version.

Refer to the following information to determine the SQL Server version being used:

- **12.0** – SQL Server 2014
- **13.0** – SQL Server 2016
- **14.0** – SQL Server 2017
- **15.0** – SQL Server 2019
- **16.0** – SQL Server 2022
- **17.0** – SQL Server 2025