

# Blending Interface with the Repete Corp/Sabre Feed System

Last Modified on 01/10/2023 2:00 pm CST

## Feed Formulas

Feed Formulas will need to be set up in Agvance Planning as Field Plans. To create a new Field Plan, go to *Planning / File / Open / Field Plan*. On the *Select a Plan* window, double-click to select a Field and add the feed plan(s) for each customer.

The screenshot shows the 'Edit Plan AndBa/Long/A' window. The 'General' tab is selected. Fields include: Customer ID (AndBa), Field ID (Long), Zone (All), Crop (Corn), Plan (A), Placement (Knifed), Est. Execution Date, Ordered Date (12/10/2020), Start Date, End Date, Crop Chemistry, <Billing Notes> (corn preplant chem), <Quantity> (33.71 Acres), Product Set (01-BasicDry), Apply New Acres, Import Blend, Import Sales Order, Price By (Guaranteed Analysis (%)), Registration #, <N>, <P>, <K>, <S>, UD, <Ca>, <Mg>, <Zn>, <Fe>, <Mn>, <Cu>, B, Formulate By (Lbs of Plant Food, Guaranteed Analysis), Lbs of Analysis (2000), Gal of Analysis, Start With Products, Load Nut Recs, Formulate, View Analysis, Show Splits, Additional Info..., Edit to Actual, Save & New, Save, Cancel, and Print on Save checkbox.

## Product Attribute

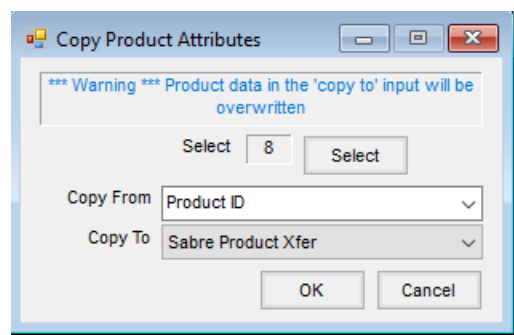
A Product Attribute will need to be set up to hold the Product ID. Go to *Hub / Setup / Company Preferences / Product tab / Product Attributes / Add*. Name and save the new Product Attribute that will be used to store the Product ID. The Product ID stored in this attribute for a product will be included in the files exported from Agvance, which will then be imported into the Repete/Sabre Feed system.

The screenshot shows the 'Add An Attribute' window. Fields include: Attribute Name (Sabre Product Xfer), Maximum Length (empty), Disallow Duplicates (checkbox), Required (checkbox), Save, and Cancel buttons.

The new attribute value for each feed product will need to be populated with the Product ID. A utility is available to make that process automatic.

Go to *Hub / Utilities / Admin Utilities / Hub / Batch Attributes Maintenance / Copy Product Attributes*.

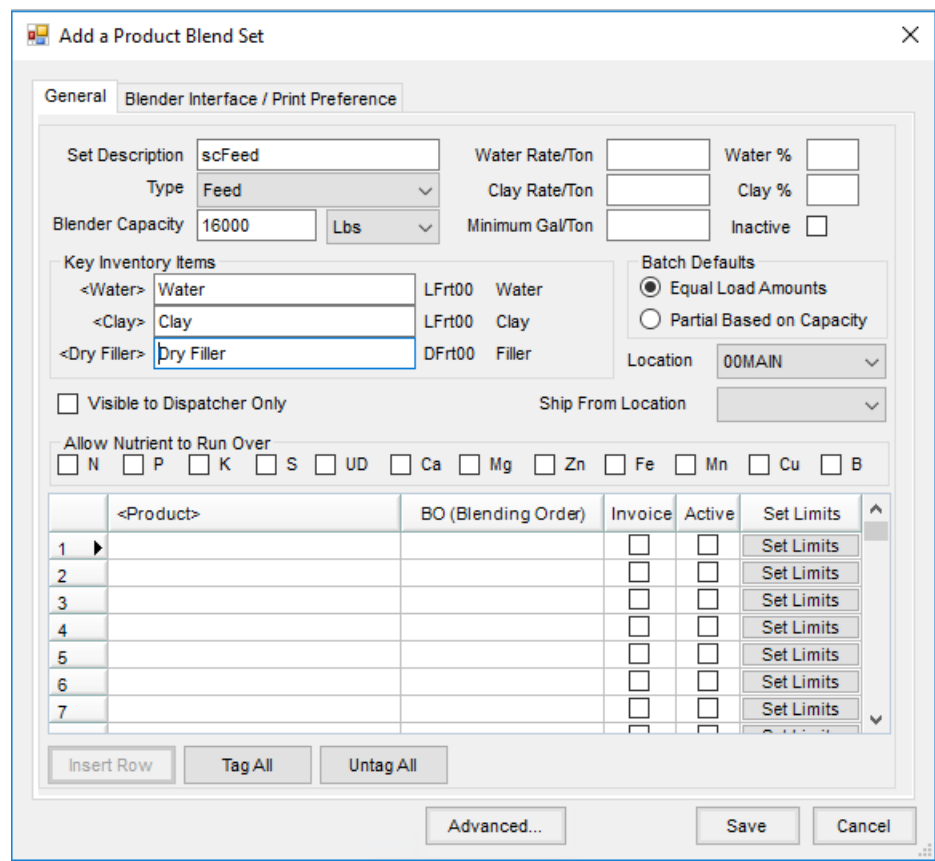
Select all the products that will be used in making feed and choose *Product ID* in the *Copy From* drop-down menu. For the *Copy To* drop-down menu, select the name of the attribute previously setup for the Repete/Sabre Feed system cross reference and choose **OK**. This will populate each product's Agvance ID into the new attribute value for all the selected products.



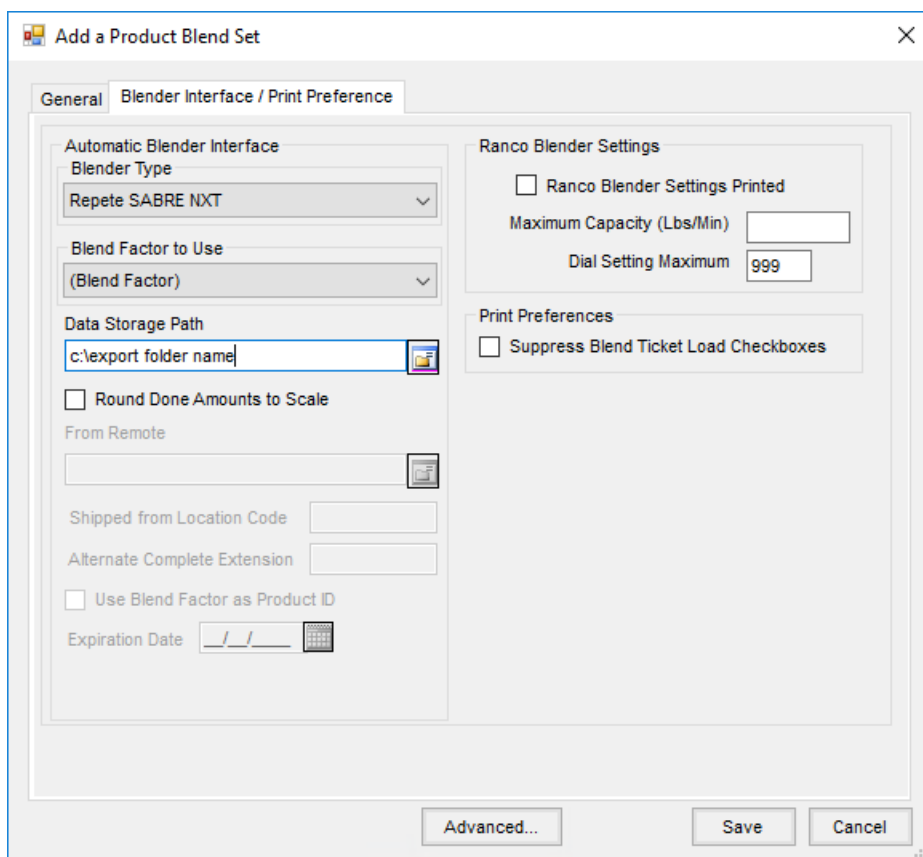
**Note:** Each new product entered after this utility is run must have the Agvance product ID manually entered into that *Attribute* field.

Product Set

Go to *Blending / Setup / Product Sets* and choose **Add**.



At the *Blender Interface / Print Preference* tab, select *Repete SABRE NXT* as the *Blender Type*, set the path to the folder where you want the exported files to be saved, and select the Product Attribute name previously set up to hold the Product ID as the *Blend Factor To Use*.



## Exporting Information From Blend tickets

After adding and saving a Blend Ticket that used a Feed Plan (a Plan that was setup in the Planning module), the *Print Blend Documents Ticket* window appears. In the *Blend Ticket Options* section, check the *Create Automated Blender File* preference. This will cause an export file to automatically be created when selecting **OK** or if an export file already exists in the destination folder, information from this Blend Ticket will be appended to the information currently in that existing file. The export file can be found in the folder specified by the path set during setup of the Product Set. The export file can be imported into the Repete/Sabre Feed system at any time.

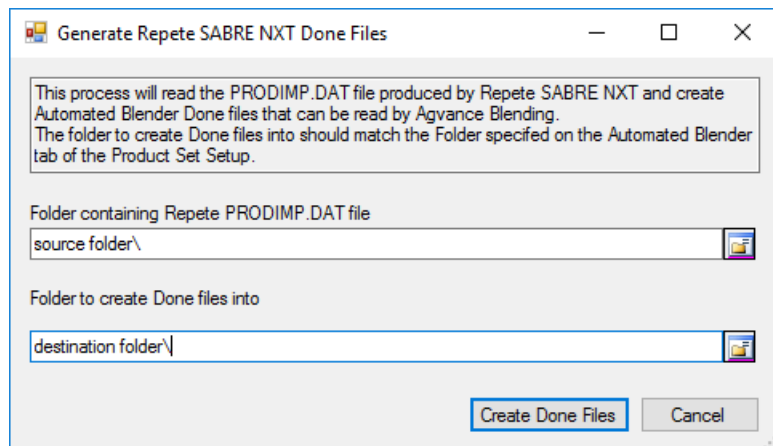
## Information Exported From Repete/Sabre System

When the Repete/Sabre Feed system exports information, it will either create a new file called PRODIMP.DAT or will add information to an existing PRODIMP.DAT file if one exists.

**Note:** If a product is substituted in the Repete/Sabre system for a feed blend, it is critical that the corresponding Blend Ticket for that feed mix be edited to show the actual products which are going to be used. This must be done before the Repete file is imported into the Blend Ticket. This will ensure when a Repete Done file is imported into a Blend Ticket, the products in the file will always match the products on the Blend Ticket, and the quantities used will update the Blend Ticket and be accounted for when the Blend Ticket is imported into an Invoice.

## Importing Information Into Blend tickets

When ready to import information from the PRODIMP.DAT file into Agvance Blending, go to *Agvance Blending /*



The *PRODIMP.DAT* file can contain information on one or several completed feed jobs. As a result, information relating to each Blend Ticket will need to be split out of the *PRODIMP.DAT* file into separate files. This utility will split out individual Blend Ticket information from the *PRODIMP.DAT* file into individual files containing the Blend Ticket number in the name and an *.ACT* file extension. These individual files will then be ready to import into Blend Tickets.

Set the path for *Folder containing the Repete PRODIMP.DAT file* to point to the folder where the file created by the Repete/Sabre Feed system will be stored.

Set the path for *Folder to create Done files into*, which is the folder where the individual files created by this utility are to be stored. The path should be to the same folder set on the *Blender Interface / Print Preference* tab when adding the product Blend Set during setup for this interface.

Upon selecting **Create Done Files**, information for the individual files will be extracted from the *PRODIMP.DAT* file, the new individual files will be created and stored as *.ACT* extension files, and the original file will be renamed to include the date and time this utility was run.

Go into the Blending module to *File / Open / Blend Ticket*. At the *Select a Blend Ticket* window, highlight the Blend Ticket you are ready to load and select **Read Blender** or choose **Edit**, then **Capture Blender**. The program will automatically import the appropriate file for this Blend Ticket and will update product quantities on the Blend Ticket to the actual amount used to blend the feed in the Repete/Sabre Feed system. The imported files will be renamed to have file extension of *.dne* and the Blend Ticket will automatically be marked as loaded.

**Note:** If the Blend Ticket contains a product not in the imported file, the *Edit a Blend Ticket* window that appears during the import process will display in the *DONE Quantity* column for the product in question, the original quantity displaying in red. This will need to be investigated and the Blend Ticket will need manually adjusted.

## Importing Blend Tickets Into Invoices

Agvance has the capability of substituting Grain Bank for products using **Manufacture Billing**. If set up, **Manuf Billing** will be available at the Invoice. When this is selected, it will cause additional line items to be added to the Invoice, which will offset the grain-related commodity line item and add a line item for the Grain Bank product which causes the customer Grain Bank account to be relieved.

Choosing **Manuf Billing** on this Invoice caused line item 9 to be added to offset line 8 and line 10 was added with the product that will relieve the Grain Bank in the Grain module.

	<Product Name>	Quantity	Unit	Level	Status	<Unit \$>	Unit	Total	Split	<%>	Your Share	Tax	Lot #	Dept ID	Prod ID	Tax Exempt Reason	Prepay Amt	Crop Code
1	B&B Dry Cow Dc21 5...	8240.000	Lbs	List		2.2458	Lbs	18505.39	1	100.0000	18505.39			12FMin	MNDCP		0.00	
2	White Salt 50# Bag	3590.000	Lbs	List		0.1045	Lbs	375.16	1	100.0000	375.16			12FSal	SWT		0.00	
3	Magox, 50# Bag	2261.000	Lbs	List		0.4160	Lbs	940.58	1	100.0000	940.58			12FMin	MNMO		0.00	
4	Calcium Sulfate 50#...	1578.000	Lbs	List		0.2260	Lbs	356.63	1	100.0000	356.63			12FMin	MNCS		0.00	
5	Rumensin 10 Gem 50...	1302.000	Lbs	List		1.6973	Lbs	2209.88	1	100.0000	2209.88			12FMed	MER10		0.00	
6	Calcium Carbonate 5...	422.000	Lbs	List		0.1030	Lbs	43.47	1	100.0000	43.47			12FMin	MNCC		0.00	
7	Seleno-Source 50# Bag	349.000	Lbs	List		2.0833	Lbs	727.07	1	100.0000	727.07			12FMin	MNCS		0.00	
8	Corn	500.000	Lbs	List		0.1365	Lbs	68.25	1	100.0000	68.25			21GrCo	Corn		0.00	
9	Formula Corn	-500.000	Lbs	List		0.1365	Lbs	-68.25	1	100.0000	-68.25			21GrCo	CorrF...		0.00	
10	Grain Bank Corn	500.000	Lbs	List		0.0000	Lbs	0.00	1	100.0000	0.00			12FBCo	GBCorn		0.00	

If intending to automatically relieve Grain Bank when invoicing, there are additional setup steps required:

1. Go to *Accounting / Setup / Location Preferences* and for each location where invoicing will be done, check the option called *Allow Manufactured Inventory Detailed Billing*.
2. From the same *Accounting / Setup / Location Preferences* window, the appropriate Price Level must be selected from the drop-down so the offsetting line items added on Invoices will be at the desired amount. (This Price Level setting most likely should be set to list.)

Because this functionality does not look at the products exposed on the Invoice but instead looks at the products set up in the formula for the exposed product, some additional setup of products is required.

1. The products being added are the ones that will show as the negative lines on the Invoice.
2. Either add a product for each product to be substituted (i.e. Whole Corn, Cracked Corn, Rolled Corn, Flakes, Ground, etc) or alternatively add only a single offset product for each commodity (Corn).

There are two downsides of only having one product per commodity:

1. Only one Price Level may be set up to automatically come into the Invoice as the offset to the product being substituted by Grain Bank (i.e. the automatically added price for the negative corn line will be the same whether the product on the Invoice that Grain Bank is replacing is Cracked Corn or Flaked Corn).
2. The product name displayed on the Invoice for the offset will be the same whether it is substituting for Cracked Corn or Flaked Corn.

If neither of these issues is a concern, it is recommended to only add one offset product per commodity.

The offset product will be set up much like the original product. It should be in a non-inventoried department (probably the same department as the product it is offsetting). It should be inventoried in the same unit of measure (i.e. likely pounds). It should have the same or similar product name (this will display on the Invoice on the offset lines).

The original product (the one showing up in Plans and Blends and exposed on the Invoice when importing from Blends) will need a manufactured formula set up using the newly added offset product as the raw product in a 1 : 1 ratio and the formula set to relieve inventory at billing. The original product should also have the commodity reference removed.

The offset product should have the commodity reference added.

Ongoing Management:

- It will be necessary to manage the Price Level for each of the offset products to keep them current with the price set on the actual products used in the formula. Otherwise, the pricing on the Invoice will need edited to get the prices on the original product and the offset product to match.

Use on the Invoice:

- When invoicing a customer with Grain Bank, **Manuf Billing** must be selected to get the offsetting lines to populate on the Invoice. If there is no available Grain Bank, this will not affect the Invoice.