

Combo Blend Order Utility

Last Modified on 05/18/2026 3:41 pm CDT

Combine multiple Blend Tickets with the same Products, Rate/Acre, Crop Codes, Lot Numbers, and Ship From Locations into one Blend order. Batches can then be created depending on the truck's capacities, then the actual amount of Product loaded in the trucks per batch can be input.

Once the batches have been created and the actual amount of Product per batch has been entered, the information can be imported into the Blend Tickets.

Selecting Tickets to Combine

1. In the Blending module, go to *Edit / Combo Blend Order*.
2. On the *Add / Edit Combo Blends* screen, choose **Add**.
3. On the *Select a Blend Ticket* screen, select a Customer or enter a *Ticket #*. Highlight a Field from the *Select a Field For...* section and choose a Blend Ticket from the ticket grid. Select **OK**.
4. Highlight the next ticket to be added to the order then select **OK**. Repeat until all necessary tickets are selected, then select **Cancel**.

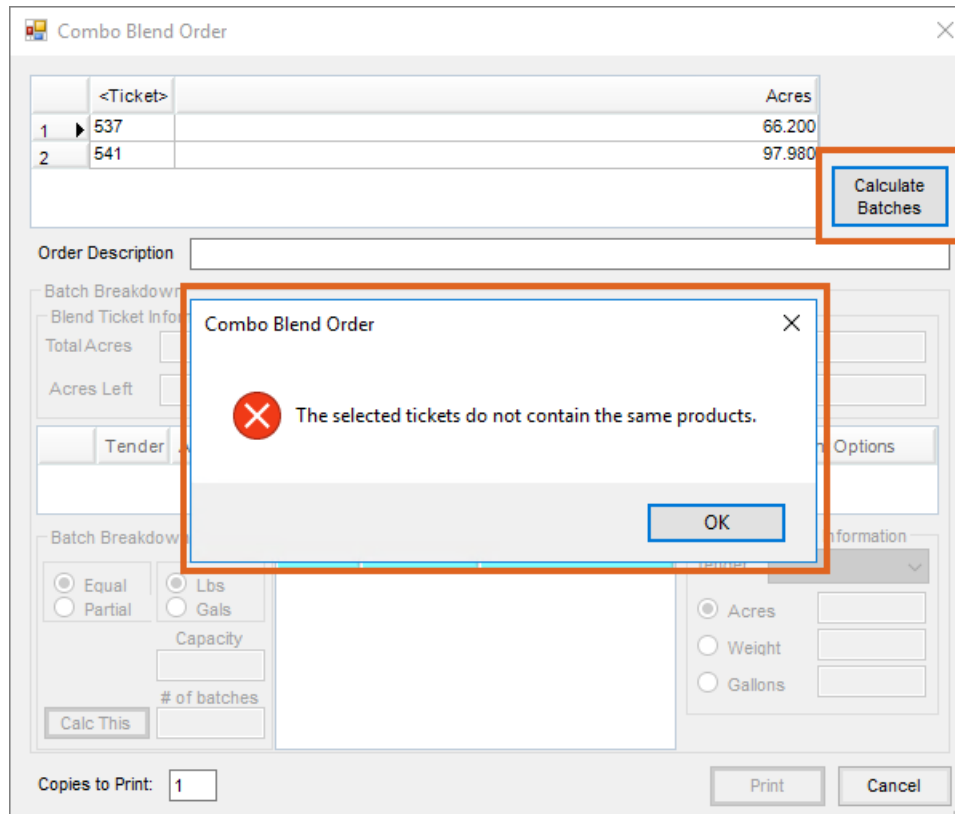
Note: The Blend Tickets that are being combined to make the order will need to have their respective Product Set's *Blender Type* set to *SSI Manual Entry*. This ensures that the new Product totals can be imported into the individual Blend Tickets later.

The screenshot shows the 'Select A Blend Ticket' dialog box. It is divided into two main sections. The left section, 'Select a Customer', contains a list of customers with 'Anderson Barry' selected. The right section, 'Select a Field For Anderson Barry', contains a list of fields with 'BA-01' selected. Below the right section is a grid of tickets with columns 'Ticket', 'Location', 'Acreid', 'Planid', and 'Comr'. The ticket '541' is selected in this grid. At the bottom, there are input fields for 'Customer Name', 'Customer Location' (set to '00MAIN'), 'Ticket#' (set to '541'), and 'Location' (set to '00MAIN'), along with 'Find', 'OK', and 'Cancel' buttons.

Combining the Tickets

1. The *Combo Blend Order* screen displays the selected Tickets in the grid at the top of the window. Choose **Calculate Batches**.

2. The consistency of the tickets is verified. If the Product properties do not match, *The selected tickets do not contain the same products* screen message displays.



3. If the tickets match, the Blend Tickets are combined for the Order. Review the *Blend Ticket Information* displayed in the *Batch Breakdown* grid.

Creating Batches

1. In the *Enter the Truck Information* section, select the *Tender* from the drop-down. The default capacity for the truck or the remaining balance displays.
2. Choose the desired *Blender Capacity* on the left. In this case, the *Blender Capacity* is set to 9999999999. To limit the capacity, in the *Batch Breakdown* section, select *Equal* or *Partial* and *Lbs* or *Gals*. Then, enter the *Capacity* or *# of batches* and select **Calc This**. The grid updates and displays the number of *Batches*, *Gallons*, and *Acres*.

Combo Blend Order

| | <Ticket> | Acres |
|---|----------|---------|
| 1 | 543 | 107.980 |
| 2 | 544 | 107.980 |

Calculate Batches

Order Description

Batch Breakdown

Blend Ticket Information

Total Acres: 215.960 Total Lbs: 431920.000 Total Gallons: 40675.640

Acres Left: 209.600 Total Lbs Left: 419200.000 Total Gallons Left: 39477.832

| | Tender | Acres | Weight | Volume | Date Stamp | Time Stamp | Product Totals | Reprint Options |
|---|-----------|-------|-----------|----------|------------|-------------|----------------|-----------------|
| 1 | ▶ Case150 | 6.360 | 12720.000 | 1197.808 | 05/02/2026 | 03:40:00 PM | View | Batch Ticket |

Batch Breakdown

Equal Lbs
 Partial Gals

Capacity: 999999999

of batches: 1

Calc This

Copies to Print: 1

Print Cancel

Enter the Truck Information

Tender:

Acres: 6.360
 Weight: 12720.000
 Gallons: 1197.808

3. Select **Print**. The *Combination Blend Ticket* PDF displays. This printout includes the batch breakdown, the blend order number, and the batch number respectively. For instance, if printing out the first batch made for the first Combo Blend Order in the system, the number at the bottom of the printout would be 1-1.

Capture the Product Totals

1. Once a truck is filled, select the gray **View** button in the *Product Totals* column for the desired batch. Once the Product Totals have been entered, the button will display in red. In this case, the second batch needs the Product Totals entered.

Combo Blend Order

| | <Ticket> | Acres |
|---|----------|---------|
| 1 | 543 | 107.980 |
| 2 | 544 | 107.980 |

Calculate Batches

Order Description

Batch Breakdown

Blend Ticket Information

Total Acres: 215.960 Total Lbs: 431920.000 Total Gallons: 40675.640

Acres Left: 203.240 Total Lbs Left: 406480.000 Total Gallons Left: 38279.939

| | Tender | Acres | Weight | Volume | Date Stamp | Time Stamp | Product Totals | Reprint Options |
|---|---------|-------|-----------|----------|------------|-------------|----------------|-----------------|
| 1 | Case150 | 6.360 | 12720.000 | 1197.893 | 05/02/2026 | 03:40:00 PM | View | Product Totals |
| 2 | Case150 | 6.360 | 12720.000 | 1197.808 | 05/02/2026 | 03:43:00 PM | View | Batch Ticket |

Batch Breakdown

Equal Lbs
 Partial Gals

Capacity: 999999999

of batches: 1

Calc This

Enter the Truck Information

Tender: [Dropdown]

Acres: 6.360
 Weight: 12720.000
 Gallons: 1197.808

Copies to Print: 1

Print Cancel

2. On the *Capture Product Totals* screen, enter the individual product weights in the *Blended* column and **Save**.

Capture Product Totals

| | Product Name | Blended | UOM | Dept ID | Prod ID |
|---|----------------|---------|-------|---------|-----------|
| 1 | 32-0-0 | | Lbs | LFrt00 | 32-0-0 |
| 2 | Water | | Lbs | LFrt00 | Water |
| 3 | Custom Liqu... | | Acres | App100 | Sidedress |

Total Weight: 0.000

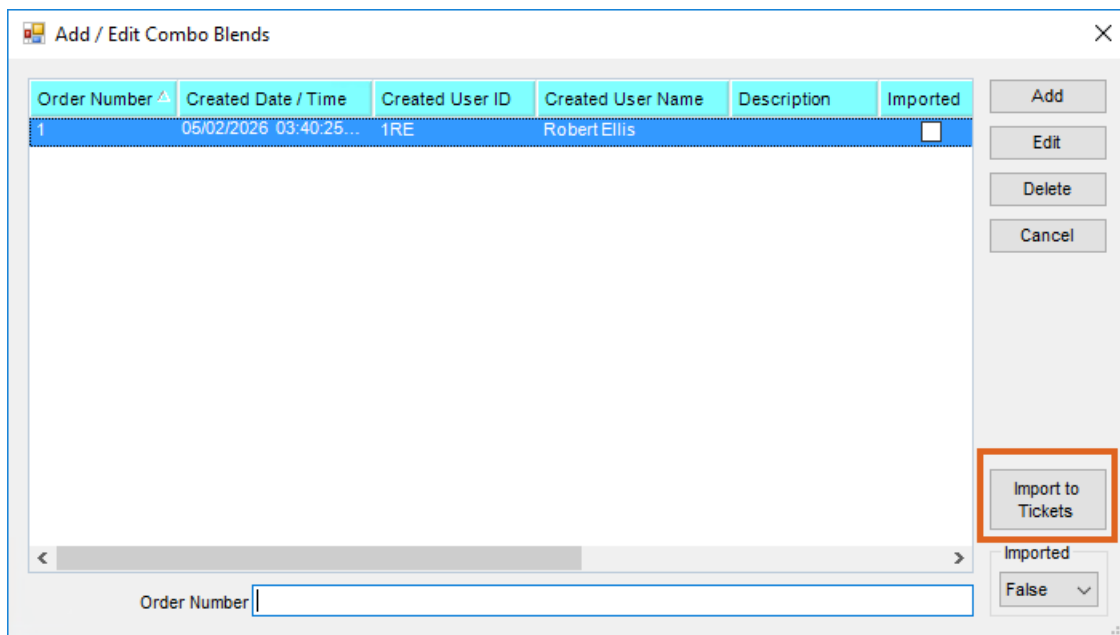
Print on Save

Save Cancel

3. Once the Product Totals have been captured for each batch, that information can be imported into the Blend Tickets.

Import to Tickets

1. At *Blending / Edit / Combo Blend Order*, select **Import to Tickets** to import the new Product totals to the individual Blend Tickets.



2. On the *Select a Blend Ticket* Screen, choose one of the original Blend Tickets and select the **Read Blender** button. The *Edit to Blender Records* screen will appear to review the data and select **OK**. Additionally, the Blend Ticket can be opened to select the **Capture Blender** button. It is also an option to navigate to *Blending / Edit / Import Automated Blender Done Files*, choose the *Review Single Ticket* or *Review Quantities* option, choose the Blend Tickets to update, and select **OK**.
3. The ticket is marked as loaded and the inventory is updated.