

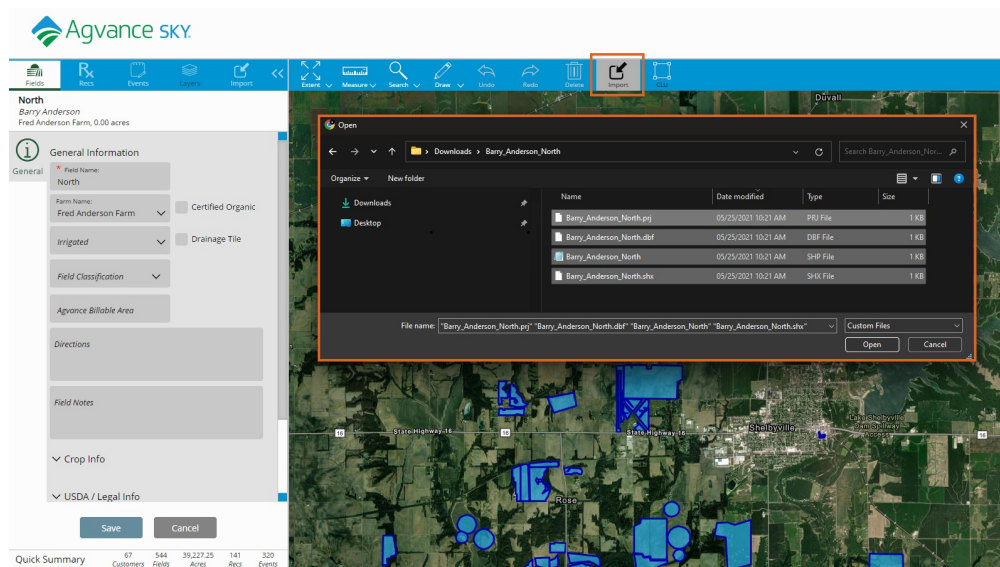
Importing or Drawing a Field Boundary - SKY Mapping

Last Modified on 06/18/2026 8:00 am CDT

Field boundaries can be imported as a shape file or manually drawn using the SKY Mapping drawing tools. A boundary must be added to the Field before saving.

Importing a Boundary

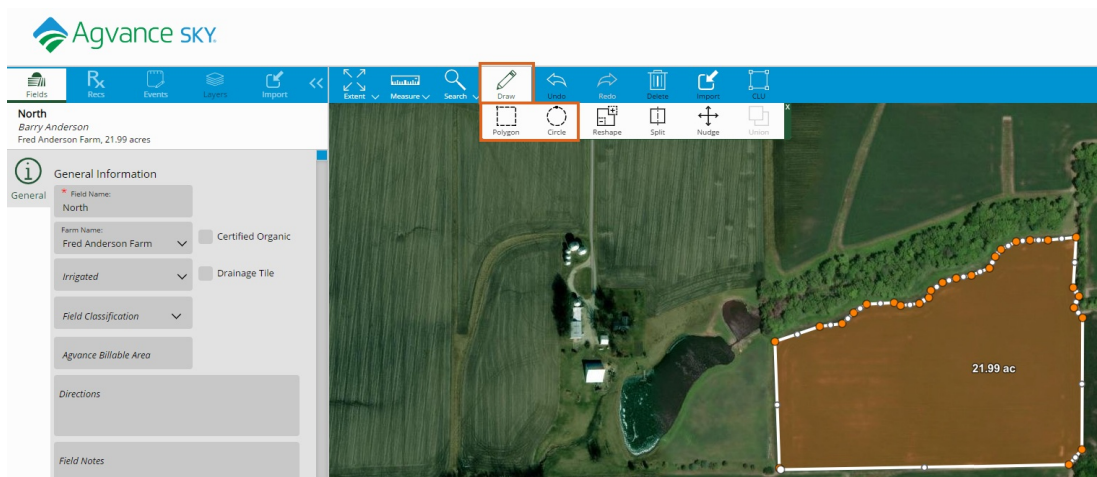
1. Select **Import**.
2. Select the shapefile for the Field being added, and choose **Open**.



3. Make any needed boundary adjustments and select **Save**.

Drawing a Boundary

1. Select **Draw**.
2. Choose the *Polygon* or *Circle* tool, and trace around the field boundary.



3. Double-click to close the boundary.
4. Select **Save**.