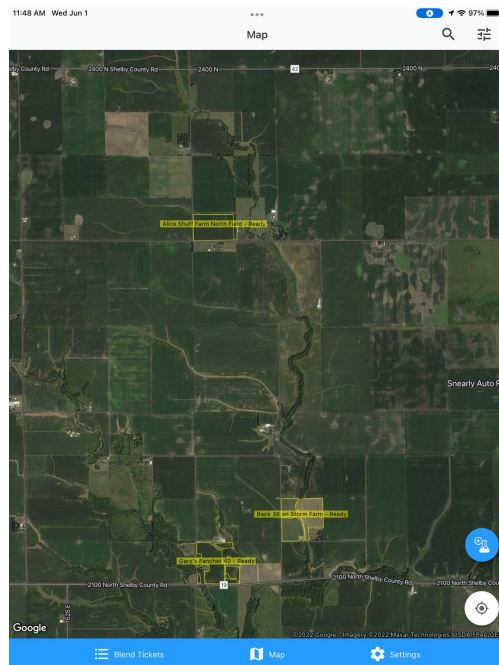


Map - Inform

Last Modified on 06/01/2022 11:51 am CDT

The *Map* view displays field boundaries for the job.



Fields can also be marked with the appropriate crop technology to help battle misapplication and drift issues by selecting the **Blue Chemistry Beaker** icon found in the lower right-hand side of the window. The pin can be selected to change the location, delete the pin, or edit the Crop Chemistry information.

Identify the *Crop Chemistry*, the *Expiration Date* and the number of pins to add. When done, select **Choose Location** in the upper right-hand side of the window. On the map view, drag and drop the pin to the desired location. These technology flags are then available in the Apply app giving the applicator vision of this information.

11:46 AM Wed Jun 1

Choose Location

97%

< Map

Crop Chemistry

Crop Chemistry

Pick Chemistry

Expiration Date

Pick a Date

Pins: 1

-

+

ADDED BY

Name

Anna Admin (SSI)

Email

OPTIONAL INFORMATION

Owner

Owner Phone Number

Notes

Blend Tickets

Map

Settings