

Farms

Last Modified on 04/02/2026 11:09 am CDT

Farms may be established to help organize a Grower's Fields. When this relationship is in place, they may be used to filter or select a subset of Fields on some reports and transactions. Farms are required in the Mapping module.

Navigate to *Hub / File / Open / Farms*.

Farms can also be seen in [Agvance SKY Customer](#).

General

Any split arrangements established here may optionally be copied to new Fields associated with the Farm, or the Field split arrangements may be manually entered.

The screenshot shows the 'Edit A Farm' window with the 'General' tab selected. The window contains the following elements:

- Customer Information:** A dropdown menu showing '<Customer>' with 'AndBa' selected, and a text field containing 'Barry Anderson'.
- Farm ID:** A text field containing 'SouthFar'.
- Description:** A text field containing 'South Farm'.
- Table:** A table with columns for '<Customer>', 'Standard', 'S-2', 'S-3', and 'C'. The first row shows '1', 'AndBa', '100.0000', '100.0...', '10...', and 'Ar'.
- Farm Notes:** A large text area for entering notes.
- Split Arrangements:** A section with three dropdown menus labeled 'S-1', 'S-2', and 'S-3'. 'S-1' is set to 'Standard Arrangement', while 'S-2' and 'S-3' are set to a downward arrow.
- Buttons:** 'Attributes', 'Classifications', 'Map', and 'Attachments' are located at the bottom left. 'Save' and 'Cancel' are at the bottom right.

- **Customer** – Enter the primary Grower's Customer ID by double-clicking in the field to display the *Select Customers* window. Each Farm must have a valid Customer that exists in the Customer file.
- **Farm ID** – Enter a Farm ID up to eight characters long. The same Farm ID may be used for several Customers, but a single Customer's Farms must all have unique Farm IDs.
- **Description** – Enter a description of the Farm. This description could be something meaningful to the customer.

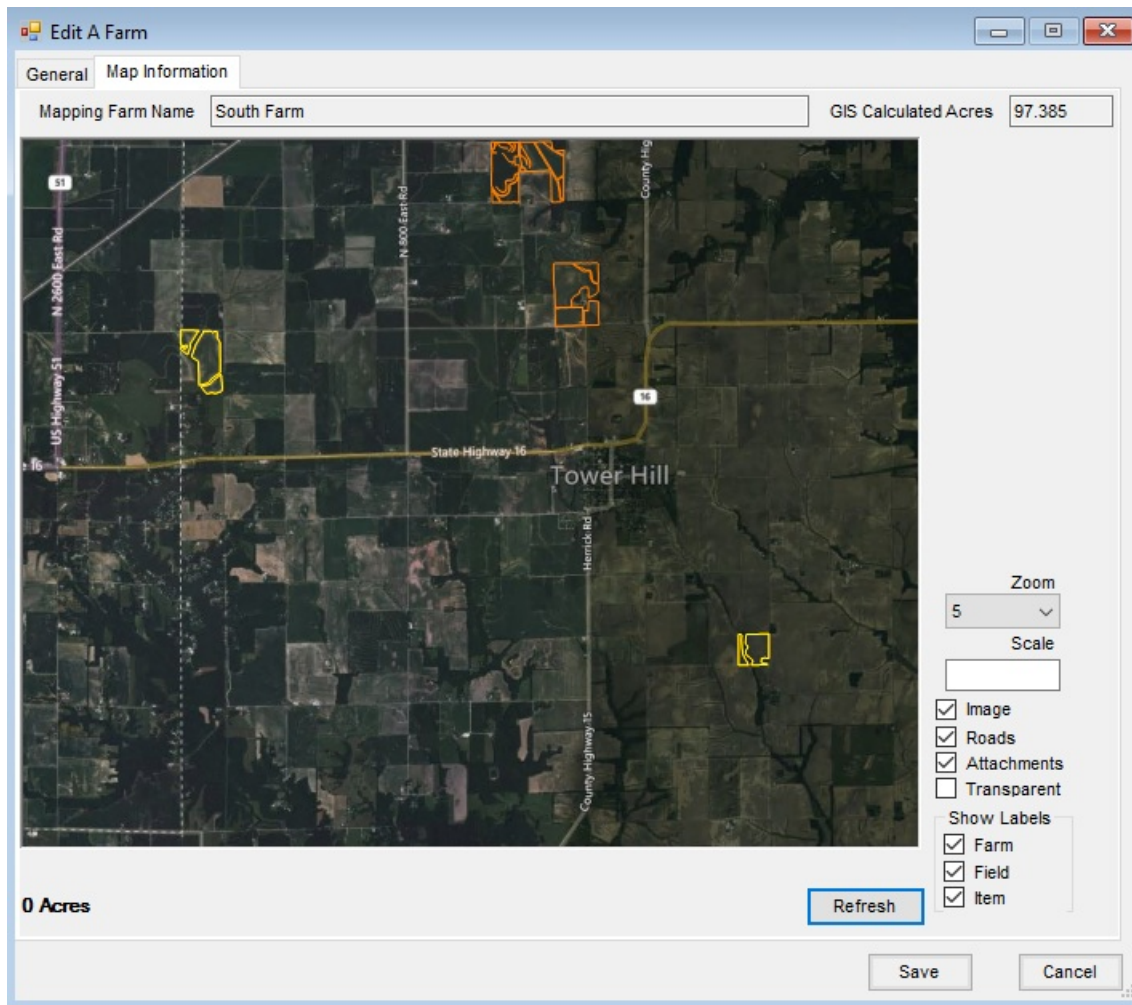
- **Customer Split Grid**

- **Customer** – Double-click to select the Customers involved in this Farm. The *Customer Name* also displays in this grid. It is suggested to list the Grower first. In the *Standard* column, enter each Customer's most common split percentage. In the *S-2* column, enter the secondary split arrangement and in the *S-3* column, the third arrangement. Split arrangements are set up at *Setup / Bill Split Arrangements*. The columns must add up to 100 percent.
- **Split Arrangements** – These predefined split arrangements are provided to help default the line item splits. For more on the setup of split arrangements, see [Bill Split Arrangements](#).

Note: Farm splits may be used to make Assembly Splits in Grain.

- **Farm Notes** – These optional notes print on the Farm Reference List found at *Hub / Reports / Field Reports*.
- **Attributes** – Select this option to add an Attribute for the Farm. Attributes are set up at *Setup / Company Preferences* on the *Farm* tab.
- **Classifications** – Select this option to choose Classifications for the Farm. Classifications are set up at *Setup / Company Preferences* on the *Farm* tab.
- **Map** – When this option is selected, a window displays to view a map of the Fields for the Farm selected.
- **Attachments** – Optionally upload attachments to this Farm file. Attachment names are validated to prevent invalid characters.

Map Information



Farm maps saved in Agvance Mapping are available to view on this tab. This *Map Information* tab is only available if there are Fields with boundaries in Mapping. Select options on the right depending on how it is preferred to view the map. Choose **Refresh** to have the map reflect those options.