

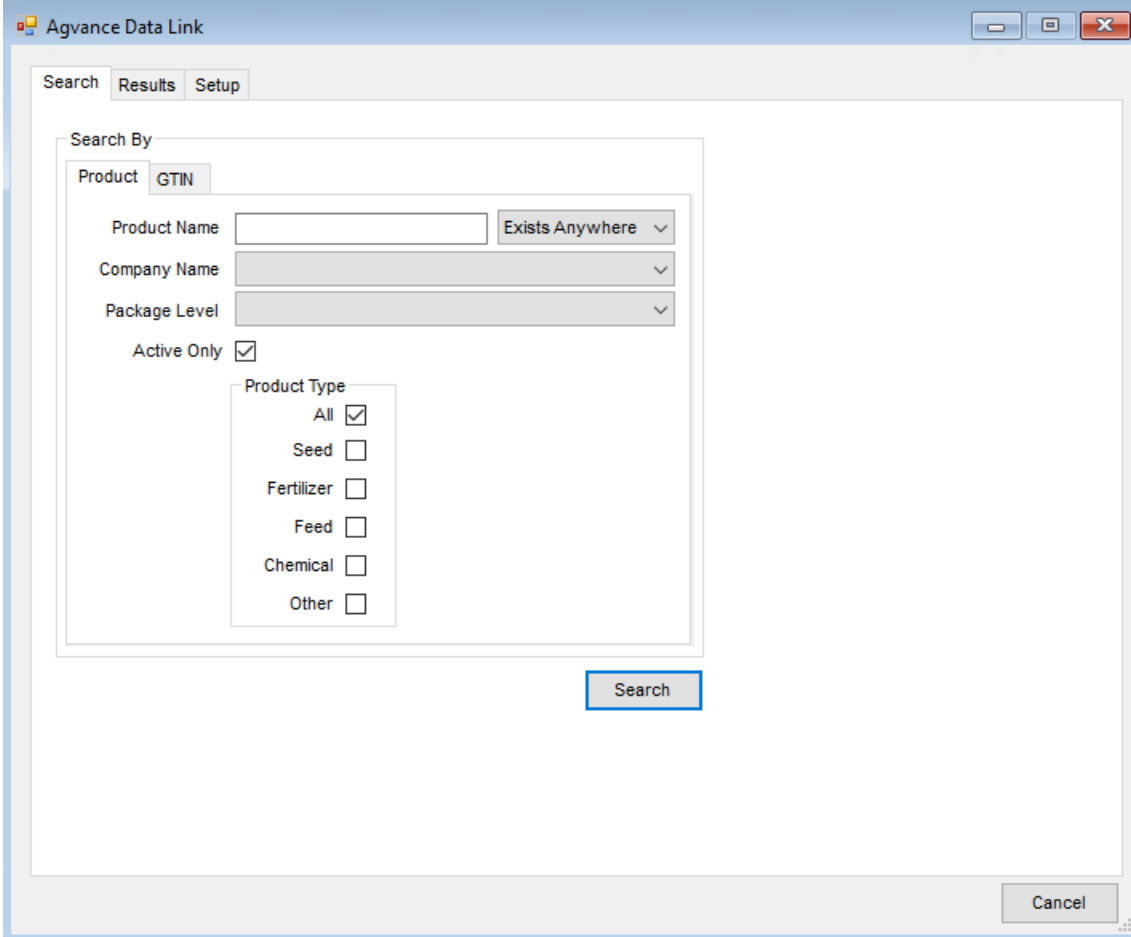
Agvance Data Link

Last Modified on 12/16/2024 1:22 pm CST

The Agvance Data Link import, found at *Hub / Transfers / Import / Agvance Data Link*, provides a database of product information that may be used to populate the required data fields, other data fields, and update some existing data fields in Agvance. This data is sourced from an industry-wide database containing thousands of products uploaded by over 50 manufacturers.

Search

Optionally search by *Product* information or by using the *GTIN*.



The screenshot shows a software window titled "Agvance Data Link" with a search interface. The window has three tabs: "Search", "Results", and "Setup", with "Search" being the active tab. Inside the search area, there are two sub-tabs: "Product" and "GTIN", with "Product" selected. The search criteria include a text input for "Product Name" with a dropdown menu set to "Exists Anywhere", a dropdown for "Company Name", and a dropdown for "Package Level". There is a checked checkbox for "Active Only" and a "Product Type" section with checkboxes for "All" (checked), "Seed", "Fertilizer", "Feed", "Chemical", and "Other". A "Search" button is located at the bottom right of the search area, and a "Cancel" button is at the bottom right of the window.

Product

- **Product Name** – Enter the *Product Name*, then choose *Exists Anywhere* or *Starts With*.
- **Company Name** – Choose from a hard-coded list of companies to search.
- **Package Level** – Select from a hard-coded list of package levels.

- **Active Only** – Check the box to search only for active products.
- **Product Type** – Check the box or boxes for the type of product to search.

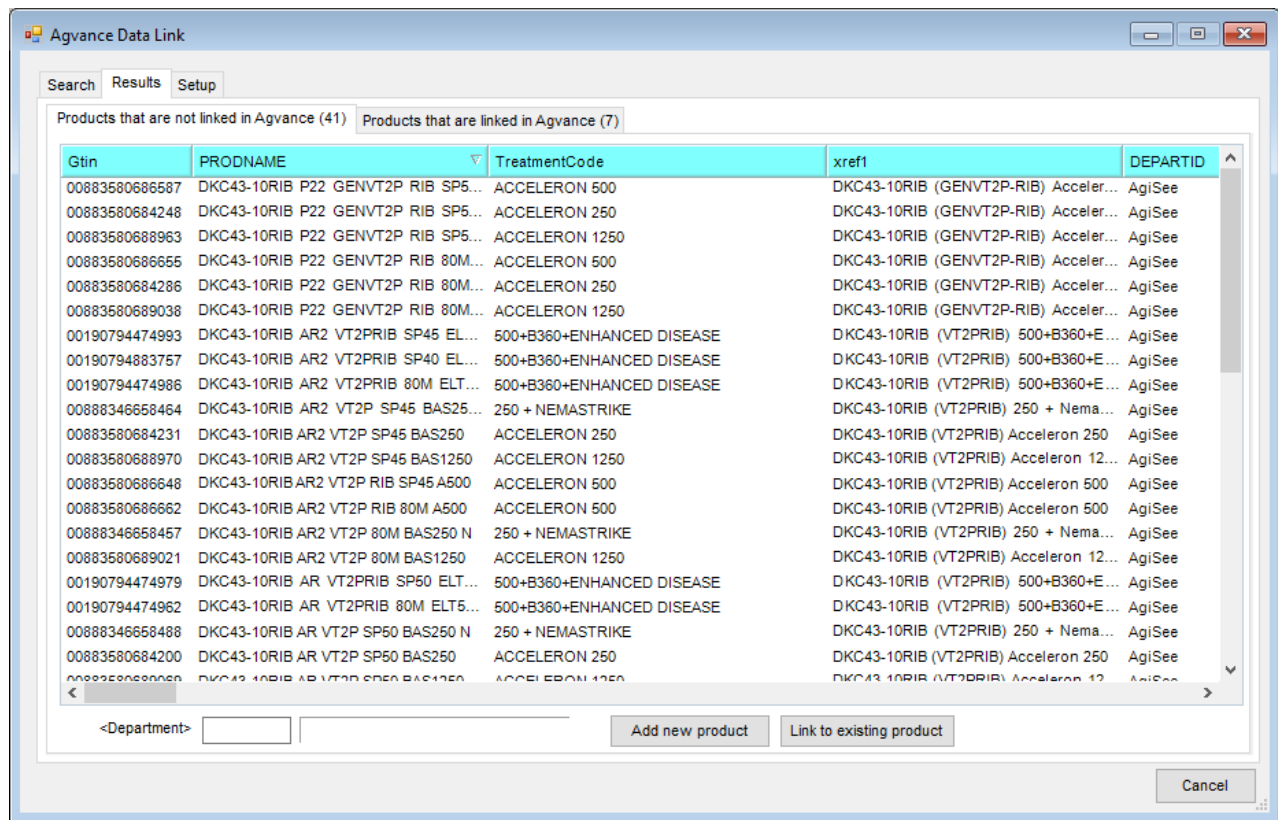
GTIN

A product can also be searched by entering the Global Trade Identification Number.

Results

Products Not Linked in Agvance

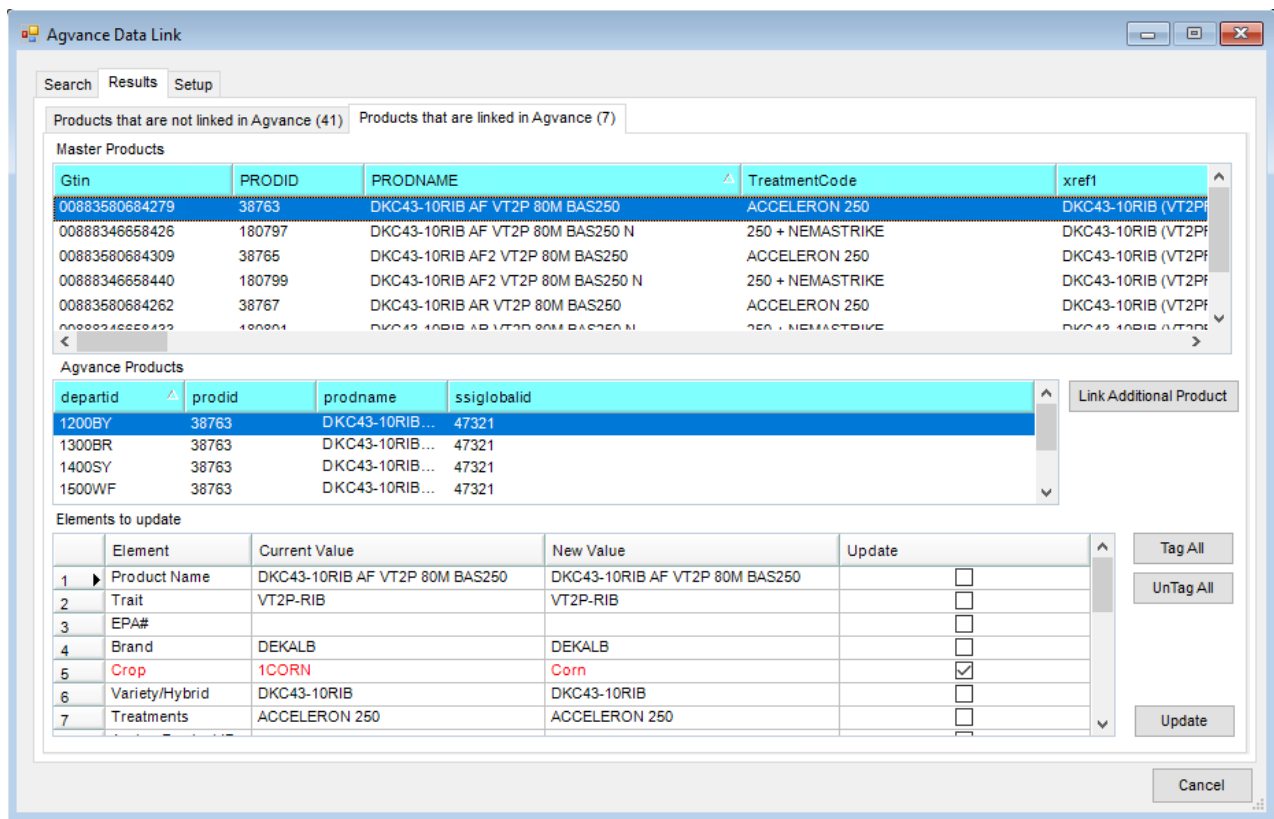
Results of the search display in this window for products that are not currently linked to Agvance Products.



- **Department** – Double-click and select the Inventory Department where the product will be added.
- **Add new product** – This adds the selected product into the Inventory Department specified in the Agvance data.
- **Link to existing product** – This links the new product to an existing product in the Agvance data.

Products Linked in Agvance

Results of the search display Products that already exist in the Agvance data in this window.



- **Master Products** – The products from the Master Database display in this window.
- **Agvance Products** – The products displayed in this window are currently in the Agvance data.
- **Link Additional Product** – This links additional products in the Agvance data to the Master product.
- **Elements to update** – Choose which elements to update by checking the boxes in the *Update* column.
- **Update** – This updates the selected elements of the current products in Agvance from the Master products information.

Setup

The screenshot shows a software window titled "Agvance Data Link" with three tabs: "Search", "Results", and "Setup". The "Setup" tab is active. It contains three input fields:

- <SST ID Attribute>: An empty text box.
- <Reporting ID>: A text box containing the text "Product UPC".
- <Reporting UOM>: A text box containing the text "UOM".

Below the input fields is a "Save" button. In the bottom right corner of the window is a "Cancel" button.

- **SST ID Attribute/Reporting ID/Reporting UOM** – Double-click to choose the corresponding attribute that was previously setup.