

Maintaining Lab Data Files

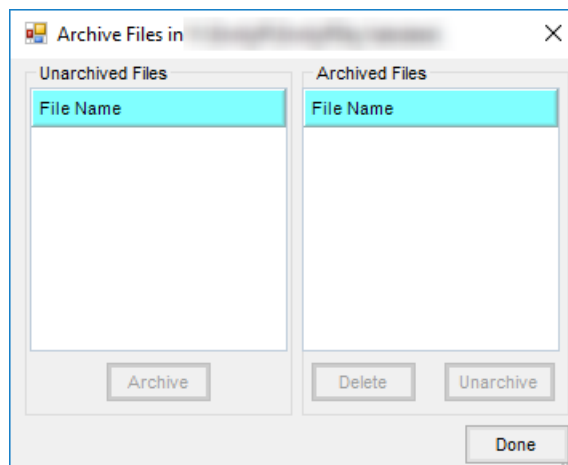
Last Modified on 09/13/2024 12:11 pm CDT

When the lab data is imported into the appropriate field files, it also remains in the \AVDATA\LABDATA directory. Eventually, many transfer files accumulate and this directory becomes cumbersome to navigate. It is possible to delete the files using DOS commands or the Windows Explorer function, but this is a tedious task if not familiar or comfortable using those tools.

The alternative is the archiving feature described below. *Archiving* in this case means that the selected files are moved to a *holding area* to be considered for deletion at a later time. Archived files do not show up at the *Import Soil Test Data* screen but may be retrieved if needed.

Archiving Lab Data

1. Go to *Hub / Transfers / Import / Soil Tests*. The files displayed in the window are the files currently in the \AVDATA\LABDATA.
2. Choose **Archive/UnArchive**. The unarchived files are displayed on the left, while the archived files are displayed in the box on the right. Double-clicking on any of the files in the left box moves them to the archived directory which is \AVDATA\LABDATA\SAV. Double-clicking on any of the files in the box on the right retrieves the files from the archived directory and places them back into the unarchived directory (\AVDATA\LABDATA).



Note: An optional and preferred method of archiving lab data files is to use the *Archive Selected File After Import* feature available at the *Import Soil Test Results* screen during the import process.

3. To erase the files in the archive directory, select the desired file within the archived directory and choose **Delete** at the bottom of the screen.

Import Soil Test Configuration

1. Select **Options** on the *Import Soil Test Results* window.
2. The *Soil Lab Import Format Number* setting identifies the data format used for the import. It is important that

this be set correctly.

Import Soil Test Options

Configuration Name: Default

Soil Lab Import Format Number: 27 User Defined

Instructions: Using the table to the right, indicate the conversion factor for each nutrient below.

Lab Sends	You Use	Factor
PPM	PPM	1
PPA	PPA	1
PPM	PPA	2
PPA	PPM	.5

PHw	1	Ca	1	BIP	1	UD	1
PHb	1	Mg	1	Sol. S	1	Ext1	1
P1	1	CEC	1	S	1	Ext2	1
P2	1	Hyd	1	Na	1	Ext3	1
K	1	%k	1	Zn	1	Ext4	1
NO3-1	1	%Ca	1	Fe	1	Ext5	1
NO3-2	1	%Mg	1	Mn	1	Ext6	1
O.M.	1	%H	1	Cu	1	Ext7	1
ENR	1	%Na	1	B	1	Ext8	1

Disallow adding new customers during import

Disallow adding new fields during import

Save Cancel Delete

3. The rest of the screen options determine whether the data is received in PPA (pounds per acre) or PPM (parts per million). Use the *Conversion Factor Table* at the top of the screen to help set this up.

User Defined Format

1. Select **Options** and choose *Soil Lab Import Format Number 27*.
2. Select **Save**.
3. On the *Import Soil Test Results* screen in the *UD Format* area, choose **Add**.
4. The *UD Format Information* window appears to enter the format information. After this is completed select **Save**.

UD Format Information

Format Name

Delimiter

Number of Heading Lines to Exclude

	Agvance	Import File
1	▶ Grower...	0
2	Field ID	0
3	Sampl...	0
4	Sampl...	0
5	Field D...	0
6	Operator	0
7	Date T...	0
8	X Cord	0
9	Y Cord	0
10	PhW	0
11	PhB	0
12	P1	0
13	P2	0
14	K	0
15	NO31	0
16	NO32	0
17	OM	0
18	Enr	0
19	Ca	0
20	Mg	0
21	Cec	0

Save Cancel