

# Product Synchronization

Last Modified on 12/09/2025 8:28 am CST

## Setup

The use of the Product Master Replication process in Agvance requires a *Product Master* location be specified in the database. This is done at *Hub / Setup / Locations* or *Accounting / Setup / Locations* on the *Profile* tab. Select the Location that will act as the Product Master location, check the *Product Master* checkbox and select **Save**.

A common practice, especially with diverse or large companies, is to set up a dedicated master location for this process. This allows for a few things. User security can be implemented to allow only certain people access to that location. It also allows for setting up a location that would have all product lines the company might handle, where there is no particular location that handles all of them.

The screenshot shows a software window titled "Edit Location - zMast" with a subtitle "zMast - MASTER PRODUCT LOCATION ONLY". The window has several tabs: "Profile", "G/L Posting", "Preferences", "Remit Address", and "Transfers". The "Profile" tab is active. It contains various input fields for location information, including "Location ID" (zMast), "Main Plant" (unchecked), "Time Zone" (dropdown), "Region" (dropdown), "Name" (zMast - MASTER PRODUCT LOCATION ONLY), "Address", "City", "State" (dropdown), "Zip", "Phone", "Fax", "Geo Code", "Cross Ref", "Inactive" (unchecked), "Territory", "IC Code", "<County>", "DUNS #", "<Country>", "F.E.I. #", "DOT Regist. #", "Pest Lic #", "Grain Dealer Lic#", "Addl Lic #", "Grain Warehouse Lic#", and "Pest Appl #". A red box highlights the "Product Master" checkbox, which is checked. At the bottom, there is a "Require Customer Agreement for Electronic Signature" checkbox (unchecked) and "Save" and "Cancel" buttons.

The next step is to make sure that the Category in the Inventory Departments is set appropriately and consistently. This is done at *Hub / Setup / Inventory Departments* or *Accounting / Setup / Inventory Departments* on the *Profile* tab. Whatever is entered here and saved becomes available in the drop-down when adding or editing the next Inventory Department.

Inventory Department Information for DFrtZM Dry Fert -Zmast

Profile | G/L Posting | Patronage | Coop Commission | Price Levels | Discount Overrides

Department ID: DFrtZM  
 Department Name: Dry Fert -Zmast  
 <Location>: zMast  
 Category: Fertilizer Dry

GL Posting Unit: Inventory  
 Blending Information: Scale Default to Use: 1  
☒ Nutrient Contributor

Billing Information:  
☒ Discount This Department  
☒ Do Not Discount Unpaid Bookings  
☐ Do Not Discount Downpay Bookings  
☐ Apply Volume discounts to Full Quantity on Down Paid Items  
☒ Print Quantity on Invoice  
☐ Log Price Overrides  
☐ Require Reason for Price Overrides

Lot Number Validation:  
 Missing Lot Num: ☒ No Checking ☐ Warn Only ☐ Stop Sale  
 Invalid Lot Num: ☒ No Checking ☐ Warn Only ☐ Stop Sale

Department Classifications:  
☐ Misc1 ☐ Misc4  
☐ Misc2 ☐ Misc5  
☐ Misc3 ☐ Misc6

Department Cross References:  
 Cross Ref1:   
 Cross Ref2:   
 Cross Ref3:   
 Cross Ref4:

☐ Auto Update Prices on Cost Change  
☐ Disallow Lot Numbers

Classifications

Import Price Levels Save Cancel

Inventory Department Information for DFrt00 Dry Fert -00

Profile | G/L Posting | Patronage | Coop Commission | Price Levels | Discount Overrides

Department ID: DFrt00  
 Department Name: Dry Fert -00  
 <Location>: 00MAIN  
 Category: Fertilizer Dry

GL Posting Unit: Inventory  
 Blending Information: Scale Default to Use: 1  
☒ Nutrient Contributor

Billing Information:  
☒ Discount This Department  
☒ Do Not Discount Unpaid Bookings  
☐ Do Not Discount Downpay Bookings  
☐ Apply Volume discounts to Full Quantity on Down Paid Items  
☒ Print Quantity on Invoice  
☒ Log Price Overrides  
☒ Require Reason for Price Overrides

Lot Number Validation:  
 Missing Lot Num: ☐ No Checking ☒ Warn Only ☐ Stop Sale  
 Invalid Lot Num: ☒ No Checking ☐ Warn Only ☐ Stop Sale

Department Classifications:  
☐ Misc1 ☐ Misc4  
☐ Misc2 ☐ Misc5  
☐ Misc3 ☐ Misc6

Department Cross References:  
 Cross Ref1:   
 Cross Ref2:   
 Cross Ref3:   
 Cross Ref4:

☐ Auto Update Prices on Cost Change  
☐ Disallow Lot Numbers

Classifications

Import Price Levels Save Cancel

The next step is to set up the Product Synchronization rules.

## Synchronization Rules

Navigate to *Hub / Setup / Product Synchronization Rules*.

When adding a Product, the program will add this new Product to all related departments and update/populate all information checked in the *Sync on Add* column. When editing a Product, Agvance will not only update all existing Products in related departments with the information checked in the *Sync on Edit* column; it will also add to any new related departments that do not have the Product set up at this time.

Setup Product Synchronization Rules

Synchronization Rules Additional Datasets

When performing an 'ADD' of a product, the program will add this new product to all related departments and update/populate all information that is checked in the 'Sync on Add' column. When performing an 'EDIT' of a product the program will not only update all existing products in related departments with the information that is checked in the 'Sync on Edit' column, it will also perform an ADD to any new related departments that don't have the product setup at this time.

Sync on Add Tag All Untag All Sync on Edit Tag All Untag All

	Data Element Name	Editable Description	Sync on Add	Sync on Edit
1	product.MANUFAC	Manufacturer	<input checked="" type="checkbox"/>	<input checked="" type="checkbox"/>
2	product.TYPECODE	NOT USED	<input checked="" type="checkbox"/>	<input checked="" type="checkbox"/>
3	product.PRODNAME	Product Description	<input checked="" type="checkbox"/>	<input checked="" type="checkbox"/>
4	product.EPAREGNUM	EPA Number	<input checked="" type="checkbox"/>	<input checked="" type="checkbox"/>
5	product.RESTRICTED	product.RESTRICTED	<input checked="" type="checkbox"/>	<input checked="" type="checkbox"/>
6	product.HAZARDOUS	product.HAZARDOUS	<input checked="" type="checkbox"/>	<input checked="" type="checkbox"/>
7	product.INVUNITS	product.INVUNITS	<input checked="" type="checkbox"/>	<input checked="" type="checkbox"/>
8	product.ReOrder	product.ReOrder	<input checked="" type="checkbox"/>	<input checked="" type="checkbox"/>
9	product.UNITWGHT	product.UNITWGHT	<input checked="" type="checkbox"/>	<input checked="" type="checkbox"/>
10	product.PACKSIZE	product.PACKSIZE	<input checked="" type="checkbox"/>	<input checked="" type="checkbox"/>
11	product.PACKUNIT	product.PACKUNIT	<input checked="" type="checkbox"/>	<input checked="" type="checkbox"/>
12	product.xref1	product.xref1	<input checked="" type="checkbox"/>	<input checked="" type="checkbox"/>
13	product.xref2	product.xref2	<input checked="" type="checkbox"/>	<input checked="" type="checkbox"/>
14	product.xref3	product.xref3	<input checked="" type="checkbox"/>	<input checked="" type="checkbox"/>
15	product.xref4	product.xref4	<input checked="" type="checkbox"/>	<input checked="" type="checkbox"/>
16	product.upacode	product.upacode	<input checked="" type="checkbox"/>	<input checked="" type="checkbox"/>
17	product.replocst	product.replocst	<input checked="" type="checkbox"/>	<input checked="" type="checkbox"/>
18	product.dryorlq	product.dryorlq	<input checked="" type="checkbox"/>	<input checked="" type="checkbox"/>
19	product.actingred	product.actingred	<input checked="" type="checkbox"/>	<input checked="" type="checkbox"/>
20	product.CrossRefID	product.CrossRefID	<input checked="" type="checkbox"/>	<input checked="" type="checkbox"/>
21	product.ConsignIN	product.ConsignIN	<input checked="" type="checkbox"/>	<input checked="" type="checkbox"/>
22	product.EDIReportable	product.EDIReportable	<input checked="" type="checkbox"/>	<input checked="" type="checkbox"/>
23	product.InActive	product.InActive	<input checked="" type="checkbox"/>	<input type="checkbox"/>
24	product.InActiveDate	product.InActiveDate	<input checked="" type="checkbox"/>	<input type="checkbox"/>
25	product.InvComment	product.InvComment	<input checked="" type="checkbox"/>	<input checked="" type="checkbox"/>

☐ Synchronize Adds only when needed for transactions  
☒ Live Product Synchronization

Save Cancel

## Synchronization Grid

- **Data Element Name** – This shows the Agvance *table.column* where the data element exists in the database.
- **Editable Description** – This gives the administrative user a place to type in a user-friendly description of what this element represents.
- **Sync on Add** – Selecting this option causes the data element to be synchronized when the product is added to other locations/departments. Notice *product.PRODNAME*, *product.INVUNITS*, *product.UNITWGHT*, and *product.PACKSIZE*, *prodprce.BILLUNITS*, and *prodprce.BILLDIV* are grayed out. These are required data elements so this forces synchronization of these data elements upon adding a new product.
  - **Tag All** – Selecting this will check everything in the *Sync on Add* column. It is typical to check everything in this column.
  - **Untag All** – All lines will be unchecked in the *Sync on Add* column upon selecting **Untag All**.
- **Sync on Edit** – A checkmark in this column causes the data element to be synchronized/updated when the product is edited at the master location and then synced up to the other Locations/Departments.
  - **Tag All** – Selecting this will check everything in the *Sync on Edit* column. It is typical to check everything in this column then go back and uncheck those elements that should remain unique to the Location or should not be overwritten by the Product Master.
  - **Untag All** – All lines will be unchecked in the *Sync on Add* column upon selecting **Untag All**.
  - **Other Considerations**
    - **Definitely Uncheck** – *prodprce.AVGCCOST*, *prodprce.LASTPURCST*, and *prodprce.EstAvgCst*.
    - **Common to Uncheck** – *product.InActive*, *product.InActiveDate*, *prodacct.SalesAccount*,

prodacct.PURCHASEACCOUNT, prodacct.FREIGHTACCOUNT, and prodacct.Purchasediscount.

**Note:** Leaving these checked may cause inventory and/or GL discrepancies.

- **Special to the Locations** – Every case is different, but an example is pricing. If the company allows Locations to have different prices, then all data fields related to pricing could be potentially unchecked.

- 
- **Synchronize Adds only when needed for transactions** – When this is checked, the *Sync on Add* rules that have been selected are only applied when adding an Inter-Company Transfer.

**Note:** This is typically unchecked. Some of the larger companies with hundreds of locations in different parts of the country use this to reduce the number of products managed at the individual locations.

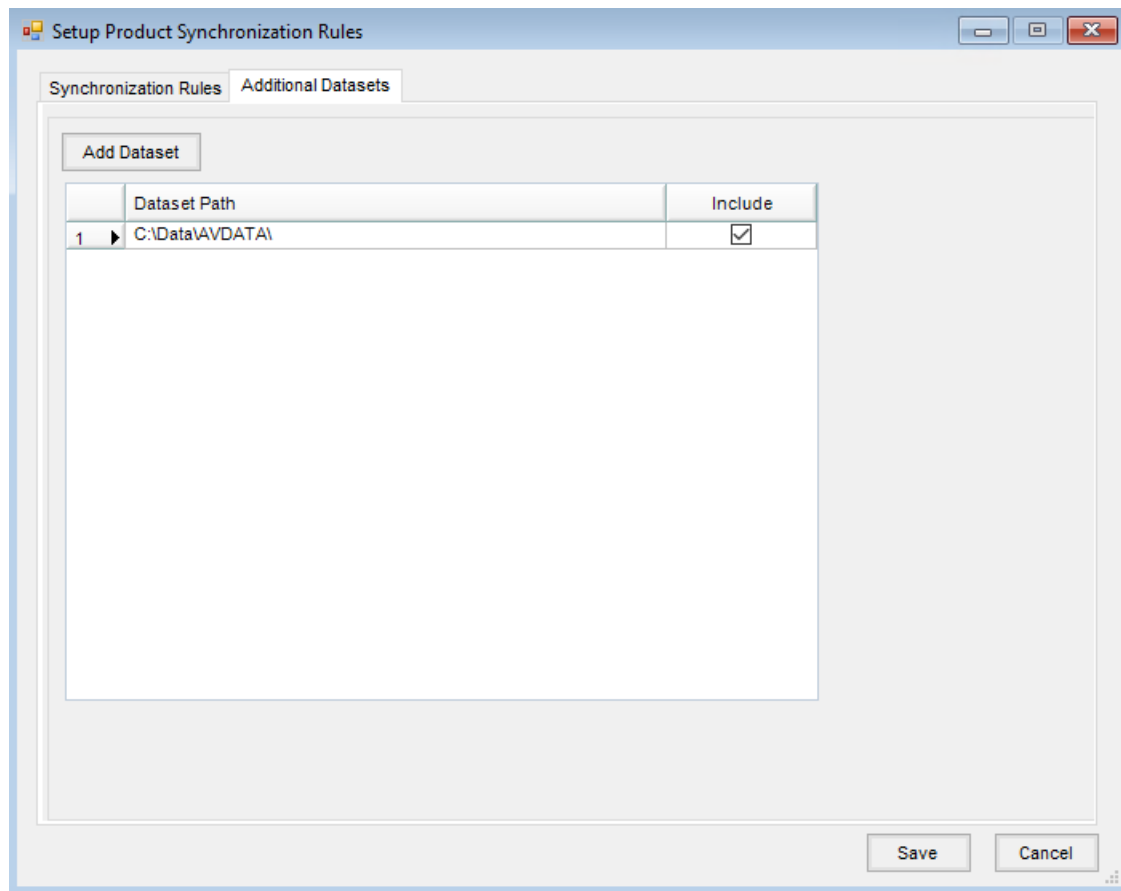
- **Live Product Synchronization** – When this is marked, the update or addition of a product at the master location syncs to the other locations/departments when the product is saved.

**Note:** This is typically checked to ensure automatic/real-time updates. With new implementations, it is typical to leave this unchecked in the early stages while building the data. Products are built in the Product Master Location over some time and when the implementation team/customer feels the setup is complete or close to complete, a Product Synchronization utility can be utilized to push the products out accordingly and then Live turned on (see the *Product Synchronization Utility* tab above).

When new Product Attributes or Classifications are added, both the *Sync on Add* and *Sync on Edit* will be defaulted to unchecked. The Attributes and Classifications are always at the bottom of the grid. When adding a new Attribute or Classifications, it is a good idea to come back to review and set appropriately.

## Additional Datasets

This is an optional step and is used when a customer has multiple companies that handle the same products. This allows for maintaining in one dataset and updating the others.

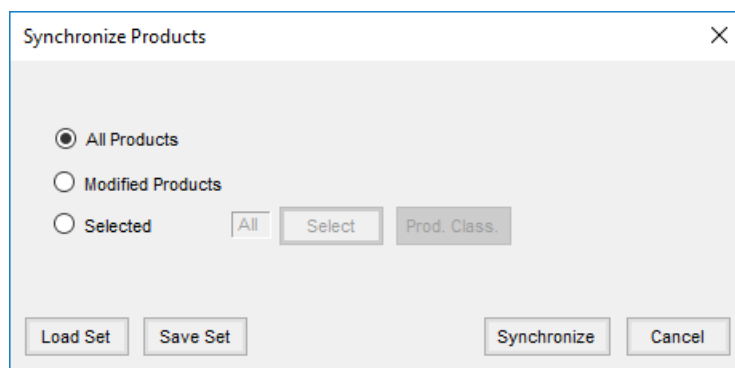


- **Add Dataset** – Use this option to choose additional datasets to apply the product synchronization rules. Once an additional dataset is selected, it appears in the grid with the option to mark to include.

## Product Synchronization Utility

This utility can be used to initiate a manual sync of all Products, edited Products, or a select few Products whenever the Live Product Synchronization option is unchecked.

1. Go to *Hub / Utilities / Admin Utilities* and then *Hub / Synchronize Products*.
2. Select the Products to be synchronized.



- **All Products** – This will go through all Products currently at the Product Master Location and initiate

both the Add and Edit rules. This is typically used on new implementations after building the main Product list and when ready to push out to all the other Locations.

- **Modified Products** – This is typically used by companies that do not have *Live Product Synchronization* turned on.
- **Selected** – This allows for a combination of Products to target the synchronization whether by selecting them or selecting Product Classifications. This is usually used (but not limited to) when a new Product line is introduced, an import of new Products is done, batch editing of Products, etc.

3. Select **Synchronize** and the synchronization occurs.

If editing Products from the Product Master Location with the Batch Edit Products utility (*Admin Utilities / Hub / Batch Edit Products*), an option is available to initiate the synchronization from there as well.

