

Energy Dispatch Jobs

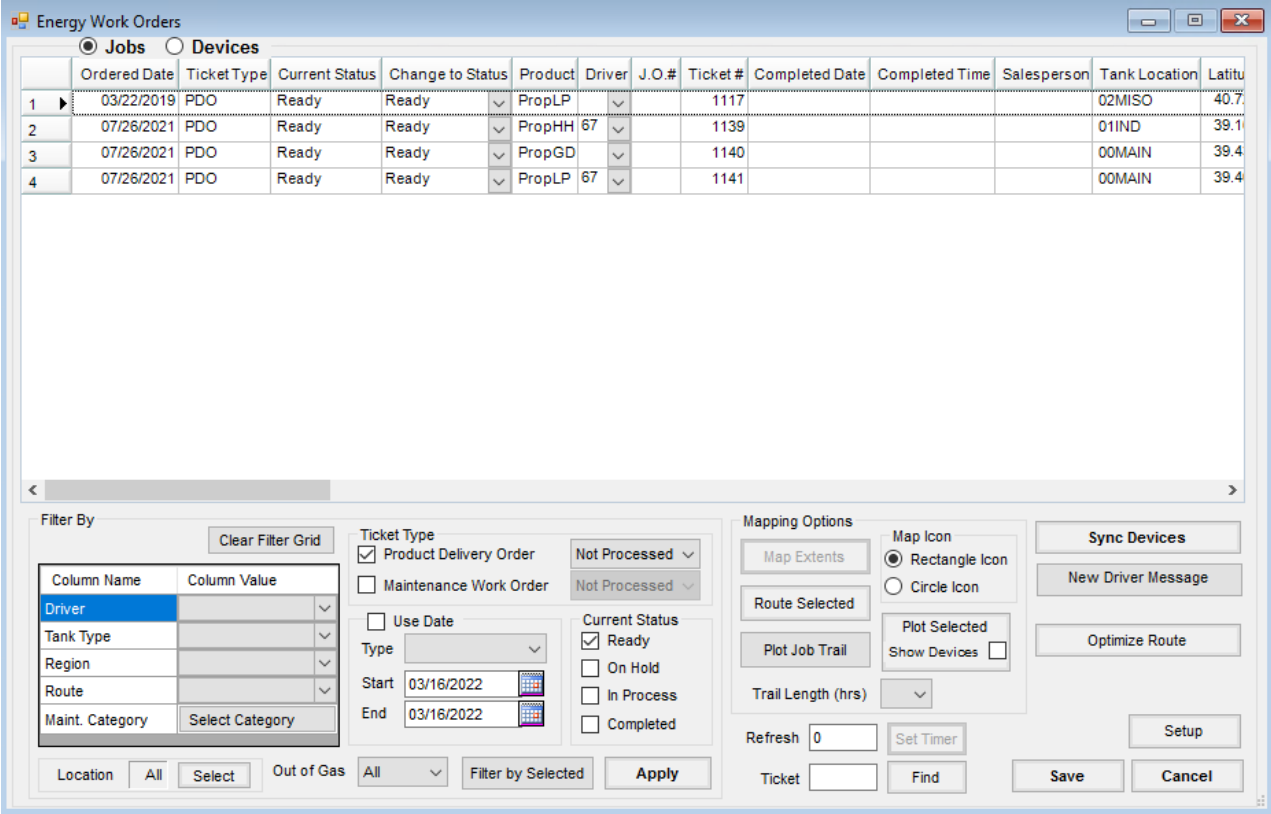
Last Modified on 03/17/2022 9:09 am CDT

Jobs

Jobs are defined as Product Delivery Orders or Maintenance Work Orders entered through the Energy module.

Product Delivery Orders and Maintenance Work Orders show up in the *Energy Work Orders* window. The tickets that show in the work order window are filtered using the criteria selections at the bottom of the window.

If a customer has a valid tank monitor percentage, that percentage is available in the grid once filters are applied in the *Monitor %* column.



Current Status

This filtering area allows the selection of a set of job statuses to be shown in the grid.

Color of Jobs in Grid

Geo-referencing allows the jobs listed in the *Energy Work Orders* window to be displayed on a map for easier scheduling. The color of the job in the grid indicates the source from which the geo-referencing is compiled.

- **Black** – Black indicates the job is geo-referenced using the lat/lon in the tank file.
- **Blue** – Blue indicates the job is geo-referenced using the lat/lon assigned to the customer address.

- **Red** – Red indicates the job is not geo-referenced.

Tickets

Dispatch displays Product Delivery Orders and/or Maintenance Work Orders. Tickets may be filtered by the following statuses using the drop-down:

- **Not Processed** – These are undelivered and delivered tickets not yet invoiced.
- **Processed** – These are completed tickets which have been invoiced.