

Blend to Stock

Last Modified on 11/12/2024 4:12 pm CST

This feature is designed to formulate a blend to inventory (for stockpile) instead of invoicing the resulting blended material. It combines the power of the Blending module and the manufactured blend function. There are several uses for Blend to Stock functionality including bulk liquid fertilizer, bagged feed, and bagged fertilizer.

From Weights

1. Create an unloaded Blend Ticket to use for mixing material.
2. Navigate to *Blending / Edit / Blend to Stock / From Weights* and highlight the desired ticket. Select **OK**.
3. On the *Edit Blend to Stock* window, enter the overall net weight in the *Gross* column or the *Gross* and *Tare* weights in the appropriate columns. Choose **Apply** to prorate it over the analysis Products. Choose **OK**.

Load	Gross	Tare	Net
1	8372	4280	4092
2			
3			
4			
5			

Product	Old Weight	New Weight	U/Wght	Analy	Fee	Scale	Prorate
1 Triple (0-46-0)	771.000	776.313	1	Yes	No	<input checked="" type="checkbox"/>	<input checked="" type="checkbox"/>
2 Dap (18-46-00)	2533.000	2550.451	1	Yes	No	<input checked="" type="checkbox"/>	<input checked="" type="checkbox"/>
3 Potash (0-0-60)	760.000	765.236	1	Yes	No	<input checked="" type="checkbox"/>	<input checked="" type="checkbox"/>

4. On the *Capture Blend to Stock Amount* window, double-click in the *Product* column to select an existing Product. Select **New Product** to add a new Product, enter the information, and select **Save**.

Name
1 Triple (0-46-0)
2 Dap (18-46-00)
3 Potash (0-0-60)
4 Dry Spread

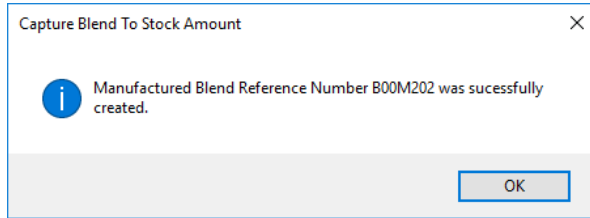
Rate to Blend Ratio	Blend to Inventory Ratio	Billing Divisor	Package Size	Unit Weight
1.0000000	1.0000000	1.0000000	1.0000000	1.0000000

N	P	K	S	UD	C
11	37	11	0	0.00	0

M	Z	F	M	C	B
0	0.00	0.00	0.00	0.00	0.00

5. After the Product is selected, indicate the *Quantity* of the final Product produced, and select **Save**.
6. A message indicates the Manufactured Inventory was created successfully and provides a reference number.

Choose **OK**.

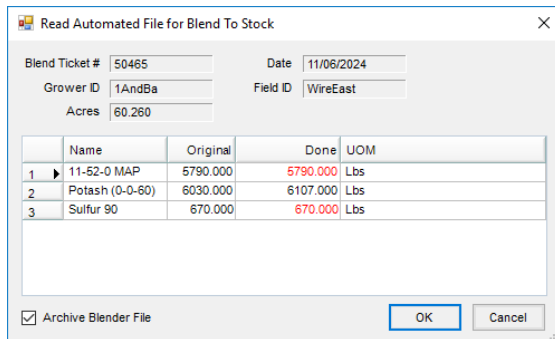


7. The Blend Ticket is marked as *Processed* and the *Amount on Hand* of the selected Product is increased by the *Quantity*.

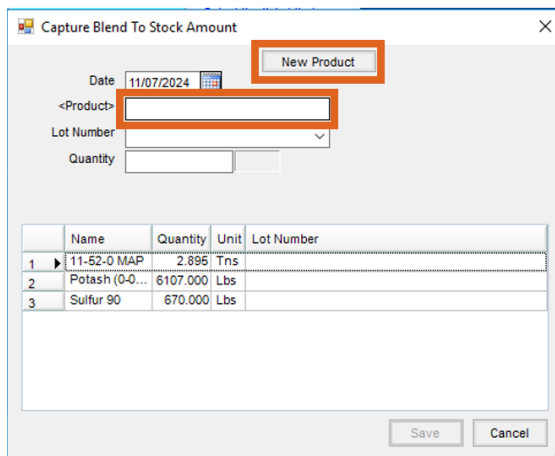
From Automated Blender File

Only files that have been sent to the Automated Blender, processed, and sent back to Agvance are available to import.

1. Navigate to *Blending / Edit / Blend to Stock / From Automated Blender File*. Highlight the Automated Blender File Ticket to import and select **OK**.
2. On the *Read Automated File for Blend To Stock* window, verify the displayed values. The *Done* weights can be edited at this window. Select **OK**.



3. On the *Capture Blend To Stock Amount* window, double-click in the *Product* column to select an existing Product. Select **New Product** to add a new Product, enter the information, and select **Save**.



4. After the Product is selected, enter the *Quantity* of the final Product produced. Choose **Save**.

Capture Blend To Stock Amount

Date: 11/07/2024

<Product>: Blended Dry Fertilizer

Lot Number: [dropdown]

Quantity: [input] Lbs

Buttons: New Product, DryM, Blended

	Name	Quantity	Unit	Lot Number
1	11-52-0 MAP	2.895	Tns	
2	Potash (0-0...	6107.000	Lbs	
3	Sulfur 90	670.000	Lbs	

Buttons: Save, Cancel

5. A message indicates the Manufactured Inventory was successfully created and a reference number is provided. Choose **OK**.

Posting Notes

- **Inventory Detail** – An inventory record is made for the finished product and each raw material for an audit trail of inventory activity.
- **Inventory Amount on Hand** – The product's *Amount on Hand* quantity is updated for each of the products involved. The quantity is increased for the finished product and decreased for each raw material.
- **Finished Product Cost** – The blended product's *Average* and *Last Cost* is updated based on the cost of the raw materials.
- **General Ledger:**

General Journal Entry	Debits	Credits
Total cost of all raw materials	Cost of Sales for finished product	
Each raw material cost		Cost of Sales for each raw material product
If using Transactional Inventory valuation		
Total cost of all raw materials	Inventory Asset for finished product	
Each raw material cost		Inventory Asset for each raw material product