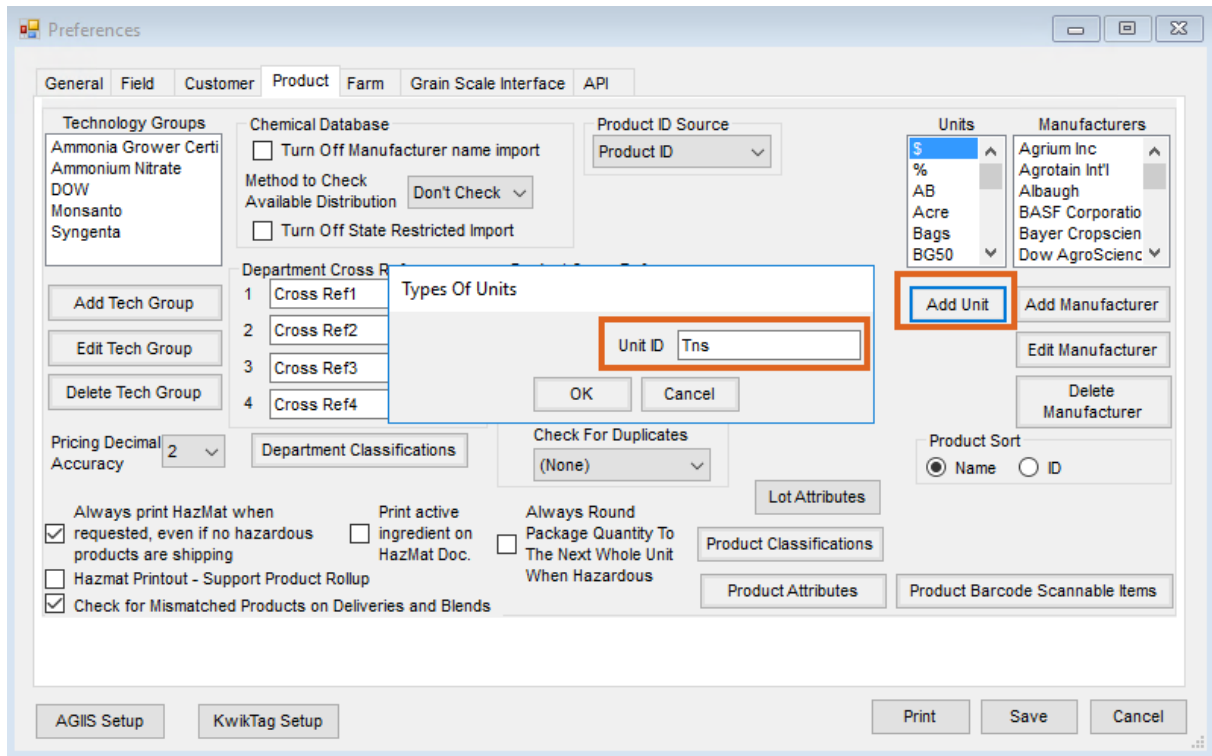


Convert Pounds to Tons Automatically

Last Modified on 03/06/2024 2:46 pm CST

Agvance automatically converts pounds to tons on Delivery Tickets if the *Inventory Units* on the Product is set to *Tns*.

1. On the *Product* tab at *Hub / Setup / Company Preferences*, select **Add Unit**.
2. Enter *Tns* as the *Unit ID*.



3. When adding or editing a product, select *Tns* for the *Inventory Units*.

Product Information for Dry Fert -00 / Potash (0-0-60)

Profile Safety Blend Setup Pricing Tier II Seed / Lots Mapping Recs

AGIIS <Department> DFrt00 ? Product ID Potash Manufacturer Part #

Product Name Potash (0-0-60) Alternate Product ID

Technology Group (None) GTIN SSI Global ID 0

Manufacturer Edit GTIN Clear SSI Global ID

Bar Code ID

Re-order Level 0 EDI Reportable

Amount on Hand 0 Inactive

Inventory Units Tns Consignment

Unit Weight 2000 Lbs/Tns On Hold

Package Units Tons Package Size Is Bulk

Shipping Manifest Pkg Qty is Always 1

Package Size 1 Tns/Tons

<Commodity Ref>

Storage Codes

<Storage Code>

Classifications

Attributes

Substitutions

Bar Codes

Product Cross References

Meppel ID

MeplnvCode

MeppAgency

Gasboy

Threshold Ratio Wizard Manufactured Formula

Save Cancel

4. When adding a Delivery Ticket, the *Tns* unit allows the number of pounds to be entered. Agvance calculates the pounds into tons, thus relieving inventory correctly. The *Tns* unit is treated as tons in all areas of Agvance.

Add a Delivery Ticket

Split Customer ID AndBa ? Acres

Customer Name Barry Anderson

Field ID ?

<Comments>

| | < Product Name > | <Gross> | <Tare> | Net | Unit | Use | Load Amount | Unit |
|---|------------------|----------|--------|-------|------|-----|-------------|------|
| 1 | Potash (0-0-60) | 5000.000 | | 2.500 | Tns | | 2.500 | Tons |