

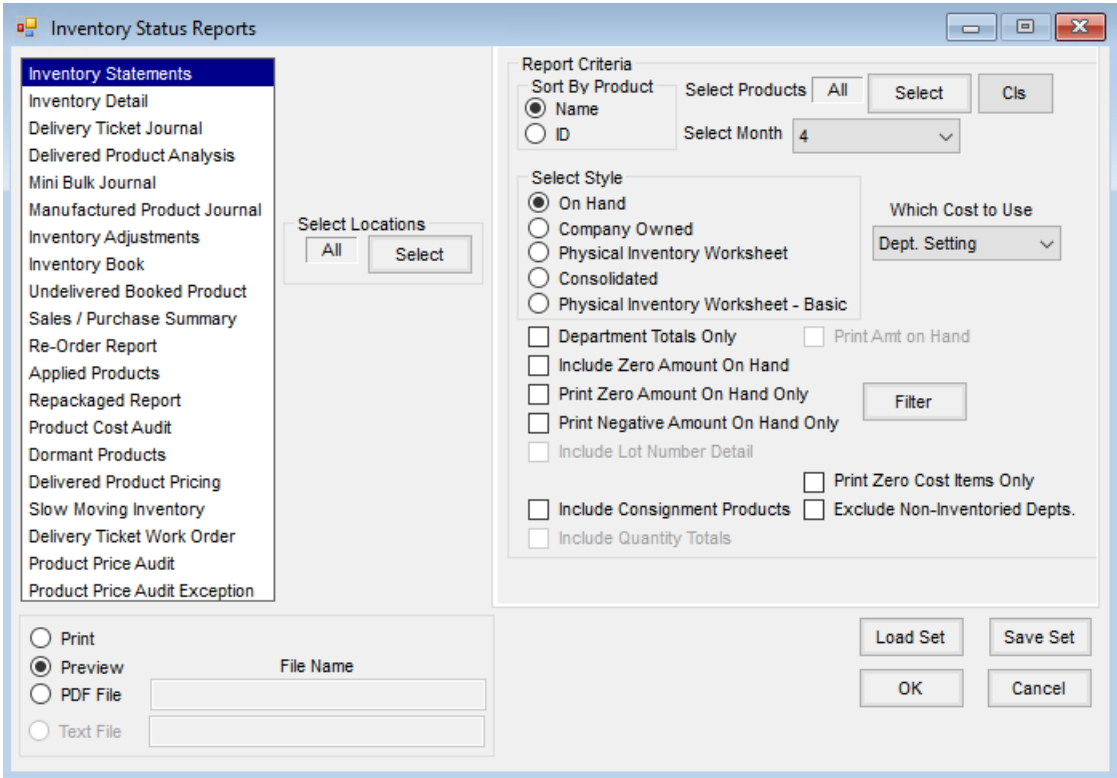
Inventory Statements

Last Modified on 03/12/2024 12:01 pm CDT

The Inventory Statements report is found at *Accounting Reports / Inventory / Inventory Status*.

On Hand

In the *Select Style* section, choose *On Hand*. Select any other additional criteria then choose to *Print*, *Preview*, or create a *PDF File* and insert a *File Name*.



The On Hand Inventory Statement shows the quantity and value of the Products that are in warehouses right now. The report shows the *On Hand* amount (which can be seen when editing a Product) in *Inventory* and *Billing Units*, the *Cost* of the Product, *Total Cost*, *List* price, *Markup*, and *Margin*. Run this report to review costs or List prices or determine if enough of a Product is available for a customer to buy.

On Hand Inventory Statement

Sorted by Name
Using Dept Level Cost
Current Month 4

Fert Additives - 00 - 00MAIN

ID	Product Name	Inventory Units Amount on Hand	Billing Units Amount on Hand	Cost	Total Cost	List	Markup	Margin
8	Agrotain Plus	65.000 Lbs	65.000 Lbs	6.000	390.000	8.69	45	31
7	Agrotain	38.000 Gal	38.000 Gal	60.000	2,280.000	72.50	21	17
26	Avail Sd	27.000 Gal	27.000 Gal	60.000	1,620.000	67.00	12	10
250000987	Avail	20.000 Qts	20.000 Qts	15.000	300.000	35.00	133	57
121	Nutrisphere Liquid	66.000 Gal	66.000 Gal	60.000	3,960.000	65.00	8	8
120	Nutrisphere	15.000 Qts	15.000 Qts	15.000	225.000	16.00	7	6
Department Total for Fert Additives - 00 - 00MAIN		231.000	231.000		8,775.000			

Company Owned

At Accounting / Accounting Reports / Inventory / Inventory Status Reports select Inventory Statements. In the Select Style section, choose Company Owned. Input Report Criteria and choose to Print, Preview, create a PDF File or a Text File and insert a File Name if selecting a pdf or text file. This report can be scheduled to run through Agvance Agent.

The screenshot shows the 'Inventory Status Reports' dialog box. On the left, a list of report types is shown, with 'Inventory Statements' selected. The main area contains several sections: 'Report Criteria' with 'Sort By Product' set to 'Name' and 'Select Products' set to 'All'; 'Select Style' with 'Company Owned' selected; 'Which Cost to Use' set to 'Dept. Setting'; and a 'Filter' button. At the bottom, there are radio buttons for 'Print', 'Preview' (selected), 'PDF File', and 'Text File', along with a 'File Name' input field. Buttons for 'Load Set', 'Save Set', 'OK', and 'Cancel' are also present.

The Company Owned Inventory Statement shows how much Product the company owns, which is not necessarily the same as the Product in the warehouse. The report starts with the *On Hand* amount of each Product, adds to the Product any unprocessed, loaded Blend and Delivery Tickets, and subtracts the amount of Product on unprocessed Purchase Receipts.

Product on unprocessed, loaded Blend and Delivery Tickets has left the warehouse, and therefore is no longer *On Hand* but, because the Customer has not been invoiced, the company still owns the Product. Product on unprocessed Purchase Receipts is sitting in the warehouse *On Hand* but has not been billed by the vendor so the Product is not yet owned. The company owned quantity times cost is the value that is posted into the Inventory Asset General Ledger Account when the Post Inventory to G/L function is performed (optionally including the value of unprocessed Purchase Receipts).

Company Owned Inventory Statement

Sorted by Name
Using Dept Level Cost

Dry Fert -00 - 00MAIN

ID	Product Name	Inv. Units	Unprocessed		Unprocessed		Billing Units	Average	Total Cost
		Amount on Hand	Delivery Tickets	Loaded Blends	Purchases	Company Owned	Cost		
Ammsulf	Ammonium Sulfate	71,923.000 Lbs	0.000	100.000	70,240.000	0.892 Tons	397.000	354.12	
Dap	Dap (18-46-00)	74,670.000 Lbs	11,400.000	134,520.000	2,500.000	109.045 Tons	367.052	40,025.19	
Filler	Dry Filler	100,000.000 Lbs	0.000	328,020.000	0.000	214.010 Tons	21.000	4,494.21	
ESN_Urea	ESN Urea (44-0-0)	571.585 Tons	0.000	0.040	0.000	571.625 Tons	420.000	240,082.50	
FabFert	Fabulous Fertilizer	1,000.000 Lbs	0.000	0.000	0.000	0.500 Tons	200.000	100.00	
GrGldFert	Green Gold Fertilizer	1,000.000 Bags	0.000	0.000	0.000	1,000.000 Bags	7.000	7,000.00	
Lime	Lime Tons	5,000.000 Tons	3,500.000	0.000	0.000	8,500.000 Tons	12.250	104,125.00	
101549871	Map (11-52-0)	69,530.000 Lbs	40.000	0.000	700.000	34.435 Tons	374.891	12,909.37	
0030201	Map (11-52-0) BULK	500.000 Lbs	0.000	200.000	0.000	0.350 Tons	525.000	183.75	
5399979999	Nitrogen Solution	44.000 Tons	0.000	0.000	0.000	44.000 Tons	250.000	11,000.00	
Potash	Potash (0-0-60)	1,540.000 Lbs	24,100.000	108,970.000	45,500.000	44.555 Tons	337.822	15,051.66	
Sulfur	Sulfur 90	700.000 Lbs	2,000.000	0.000	0.000	2,700.000 Lbs	0.700	1,890.00	
6518798465	Sulfur Granular 90% 50 Lb Ba	4,625.000 Bags	50.000	0.000	0.000	4,675.000 Bags	12.150	56,801.25	
7580000001	SuperRainbow 8-0-28	39.000 Tons	1.000	0.000	30.000	10.000 Tons	343.000	3,430.00	
Triple	Triple (0-46-0)	43,214.512 Lbs	6,000.000	150.000	0.000	24.682 Tons	335.000	8,268.47	
Urea	Urea (46-0-0)	143,199.000 Lbs	7,000.000	65,550.000	52,000.000	81.875 Tons	582.577	47,698.49	
7859999991	Urea 50-0-0	19.750 Tons	0.000	0.000	5.000	14.750 Tons	527.727	7,783.97	
Total Company Owned For Department Dry Fert -00 - 00MAIN								561,197.98	