

# Point of Sale Warnings

Last Modified on 01/07/2025 9:58 am CST

A POS (Point of Sale) warning is used to display a message as a point of sale transaction is saved. POS Warnings are triggered by a combination of Customer and/or Product Classifications. They can be set up to warn or stop a transaction and can optionally be printed. POS warnings appear when saving an Invoice, Quick Ticket, Delivery Ticket, and Blend Ticket.

POS Warnings are set up by selecting **POS Warnings** then **Add at Accounting / Setup / Preferences** on the *General* tab.

The screenshot shows the 'Edit POS Warning' dialog box. It includes the following fields and content:

- <Customer Classification>**: Must Sign
- <Product Classification>**: Chemicals for Approvers
- Warning Level**: Warn (dropdown menu)
- Message**: Must use stamp to certify this purchase is for Home, Industrial, or Structural Use. MUST INCLUDE PURCHASER'S NAME AND ADDRESS PURCHASER NOT REQUIRED TO OBTAIN OPERATOR I.D. # PURSUANT TO SEC. 6622 HU \_\_\_\_\_ IU \_\_\_\_\_ SU \_\_\_\_\_ NAME \_\_\_\_\_
- Buttons**: Save, Cancel

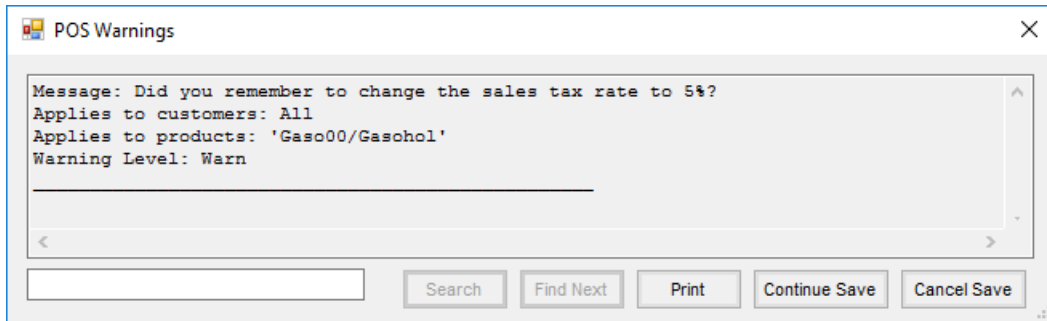
- **<Customer Classification>** – Optionally select a Customer Classification. If a Customer Classification is selected, only the Customers associated with the Classification will receive the warning. If the Classification is left blank, the warning will be triggered for any Customer when a transaction is saved. More information on Classifications can be found [here](#).
- **<Product Classification>** – Double-click to select a Product Classification. If a Product Classification is selected, only the Products associated with the Classification will receive the warning. If the Classification is left blank, the warning will be triggered for any Product when a transaction is saved. More information on Classifications can be found [here](#).
- **Warning Level** – Two options are available - *Warn* or *Stop*. If *Warn* is selected, the transaction can be saved without changes. If *Stop* is chosen, the transaction cannot be saved until corrections are made.
- **Message** – This is a user-defined message which will appear upon saving the transaction. When a POS warning is triggered, the message will include the Product(s) which generated the warning.

## Examples

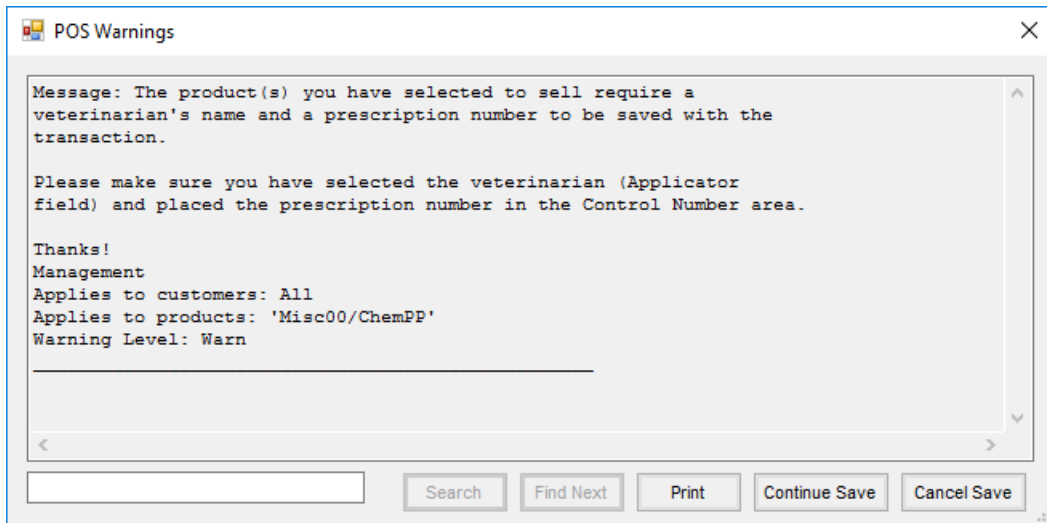
### Warning Message

The *Warn* level gives the option to **Continue Save** or **Cancel Save**. Selecting **Cancel Save** gives the ability to review the transaction or remove a Product.

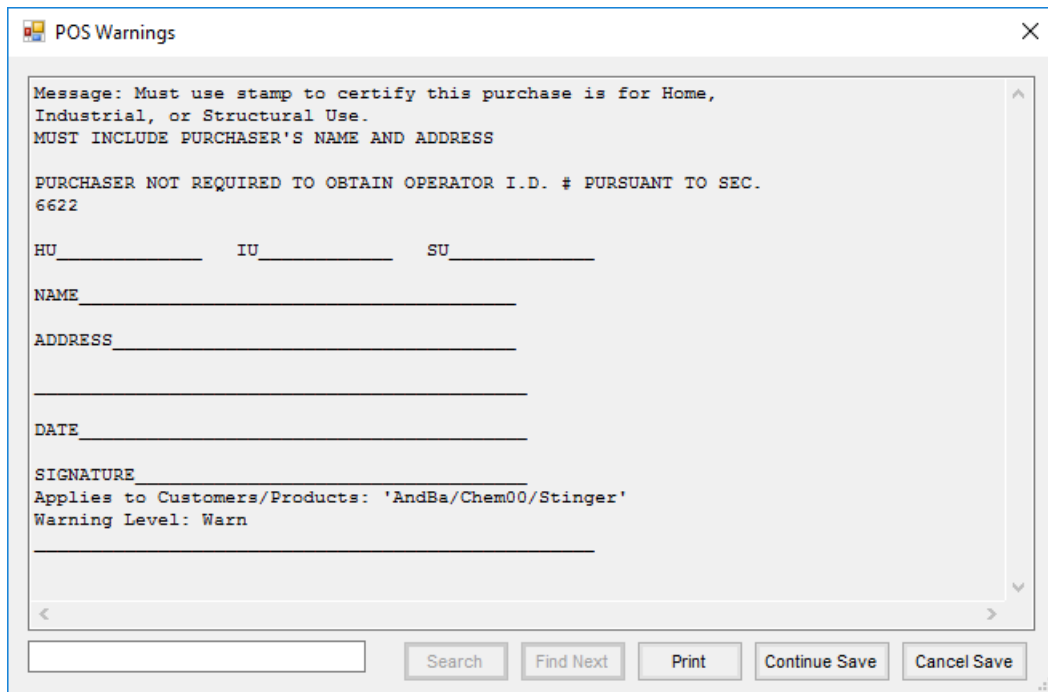
In the example below, a Product from the Gasohol Product Classification was selected to be sold to a Customer. Once the transaction was saved, the warning message below appeared to make sure the sales tax rate was changed to the reduced rate for Gasohol.



In the example below, a Product was selected from the Prescription Required for Purchase Product Classification and sold to a Customer. This warning serves as a reminder that the sale of the product referenced on the warning requires a Veterinarian and a Prescription Number for all Customers purchasing this type of product.



In the example below, a Product was selected from the Dual Use Chemical Product Classification. Dual use chemicals are chemicals which can be used for both ag and non-ag use. This warning was designed to work with the Non Ag Use Customer Classification. These Customers are required to state the use of the chemical and sign off on the purchase. As the transaction is saved for the Customer, the message below appears. The warning message can be printed for the Customer to fill out and sign. This option gives the company a way to indicate that a use type, name, address, and signature are needed to complete the sale and also provides a way to print the information as the transaction is saved.



## Stop Sale Message

The *Stop* warning level will stop the transaction from being saved with the current combination of Customer and Product selected. Select **Print** to print the warning or choose **OK**. If the **OK** button is selected, the program returns to the transaction.

In the example below, a Product was selected for a Customer who is not allowed to purchase these types of products. The warning message indicates the Products referenced on the warning are ag use Products and the Customer selected is not allowed to purchase these. Once **OK** is selected, the warning closes to return to the transaction to remove the Product. Once removed, the transaction can be saved.

