

Add Invoice

Last Modified on 11/06/2024 8:08 am CST

The same invoicing function is used whether importing tickets (Delivery, Blend, or Energy) or invoicing directly. The method by which the *Invoicing* screen is reached may vary. After selecting the **Invoice** button (or go to *A/R / Invoice* and choose **Add**), the *Customer/Field Selection* screen appears. The method to process the next Invoice can then be selected.

There is a preference on the *Invoice Printout* tab at *Setup / Location Preferences* of Agvance Accounting that controls whether or not the Salesperson's ID prints on an Invoice.

Note: Be sure any spaces are removed from the beginning of the Customer's federal permit on the *Customer Profile* tab at *File / Open / Customers* to ensure the Invoice can be saved as expected.

For the same price to default for all customers on an Invoice, change the *Default Price To* preference to *Same at Accounting / Setup / Location Preferences*. After changing this preference, editing the price for one Customer on an Invoice will change the price for all Customers.

Invoice

The screenshot shows the 'Add Invoice #1200887 Customer (239873) 1 of 1' window. It features several tabs: Invoice, Analysis, Tax, Additional Info, Source Tickets, Booking Recap, and MFT Details. The 'Invoice' tab is active, displaying a form with the following fields:

- Split ID:** 239873
- Customer:** Larry Baker
- Field ID:** ?
- Tickets:** (empty)
- Comments:** (empty)
- Grain Balances:** Regular (0.00), PrePay (2225.13), UAC (0.00), Credit Limit (25000)
- Invoice Date:** 08/02/2023
- Due Date:** 09/15/2023
- Price By:** Products
- Price Default:** Individual
- Terms:** N15

Below the form is a table of products:

	<Product Name>	Quantity	Inv U	Level	Status	<Unit \$>	Bill U	Total	Split	<%>	Your Share	Tax	Dept ID	Prod I
1	Dap (18-46-00)	6000.000	Lbs	View		411.37	Tons	1234.11	1	100.0000	1234.11	<input checked="" type="checkbox"/>	DFrt00	Dap
2	Potash (0-0-60)	3000.000	Lbs	View		375.00	Tons	562.50	1	100.0000	562.50	<input checked="" type="checkbox"/>	DFrt00	Potash
3	Bicep II Magnum	10.000	Gal	List		49.80	Gal	498.00	1	100.0000	498.00	<input type="checkbox"/>	Chem...	Bicepl

At the bottom, there are buttons for 'Extra Charges', 'Discount Programs', 'Manuf Billing', 'Apply Rollups', and 'Apply To All Customers'. A summary box shows:

- Subtotal: 2294.61
- Prepay \$ Used: 0.00
- Sales Tax: 112.29
- Amount Due: 2406.90

Buttons for 'Print Method' (1. No Roll up), 'Preview', 'Cancel', '<Back', 'Next>', and 'Save' are also present.

- **Split** – This allows any predefined splits that might have been set at the *Customer Selection* screen or Field file

to be viewed. In a split situation, the first customer (usually the grower) is displayed on the opening screen.

- **Customer ID** – The Customer ID for the Customer displays along with the *Regular*, *PrePay*, and *Unapplied Cash Balances*, and *Credit Limit* from the Customer file. To view another customer in the split, expand the *Customer ID* menu and choose the ID of the Customer to be viewed or select **Next** at the bottom of the screen.

Information from the Customer file may be viewed by selecting the **Question Mark** icon to the right of the ID.

- **Grain Balances** – This displays the Customer's Grain Balances.
- **Field ID** – If billing by Field, the *Field ID* is filled out and Field detail can be accessed by selecting the **Question Mark** icon.
- **Tickets** – When importing Delivery Tickets, Blend Tickets, or Energy Tickets, this area is filled out automatically. If tickets are not being imported, any control numbers could be keyed here for a cross reference.
- **Comments** – Key in any comments to be conveyed to the Customer(s). By selecting the chevron at the end of the *Comments* field, saved comments may be selected. To add a new comment to the list of saved comments, double-click the <*Comments*> label.
- **Invoice Date** – This date defaults based on settings at *Setup / Location Preferences (Previous Entry or System Date)*. If billing from Delivery or Blend Tickets, the date can optionally default to the *Ordered or Loaded Date* from the ticket.
- **Due Date** – The ultimate date the bill is due is displayed here. This may also be defaulted based on settings found at *Setup / Location Preferences*. The aging of the Customer account can be based on either the *Due Date* or the *Invoice Date*.
- **Price By** – Related only to fertilizer Invoices, indicate whether to price (and display) each product separately or show and price by analysis on the Invoice. The default is set at *Setup / Location Preferences* with options being *Products* (show all the individual items), *Analysis (Lbs/a)*, or *Analysis (%)*.
- **Price Default** – Only applicable in split situations, this *Same* or *Individual* setting determines how the editing of prices on one customer affects the others in the divide. With *Same*, any editing of *Unit \$* causes all customers' prices to be changed to the new price. With *Individual* selected, a change to a price affects only that customer's Invoice.

Note: If the Invoice uses Prepay or Bookings, the *Price Default* is set to *Individual* and cannot be changed.

- **Terms** – Discount options are defined at *Hub / Setup / Payment Terms* where flat rate or graduated tables, either based on percentage or volume, are created. Discounts expire in either a certain number of days (from the Invoice Date) or by a particular date. Choose from all discounts available or *None*. The default discount for the *Invoice* screen can be set at *Accounting / Setup / Location Preferences*. Default terms can also be set by customer at *File / Open / Customer* on the *Miscellaneous Infotab* which overrides the Invoice preference default.
 - The **Ellipsis** icon to the left of the Terms displays the discount for the selected customer so the effect of the payment term can be viewed before printing the Invoice.

- Selecting **A** next to the **Ellipsis** icon applies the terms of the customer being viewed to all customers in the split.
- **Product/Pricing Grid** – If invoicing from Delivery, Blend, or Energy Tickets, this grid has the items entered from the imported documents.
- **Product Name** – To add to the grid (or select all the products if direct invoicing), double-click the column heading and select the items at the *Select Products* screen.
- **Quantity** – The quantity may be set at the *Select Products* screen or may be entered here. This quantity is always in Inventory Units as defined at the product's *Profile* screen.
- **Unit** – Displayed automatically, these are the Inventory Units from the product's *Profile* screen.
- **Level**– This displays automatically based on several variables. Below are the options in the order they are defaulted.

Note: When viewing the *Booking Detail* screen after selecting under the *Level* column on a line item, some Bookings show in red font and some show in bright green font. Bookings with an *Expiration Date* which has passed or a *Starting Date* in the future will display in red. Bookings attached to a Grain Sales Contract will display in bright green. These Bookings may still be selected and used. Normal Booking rules apply. The color display serves as a visual reminder.

- **Quote** – If invoicing from a Blend Ticket with quoted prices, the prices are brought forward and the *Quote* indicator set. If importing more than one Blend Ticket (or a Blend Ticket with a Delivery Ticket), any quotes set are nullified.
- **Book** – If the program finds that this Customer booked the product, then *Book* is displayed in the *Level* column and the *Unit \$* is set accordingly. In addition, if the product was also prepaid, then *Paid* shows in the *Status* column.
- **View** – This displays if there is a Booking for the product but not enough to cover this quantity or if more than one Booking for this product exists. Select *View* and the *Booking Detail for Line Item* screen displays.
- **Price Level** – If none of the above apply, the Customer profile is checked for special pricing levels. If a special price level applies to this product, the label for the appropriate level defaults (L1, L2, etc.).
- **List** – If none of the above options are invoked, then list price defaults.
- **Status** – If the item has been prepaid, *Paid* is noted in this area. This area can also note *Book*, *DwnPmt*, or *Book/Paid*.
- **Unit \$** – Units default in the same order and manner as the *Level* column explained above. In addition, double-clicking here brings up the pricing levels showing the various prices and costs from which a level may be selected or type in any pricing.
- **Unit** – Automatically displayed, these are the billing units as defined at *File / Open / Product* on the *Pricing* tab.
- **Total** – The dollar extension $((Quantity / Billing Divisor) \times Unit \$)$ displays here. The *Billing Divisor* is set at *File / Open / Product* on the *Pricing* tab. This extension may be overridden by selecting (or double-clicking) on the

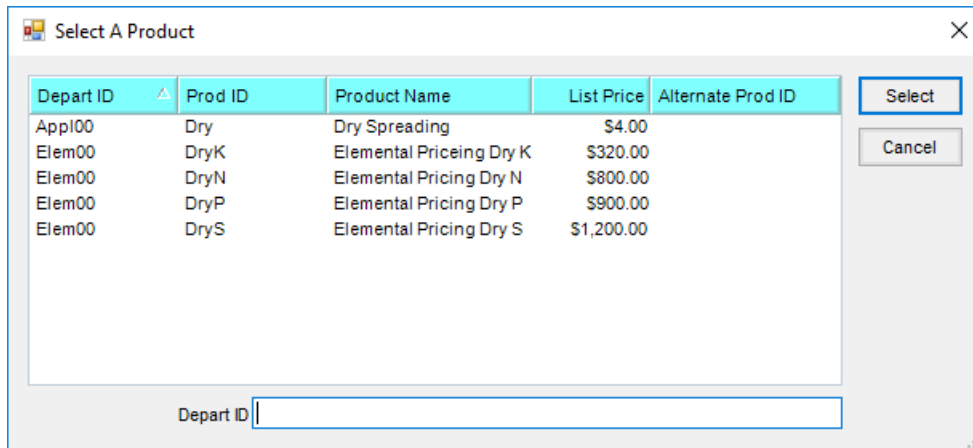
existing \$ amount and typing over it.

- **Split** – This area indicates which predefined split option applies to this line item. Predefined splits are set at *Hub / Setup / Bill Split Arrangements*. Those settings and any defined at the *Customer Selection* screen preceding the *Invoice* screen can be overridden by changing the percentage in the % column next to this one.
- **%** – In a split arrangement, this column displays the percentage for this line item that applies to the Customer displayed in the upper left portion of the screen. This is 100% if there is only one customer on the Invoice. In a split arrangement, double-clicking in this area allows modification to the split percentages to each customer for this specific line item.
- **Your Share** – In a split, this column displays the customer's portion of the line item.
- **Tax** – If the item is set to be taxed at the product's *Sales Activity* tab and if the Customer is set to *Sales Taxable* at the customer's *Miscellaneous Info* tab, then this defaults with a checkmark to indicate the line item is taxable. If the item doesn't default as sales taxable, this box may be checked manually to add sales tax to the Invoice. If the sale is tax-exempt, the tax-exempt reason may be indicated by right-clicking in this column and selecting from the list of exemption options set up at *Setup / A/R / Sales Tax Exemptions*.
- **Container ID** – Refillable container tracking may be done by selecting the refillable container on the Invoice. Selecting the container enters a tracking record at *Hub / Refillable Container Management*.
- **Dept ID** – The *Department ID* for the product is displayed.
- **Prod ID** – The *Product ID* is displayed.
- **Tax Exempt Reason** – If the sale is tax exempt and a reason is set on the *Miscellaneous Info* tab of the customer file at *File / Open / Customers*, then the tax-exempt reason displays in this area.
- **Prepay Amt** – This displays the amount of Prepay being used on this line item.
- **Lot #** – This displays the lot number selected at the *Product Selection* screen or the number can be selected from the drop-down menu of available lots.
- **Crop Code** – Optionally choose the arrow to display a drop-down menu of crops.
- **Container** – This is used by some companies who link invoicing information to other databases.
- **Addon Code** – Optionally add charges from Item Groups that apply to the Invoice such as motor fuel taxes. The Item Groups are set up at *Hub / Setup / Item Groups*.
- **CommCode** – This is used by some companies who link invoicing information to other databases.
- **Technology License #** – If set on the customer file, the technology license number defaults for products with a Technology Group specified.

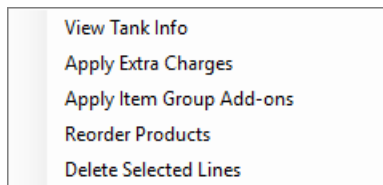
Note: The reason we do not populate the technology license number on the add of an invoice, allow typing in that field, or offer a dropdown list selection, is to allow for the situation where a user might be in the middle of adding an invoice and realize the technology license has not been entered yet. By having the program behave this way, the user can leave the invoice they are adding open and go add the tech license number in the customer file. On the save of the invoice, the technology license list will be updated so the appropriate one will be selected automatically or the user will be given a list to choose from (if there are multiple ones) that

will include the newly added license. If the program did not behave in this way, the user would be forced to cancel out of the invoice without saving, losing all the information they already set up, go add the tech license number and then start the invoice over again.

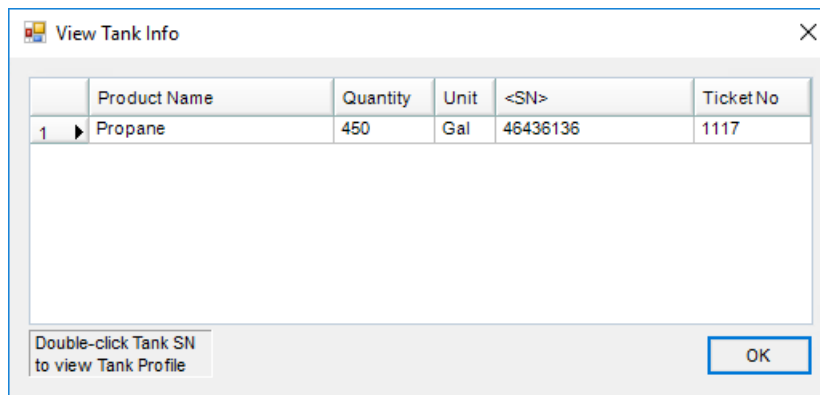
- **Direct Ship** – Items on the Invoice from a Direct Ship Purchase Order are noted with a checkmark.
- **Bin** – If the product on the Invoice is linked to a commodity in the Grain module, the bin number associated with that product displays.
- **Patronage** – This determines if this line item is eligible for Patronage.
- **Alternate ID** – If the product has an Alternate Product ID listed on the product's *Profile* tab, the Alternate ID displays in this area.
- **GB Pool** – If the Customer is pulling the product from an authorized grain bank, select the customer whose grain bank will be used.
- **Print Lineitem** – This displays the print order of the line items. If roll up kits are used, the same line number may appear on multiple lines.
- **Rollup Kit** – If a rollup kit should be included on this line item, select it here.
- **Product Search** – Search for products by Prod ID, Alt ID, or Prod Name. Searching for a product with the same characters opens the *Select A Product* window to specify which product should be included.



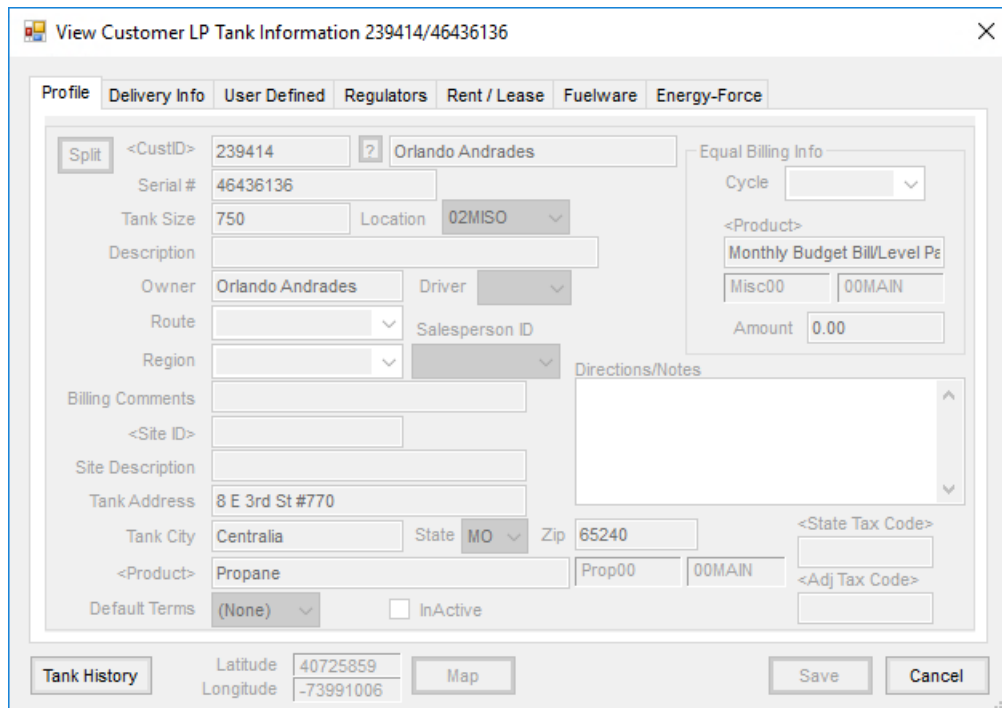
- **Bar Code** – Products with bar codes entered may be selected by bar codes. With the focus in this field, scan the bar code to select the product.
- **Right-Click Product Name** – Once the products are selected and displayed in the grid, right-clicking the Product Name brings up several menu options.



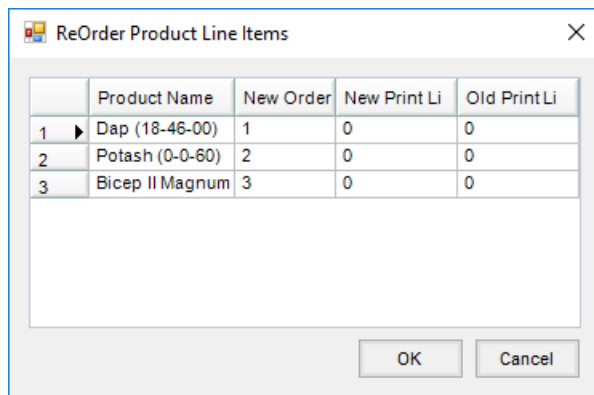
- **View Tank Info** – This option is available when importing Energy Tickets. Using this option displays the tank serial number.



Double-clicking the tank serial number displays all the tank information.



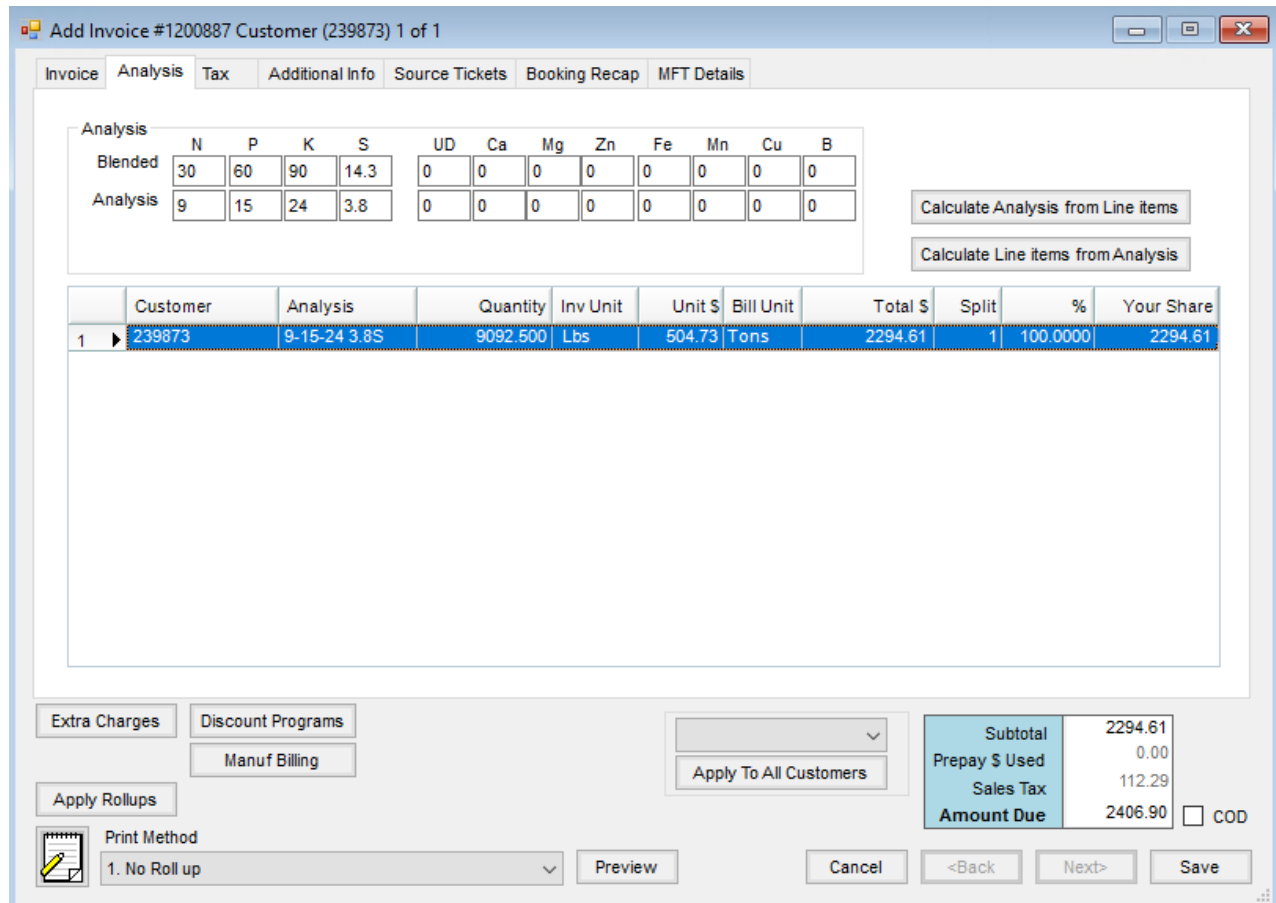
- **Apply Extra Charges** – Apply all Extra Charges applicable to the Location, Customers, and Products on the Invoice.
- **Apply Item Group Add-ons** – If any add-on products were selected on the products, using this option brings those add-on products into the Invoice.
- **Reorder Products** – Indicate in the *New Order* column the row number for each product. When invoicing by *Analysis* (either *Blended* or *Guaranteed*), the Analysis line items are listed first on the Invoice document regardless of the order selected.



- **Delete Selected Lines** - Highlight the items to be deleted at the *Invoice* screen first by selecting the line number then select this option to delete those items.

Analysis

When importing a Blend Ticket priced by one of the *Analysis* options, the analysis information is automatically populated on the *Analysis* tab. All line items that are part of the analysis are checked under the *A* column on the *Invoice* tab. This information can also be manually entered if at least one line item on the Invoice is checked as *Analysis* and by selecting one of the *Analysis* options for the *Price By* selection on the Invoicing screen, then choosing the *Analysis* tab.



- **Analysis** – Both the *Blended (Lbs/acre)* and the *Analysis (guaranteed analysis %)* will be filled in from the imported Blend Ticket. If the Invoice is priced by *Analysis (Lbs/a)*, then the Blended information defaults into the *Customer* grid. If the Invoice is priced by *Analysis (%)*, then the *Analysis* information defaults in the *Customer* grid. Editing the information in the *Analysis* section changes the *Analysis* information in the *Customer* grid only if one of the calculation options is selected. However, it does not cause any other changes to take place on the Invoice. The information can also be manually entered if at least one line item on the Invoice is marked as *Analysis* and by selecting one of the *Analysis* options in the *Price By* selection on the *Invoicing* screen then choosing the *Analysis* tab.
- **Calculate Analysis from Line Items** – If pricing changed on the line items, this recalculates the *Analysis* price based on the price of the line items.
- **Calculate Line Items from Analysis** – If the pricing changed on the *Analysis* screen, this recalculates the prices on the line items based on the new analysis price.
- **Customer Grid** – This displays the quantity breakdown by customer as it will print on the Invoice if the *Price By* preference is set to *Analysis* (either *Lbs/a* or % option). The *Analysis* information can optionally print on the Invoice document and may be manually altered. If altered, the updated information will print on the Invoice but all other items will remain the same.

Tax

If sales tax is included on an Invoice, the tax information is shown on the *Tax* tab. Each line item displays with the applicable sales tax information for the sales tax amount, the Prepay status of the sales tax, the tax rate, the state and adjustment codes, and the sales tax exemption reason. This information can vary by line if one item has a different tax rate or has prepaid sales tax while another item does not.

Add Invoice #1200887 Customer (239873) 1 of 1

Invoice Analysis Tax Additional Info Source Tickets Booking Recap MFT Details

	Product Name	Your Share	Tax	Sales Tax	Prepaid Tax	Prepay Status	Tax Rate	<State Code>	<Adj Code>	Exemption
1	Dap (18-46-00)	1234.11	<input checked="" type="checkbox"/>	77.13	0.00		6.2500	IL	None	
2	Potash (0-0-60)	562.50	<input checked="" type="checkbox"/>	35.16	0.00		6.2500	IL	None	
3	Bicep II Magnum	498.00	<input type="checkbox"/>	0.00	0.00		0.0000		None	Agricultural..

Taxable Regular Dollars
 Taxable Prepay Dollars
 Total Taxable Dollars

Calc Prepaid Tax
 Regular Tax
 Prepaid Tax
 Total Tax

<State Code>
 <Adj Code>
 Rate
 Apply to all products

Apply to all Customers
 Restore to Default Taxes
 Default to Location

Tax defaulted from Customer Codes

Extra Charges
 Discount Programs
 Manuf Billing
 Apply Rollups

Print Method
 1. No Roll up
 Preview
 Cancel
 <Back
 Next>
 Save

Subtotal	2294.61
Prepay \$ Used	0.00
Sales Tax	112.29
Amount Due	2406.90

COD

- **State Code/Adj Code/Rate/Apply to all products** – If a different *State* and *Adjustment Code* should be applied to all products on the Invoice, double-click in the *State Code* field and select the state, and then double-click in the *Adj Code* field, selecting the appropriate code. Choose **Apply to all products** and these codes are applied to all line items on the Invoice instead of having to change each line item individually. If no *State Codes/Adjustment Codes* exist, a rate may be entered in the *Rate* field and applied to all products.
- **Calc Prepaid Tax** – Sales tax may be prepaid if the original line items is prepaid. Use this to calculate the *Prepaid Tax* column in the grid, and then the Booking to be used to pay the sales tax can be selected in the *Prepay Status* column of the grid.
- **Apply to all Customers** – When the Invoice is split among multiple customers, this allows the change to be made to one and then applied to all customers.
- **Restore to Default Taxes** – If the tax amounts are changed, this returns all the taxes to the default amounts.
- **Default to Location** – This resets the *State/Adj Codes* to the ones selected at *Setup / Locations* on the *G/L Posting* tab for the current location or to the rate found at *Setup / Locations* on the *Preferences* tab if no *State/Adj Codes* are used for the current location.
- **Default to Ship To** – This resets the tax preferences to those of the *Ship To* location. This is only available when the *Use Tax Rate from Customer and Ship To* preference on the *Location Preferences* screen is not selected.

Additional Info

- Ship Via** – Enter method of shipment. These can be defined at *Hub / Setup / Ship Via*. This prints on the Delivery Ticket document when printed from the *Print Invoice Documents* screen and can optionally print on the Invoice. To enable printing the *Ship Via* on Invoices, mark the *Print Ship Via* option found at *Setup / Location Preferences*.
- Control Number** – This optional number could be used to note an internal control number (such as hand ticket numbers) associated with this sale. (Blend and Delivery Ticket numbers automatically display under *Tickets* on the Invoice). Optionally sort/search by this control number on the *Select an Invoice* screen or print this number instead of the Invoice number on statements if desired.

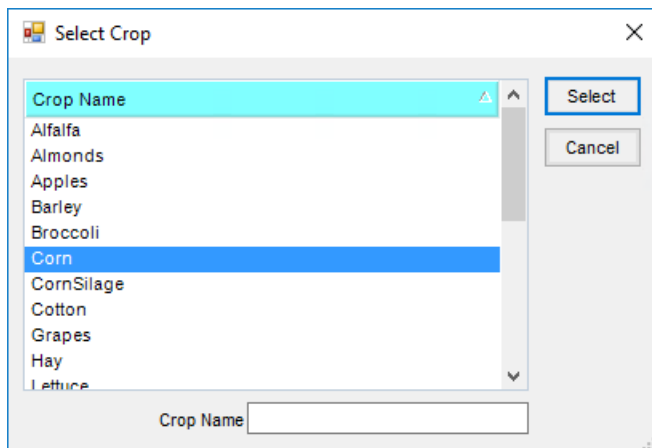
Note: Control numbers must be all numeric. No alpha characters, spaces, or other symbols may be used. Having fully numeric control allows Customer Statements to sort properly when run using the Control Number. If alpha characters, non-numeric characters, or spaces are used in the Control Number on an Invoice and a Statement or Sales report is run using Control Numbers, a pre-scan report will display detailing the Invoices that must be corrected before the report can run.
- Ship To** – Select from the Customer's *Ship to* addresses. This address then prints on the address along with a *Bill to* address if the *Bill to/Ship to Invoice* format is chosen at *Accounting / Setup / Location Preferences* on the

Invoice Printout tab.

- **Salesperson ID** – The salesperson defaults from the Customer profile. If the Invoice is a split and there is more than one salesperson, it defaults to the salesperson of the first customer. Optionally select a salesperson from those entered at *Hub / Setup / Salesperson*. This can be imported from Blend or Delivery Tickets as well.

Note: The default order is *Ship to* customer's salesperson first, then customer's. The *Bill to* salesperson is ignored in the defaulting.

- **Auth. Agt.** – If authorized agents are specified on the Customer file, the agent may be selected.
- **Territory** – The territory defaults from the Customer setup. Optional information may be entered as needed.
- **County** – This defaults from the Customer setup. If more than one customer exists, it defaults the county for the first person listed.
- **Invoiced Units** – If filled out, this is the number of units (generally acres) that prints in the upper right portion of the Invoice document. When billing by Field, it defaults to the selected Field's number of acres.
- **Customer PO #** – If the Customer provided a Purchase Order number to be included on the Invoice, enter it in this area.
- **Crop** – This defaults to the crop entered on the source ticket if importing from a Blend or Delivery Ticket. Otherwise, a crop can optionally be selected from the list maintained at *Hub / Setup / Crop Maintenance*. If a crop is selected, it prints on the Invoice in the upper right portion of the document. Select from the drop-down or double-click the label to search.



- **Federal Permit** – The non-expired federal permits of all Growers associated with this Invoice will be available in the drop-down menu. If there is only one customer with only one valid federal permit, it defaults in. If multiple federal permits exist for a customer or more than one customer in the split has a valid federal permit, no permit will default. The appropriate federal permit must be manually selected. For more information on Agvance permit rules, see *Regulation of Restricted Products* in the *Hub* section of the manual.

Note: On the bottom of the Invoice document, the selected federal permit prints if the Invoice is NOT Custom Applied. The applicator's permit number prints if it is Custom Applied.

- **Custom Applied** – Imported blends are automatically set to *Custom Applied*. Imported Delivery Tickets are

automatically set if the Delivery Ticket was marked as such. Otherwise, this indicator can be manually set. As mentioned above, this determines which federal permit (the Grower's or the Applicator's) prints on the Invoice. It is also used by the Product Rebate report found at *Reports / Accounts Receivable / Sales*.

- **Use Type** – Selection of 1 through 6 is used for reporting purposes in some states. This may be used for tonnage tax reporting or restricted use products as defined by the state. For example, a 1 is for farm use fertilizer and a 2 is for non-farm use fertilizer.
- **Additional Comments** – More notes will print on the Invoice (under the body of the Invoice on the left side).
- **Applicator ID** – Optionally select the applicator(s) from those entered at *Hub / Setup / Applicators*. If importing from multiple Blend and/or Delivery Tickets, all applicators are included with the total number of acres for each. There is a report in the *Reports / Accounts Receivable / Sales* area that summarizes acres by applicator. If importing from Energy Tickets and the drivers are set up in the Energy module, the *Driver ID* from Mobile Energy imports into this area.
- **Vehicle ID** – Optionally select a vehicle from those entered at *Hub / Setup / Vehicles*. If importing from one Blend Ticket and the vehicle was entered on the Blend Ticket, it defaults here. If importing from multiple Blend and/or Delivery Tickets, the Invoice Vehicle defaults as blank. If importing an Energy ticket and the vehicle is setup in the Energy module, the *Vehicle ID* imports into this area.
- **Acres** – Enter the number of acres for each applicator involved. This information imports from Blend Tickets and Delivery Tickets.
- **Permit #** – Some states require every sale of restricted use product have a state/local permit associated with it. This permit prints in addition to the federal permit on the Invoice, Delivery and Blend Tickets. For more information on Agvance permit rules, see *Regulation of Restricted Products* in the *Hub* section of the manual.

Source Tickets

Add Invoice #1200887 Customer (AndBa) 1 of 2

Invoice Analysis Tax Additional Info **Source Tickets** Booking Recap MFT Details

	Ticket Type	Ticket Number	Ticket Location	Ticket Date	Pickup/Delivered
1	Blend	504	00MAIN	09/23/2020	
2	Delivery	150	00MAIN	07/05/2023	Delivered

Extra Charges Discount Programs

Manuf Billing

Apply Rollups

Print Method
1. No Roll up

Apply To All Customers

Subtotal	628.97
Prepay \$ Used	0.00
Sales Tax	0.00
Amount Due	628.97

COD

Preview Cancel <Back Next> Save

If tickets were imported to create the Invoice, this tab displays information on those imported tickets: the *Ticket Type*, *Ticket Number*, *Ticket Location*, *Ticket Date*, and whether the ticket was designated as picked up or delivered.

Booking Recap

Add Invoice #1200887 Customer (AndBa) 1 of 2

Invoice Analysis Tax Additional Info Source Tickets **Booking Recap** MFT Details

	Invoice Line I	Tax	Invoice Dept ID	Invoice Prod ID	Invoice Prod Name	Invoice Cust ID	Booking Number	Booking Location	Booking
1	1	<input type="checkbox"/>	DFrt00	Urea	Urea (46-0-0)	AndBa	1200092	00MAIN	01/03/20
2	2	<input type="checkbox"/>	DFrt00	Dap	Dap (18-46-00)	WirBa	1200255	00MAIN	07/28/20
3	3	<input type="checkbox"/>	DFrt00	Potash	Potash (0-0-60)	AndBa	1200185	00MAIN	10/01/20

Extra Charges Discount Programs

Manuf Billing

Apply Rollups

Print Method
1. No Roll up

Apply To All Customers

Subtotal	628.97
Prepay \$ Used	0.00
Sales Tax	0.00
Amount Due	628.97

COD

Preview Cancel <Back Next> Save

If Bookings were selected on line items, the *Booking Recap* tab displays the Bookings used on each line item. The Invoice lines are cross referenced with the Bookings used.

If sales tax was prepaid, the Booking information pertaining to the sales tax is designated by a check in the *Tax* column.

MFT Details

The *MFT Details* tab is used by companies that have the optional module for reporting refined fuel activity to state regulators.

Add Invoice #1200887 Customer (AndBa) 1 of 2

Invoice Analysis Tax Additional Info Source Tickets Booking Recap MFT Details

Origin City Origin State Mode of transportation

Destination City Dest. State

	Product Name	Addon Code	Schedule	Tax/Fee type
1	Urea (46-0-0)			
2	Dap (18-46-00)			
3	Potash (0-0-60)			
4	Dry Spreading			
5	Bagged Fert 10-10-10			

Extra Charges Discount Programs

Manuf Billing

Apply Rollups

Print Method
1. No Roll up

Subtotal	628.97
Prepay \$ Used	0.00
Sales Tax	0.00
Amount Due	628.97

COD

- **Origin City** – Enter the city where the shipment is originating.
- **Origin State** – Select the state from the drop-down menu.
- **Destination City** – Enter the city where the product is being delivered.
- **Dest. State** – Select the state receiving the product from the drop-down menu.
- **Mode of transportation** – Select from the list. This list is from the Modes of Transportation set up in the Motor Fuel module.
- **Apply Add-Ons** – Use this to apply add-ons to the line items and the *MFT Details* tab.
- **Product Grid** – This grid displays the product from the Invoice along with the *Add-on Code*, *Schedule*, and *Tax/Fee type* for motor fuel reporting. Also included in the grid are the *Transaction Number*, *Transaction Type*, *Fill Date*, *Odometer*, *Vehicle ID*, *MI MF License Type*, *BOL Number*, and *BOL Date*. These items are populated by CFN, CTM, and Gasboy imports but may be manually entered as well. This information can be displayed on the Card Activity report found in *Accounting Reports / Accounts Receivable / A/R Status*.
- **Extra Charges** – This applies the eligible extra charges to the Invoice. Extra charges are set on the location at *Setup / Locations* on the *Preferences* tab. For extra charges to be populated onto the Invoice, the extra charge must be set up on the Customer, Product, and invoicing Location. Often these are used for fertilizer taxes that are a set percentage of dollars or quantity billed.
- **Discount Programs** – If Discount Programs are set at *A/R / Manage Discount Programs*, the discounts may

automatically be applied on the Invoice by selecting **Discount Programs**. The discounts are calculated using the products currently listed on the Invoice as well as considering past Invoices to give the appropriate discounts. The amount of the discount calculated could include discounts applicable to the past Invoice if the current Invoice puts the Customer into a new tier depending on how the Discount Program is setup. The calculation takes only the customer Invoices into consideration. If company policy is to include Bookings and Plans into the discount amounts, the discounts must then be added to the Invoice manually based on running the Program Reconciliation report.

- **Manuf Billing** – This is available when the *Allow Manufactured Inventory Detailed Billing* option is selected at *Setup / Location Preferences*. For Invoices containing manufactured products, this checks for Booking or Grain Bank available for the raw ingredient or a substitution product set on the raw ingredient. Two lines are added for raw ingredients with Booking or Grain Bank available. The first line is for a negative amount to credit the customer for the raw portion of the finished goods price. The second line is a positive amount, either charging the raw products portion to the available Booking or adding a Grain Bank line that depletes the customer's Grain Bank for the corresponding raw product's portion of the finished good.
- **Apply Rollups** – For lines with rollup kits selected, this applies the products from the rollup kit to the Invoice.
- **Apply To All Customers** – This drop-down menu allows the *CommCode* or the *Container* to be applied to all customers on split Invoices.
- **Product Quotes** – Quotes given to the customer and saved at *File / Open / Customer* by selecting the **Product Quote** icon may be called up at the *Invoicing* screen and displayed for reference. The product prices will not default based on these customer quotes, but if a quote exists for one of the selected products on the Invoice, the **Quote** icon displays red. By selecting the **Quote** icon, all quoted prices display or double-click the *Unit \$* price for the quoted product and the standard pricing options as well as quoted prices for this product to select.

Note: This Quote function should not be confused with quoted prices set in the Planning or Blending modules that default at invoicing.

Quote for AndBa Barry Anderson

Product Name	Quote Price	Quote Date	Quote #
Ammonium Sulfate	495.00	05/15/2023	7
Dap (18-46-00)	411.37	10/27/2023	74
Dicamba	.65	05/15/2023	5
Roundup Weathermax (New)...	35.00	05/15/2023	6
Super Rainbow 8-0-28	400.00	07/12/2023	73

Date: 05/15/2023
 Expire Date: 05/31/2023
 Company Wide:
 <Product>: Ammonium Sulfate
 <Price>: 495.00
 Type:
 Terms:
 <Salesperson>: TurNed

Buttons: Add, Save, Delete, Edit All, Reports, Done

- **Print Method** – Line items and/or pricing may optionally be collapsed in a variety of ways on the printed document. The line item detail in the grid remains unchanged when viewing the Invoice on the screen.
- **Preview** – This allows the line item information to be previewed prior to printing. The preview includes any selected roll up.
- **COD** – This option is available for customers required to pay at the time of the Invoice. The *Roll-Through Payment on Account* screen appears and a payment must be taken. If the payment on account is canceled, the Invoice is automatically voided. When the *Display amount due on roll thru POA window* option at *Location Preferences / Invoice* is selected, the COD roll-thru payment with the *Pay Method* set to *Credit Card* will require an additional *Pay Method* for the remainder of the payment if the initial Credit Card payment returns a message stating the Invoice can only be partially paid due to credit card limits.